



Draft Far West Regional Plan

*Central Darling Consultation Session
Monday 13 February 2017*

The Far West Region



Governance & Implementation

The final Plan can be delivered in one of two ways:

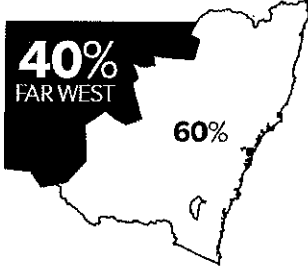
1. alongside the Far West Initiative (and embodying the Initiative's major reforms) or
2. via the establishment of a Coordination and Monitoring Committee that would deliver, coordinate and be accountable for achieving the vision and goals of the Plan.

Coordination and Monitoring Committee

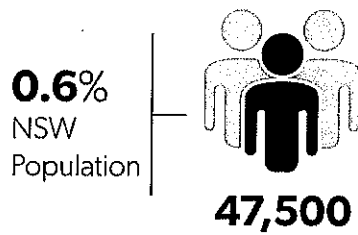
- An implementation plan will be prepared for the final Plan
- An Annual Monitoring Report will be prepared to assess progress.
- Every five years, or as necessary, the Plan will be reviewed.

Fast Facts

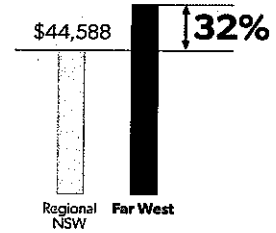
323,477 Square Kilometres
8 LGAs + Unincorporated Area



Population 2016



Economic Output per person 2011
\$58,763



Largest Gross Regional Product Contributor
2011



\$783m | **9%** Jobs

Second Largest Gross Regional Product Contributor
2011



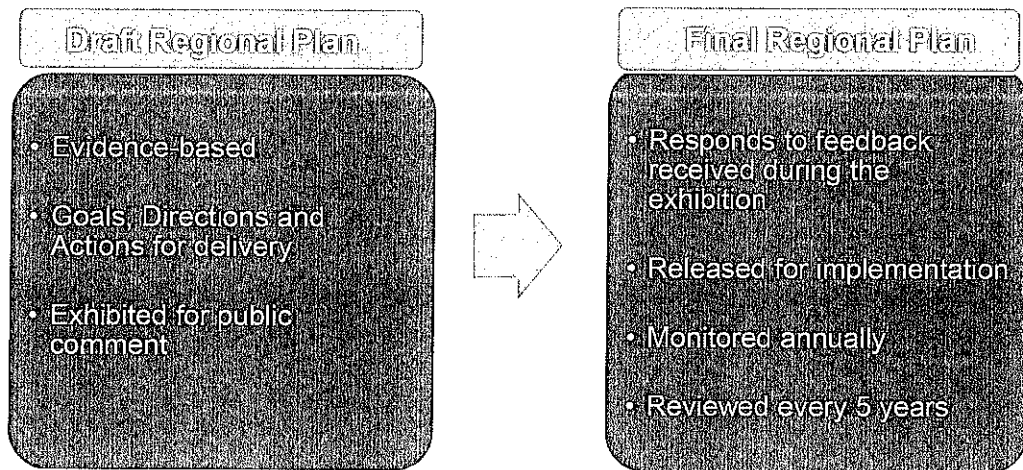
\$334m | **15%** Jobs

Major River Systems



The Barwon-Darling System
(one of the world's longest)

Planning for the Far West

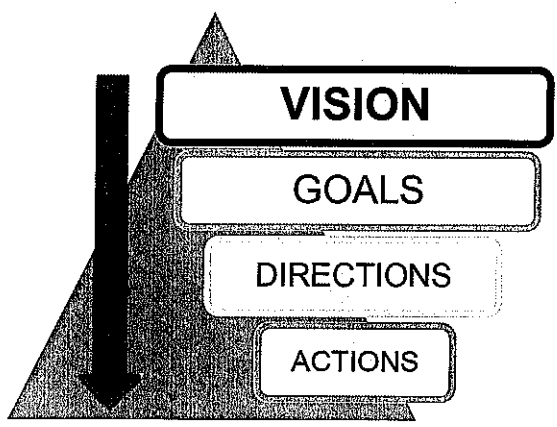


The draft Plan - Structure

Goal 1 – A diverse economy with efficient transport and infrastructure networks

Goal 2 – An exceptional and distinctive natural environment

Goal 3 – Strong and connected communities

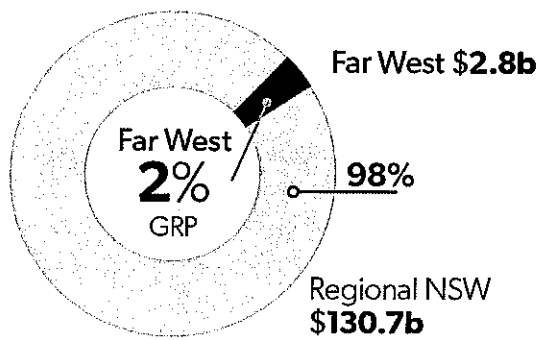


 **Vision**

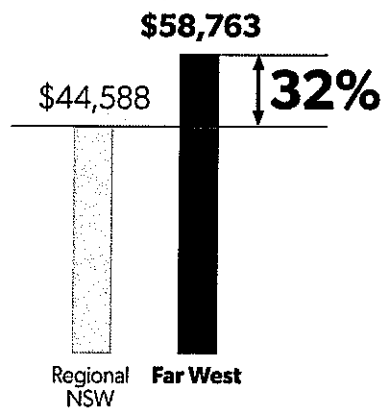
*A diverse regional economy, supported
by the right infrastructure, an
exceptional natural environment and
resilient communities.*

GOAL 1: A diverse economy with efficient transport and infrastructure networks

Economic Contribution 2011



Economic Output per person 2011



GOAL 1: A diverse economy with efficient transport and infrastructure networks

Direction 1: Grow the economic potential of the agribusiness sector

- Map important agricultural land, review local plans to remove planning barriers, minimise biosecurity risks and land use conflict.

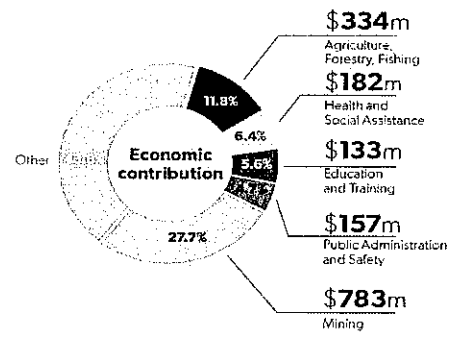
Direction 2: Increase value-adding opportunities

- Review local plans and definitions, minimise land use conflict, encourage co-location of industry and protect infrastructure investment.

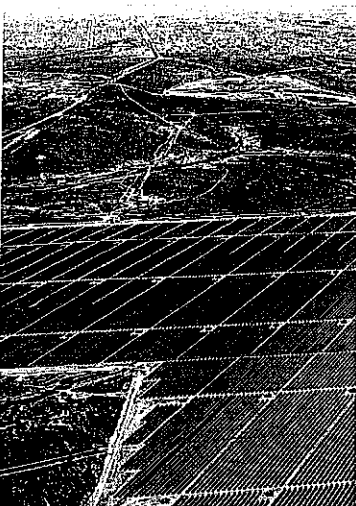
Direction 3: Sustainably manage mineral resources

- Implement a scenario planning or modelling tool, review local plans and consult the Division of Resources and Energy when assessing applications for land use changes.

Top Five Industries
by Economic Contribution
2011



GOAL 1: A diverse economy with efficient transport and infrastructure networks



Direction 4: Diversify energy supply through renewable energy generation

- Identify areas and project sites with renewable energy potential, promote best practice community engagement, promote smaller-scale renewable energy projects and identify research partnerships with universities and renewable energy companies.

Direction 5: Promote Tourism opportunities

- Align local land use and tourism strategies, prepare a tourism growth strategy, identify opportunities for tourism, identify and plan for access and infrastructure needs of the sector.

Direction 6: Improve freight transport connections

- Identify the regional freight network, investigate and prioritise projects to address impediments, protect freight and transport corridors and implement the DPE's *Planning Guideline for Major Infrastructure Corridors (2016)*.

GOAL 1: A diverse economy with efficient transport and infrastructure networks

Direction 7: Improve regional airport connections

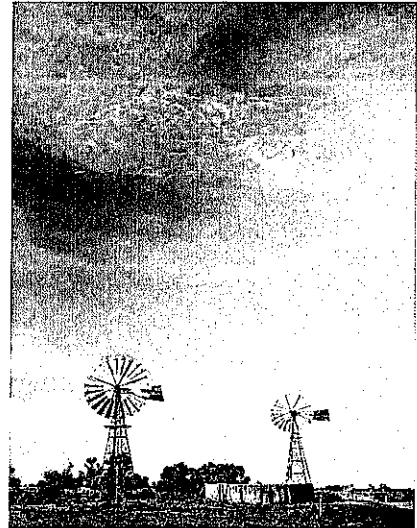
- Protect airports and airfields from the encroachment of incompatible development and support the continued allocation of regional flights into Sydney

Direction 8: Enhance access to telecommunications

- Improve access to shared telecommunication facilities at community centres and schools and establish trial sites for the use of automated freight, agricultural and passenger vehicles.

Direction 9: Sustainably manage water resources for economic opportunities

- Implement the Murray-Darling Basin Plan, finalise water resource plans, appropriately zone and protect irrigated land and investigate potential storage solutions to support agriculture.



GOAL 1: A diverse economy with efficient transport and infrastructure networks

Direction 10: Enhance productivity of employment land

- Encourage the consolidation of underutilised industrial land, minimise encroachment of incompatible land uses, and retain adequate supply of industrial land

Direction 11: Enhance the self-determination of Aboriginal communities

- Work with the Local Aboriginal Land Councils in the region to identify landholdings and map the level of constraint for each site at a strategic scale and identify priority sites that can create a pipeline of potential projects that the LALC may consider.

Direction 12: Support new planning and land management arrangements

- Prepare a local plan for the Unincorporated Area.



GOAL 2: An exceptional and distinctive natural environment



Direction 13: Protect the region's environmental assets

- Map potential HEV areas, improve the quality of, and access to HEV data, identify Travelling Stock Reserves in local land use strategies.

Direction 14: Manage and conserve water resources for the environment

- Minimise impacts of new development on water catchments and biodiversity along river corridors, prepare and implement a Murray River waterfront management strategy and retain riverfront setback provisions in local plans.

Direction 15: Increase resilience to natural hazards and climate change

- Inform land use planning and planning decisions with the best available hazard information, adopt a whole-of-government approach to information exchange, apply and communicate fine-scale climate information.

GOAL 3: Strong and connected communities

Direction 16: Manage change in the region's settlements

- Update the *Strengthening Rural Communities: Resource Kit*, undertake scenario planning and provide targeted support to improve decision-making.

Direction 17: Improve access to local health and aged care

- Investigate opportunities for establishing health precincts around existing hospitals, identify and plan for multipurpose, flexible and adaptable health infrastructure and minimise land use conflict.

Direction 18: Enhance access to skills and training

- Identify and remove barriers to the expansion of education and training facilities, identify opportunities to align training programs with skill shortages and facilitate joint venture opportunities for shared facilities.



GOAL 3: Strong and connected communities

Direction 19: Improve public and community transport services

- Investigate opportunities to improve bus operations, investigate a range of delivery models for flexible transport, prepare strategies to better link regions, towns and villages to strategic centres.

Direction 20: Manage and conserve water resources for communities

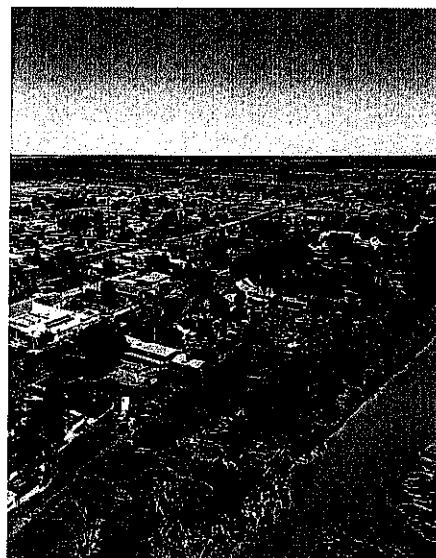
- Identify and protect the Broken Hill pipeline corridor, adopt an integrate approach to water cycle management and incorporate water sensitive urban design.

Direction 21: Increase housing choice

- Review planning controls, align infrastructure planning, identify and remove planning barriers, review Seniors Housing SEPP, locate new housing within close proximity to existing services and facilities and promote ageing in place through appropriate development controls

Direction 22: Improve the availability of affordable housing and worker accommodation options

- Prepare guidelines for seasonal and itinerant worker accommodation, promote incentives to encourage greater housing affordability, prepare local affordable housing planning guidelines, identify opportunities for social and affordable housing.



GOAL 3: Strong and connected communities



Direction 23: Manage rural residential development

- Manage land use conflict, review and identify opportunities for new rural residential development in local housing strategies.

Direction 24: Create healthy built environments

- Develop regional urban design guidelines, provide and promote accessible, adaptable and well-connected open spaces.

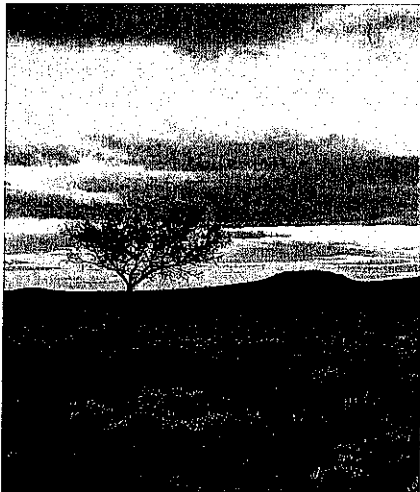
Direction 25: Protect cultural heritage

- Undertake and implement heritage studies, identify heritage values, increase the protection of heritage items in local plans and provide resources to obtain heritage advice to inform planning processes.

Direction 26: Enhance planning between cross-border communities

- Investigate opportunities to standardise development standards in NSW and Victoria, develop a cross-border land and housing monitor, make travel across the NSW-Victoria border easier and more convenient and consider cross-border strategies.

Exhibition & Consultation



Exhibition dates
13 December 2016 to 13 March 2017

Feedback

- Electronic submissions via website: <http://www.planning.nsw.gov.au/farwest>
- Written submissions sent to:
 - Department of Planning and Environment, Western Region
 - PO Box 58
 - Dubbo NSW, 2830
- Email: westernregion@planning.nsw.gov.au
- Briefings and information sessions
- Social media: Facebook and Twitter

Contact us:

188 Macquarie Street, Dubbo, NSW, 2830

Phone: (02) 6841 2180

Email: westernregion@planning.nsw.gov.au

