

**CENTRAL DARLING  
SHIRE COUNCIL**

# **CENTRAL DARLING SHIRE STREETSCAPE UPGRADES WILCANNIA, MENINDEE, IVANHOE & WHITE CLIFFS**

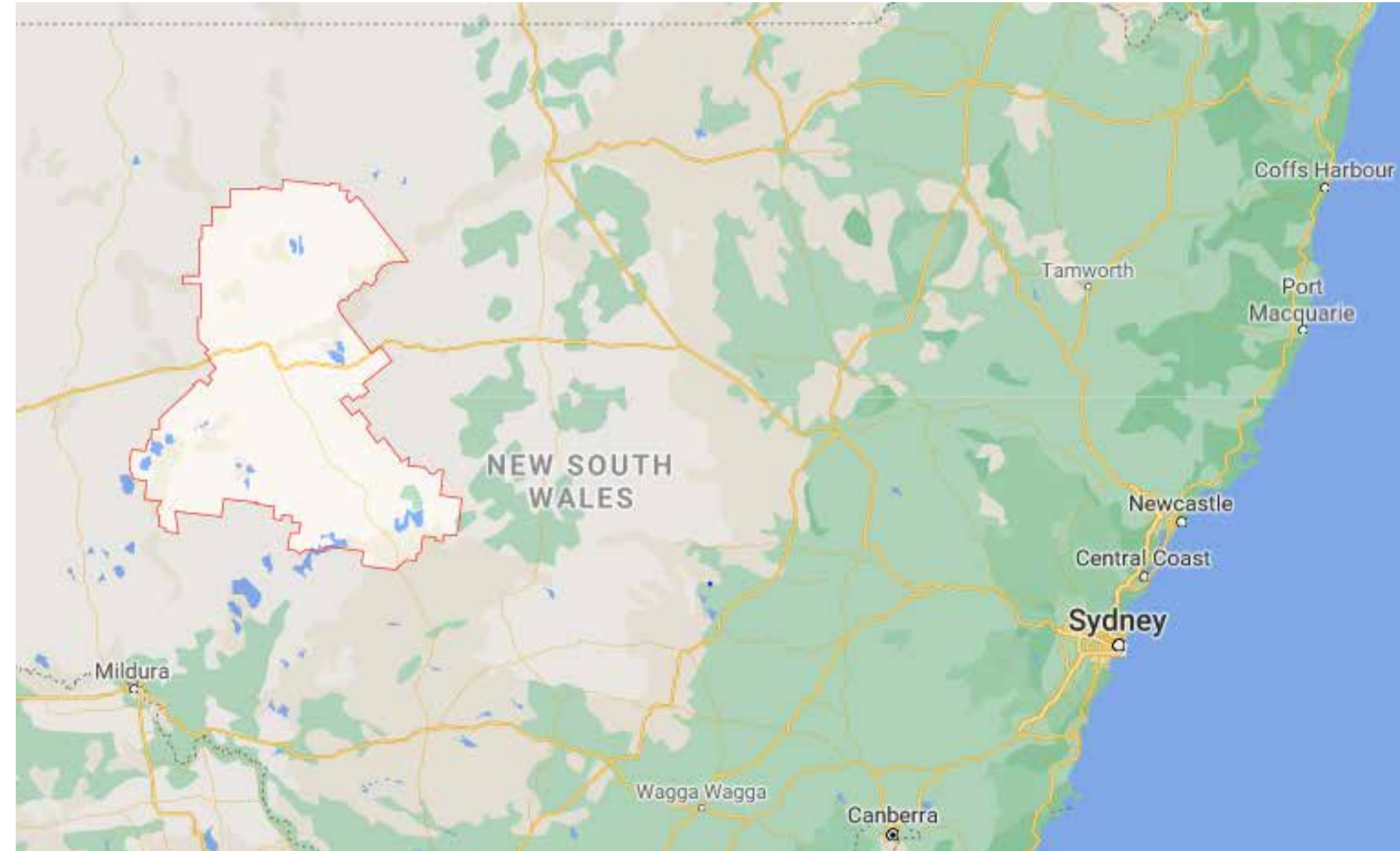


## **DOCUMENT HISTORY**

REV	DATE	AMENDMENT
A	14/04/2021	Draft for review
B	23/06/2021	Revised for review

# CENTRAL DARLING SHIRE COUNCIL - PROPOSED STREETScape UPGRADES

## STATE CONTEXT



## BACKGROUND

Central Darling Shire is the largest Shire in NSW, however has the smallest population. This, combined with its remote location and the distances between town centres creates a number of challenges. The administrative centre of the Shire, Wilcannia is located on the Darling River, 560km west of Dubbo and 714km north east of Adelaide. Menindee, with the largest population in the Shire is located 150km south west of Wilcannia, and Ivanhoe on the Cobb Highway is located 182km south east of Wilcannia. White Cliffs is around 255 km northeast of Broken Hill, and 93 km north of Wilcannia.

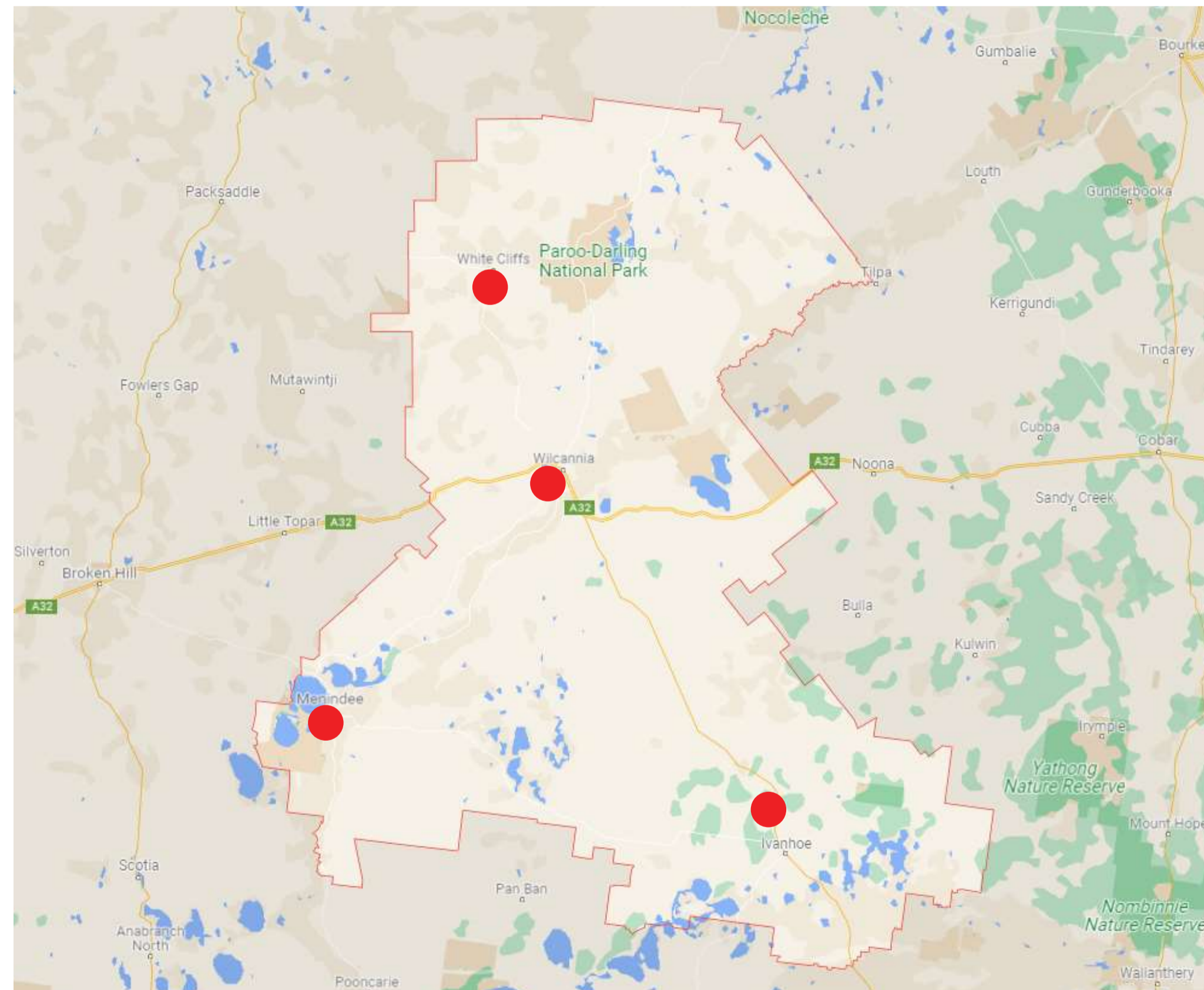
Aboriginal occupation by the Barkindji Tribe within the region can be traced back a long way, with significant sites at Lake Mungo to the south of Wilcannia and Mutawintji to the north-west. Archaeological finds within in the dry sand dunes around Menindee Lakes have provided some of the earliest remnants of human existence anywhere in the world.

Opal was first discovered in White Cliffs in the late 19th century. The town boomed through to 1900 with numerous businesses and services in town. Other towns within the region sprung up during the early 20th century functioning as stops on the extensive paddle steamer trade route along the Darling River, and later the rail line. Wilcannia was the third largest inland port in the country during its 70 year peak from 1880. With rail and river trade ceased, towns and populations within the region have declined and employment opportunities have changed and reduced. Today agriculture is the primary source of income for a number of residents, whilst opal mining continues in White Cliffs, with tourism also playing an important role.

Central Darling Shire Council is looking to revitalise town centres within the region by carrying out streetscape works to improve the atmosphere of key streets and create a more appealing environment for residents and visitors. As a starting point for discussions with local communities this preliminary streetscape masterplan has been developed to identify existing site features and opportunities for improvement. This document is a working document, which will evolve as community consultation is undertaken and Council planning policies developed.

Site visits to three of the town centres within the Shire were undertaken in November 2020, with arborist assessment of street trees carried out in January 2021. A further site inspection was undertaken in June 2021.

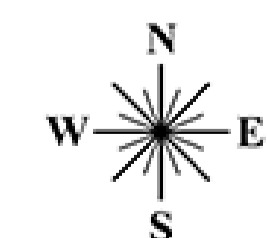
## REGIONAL CONTEXT



## KEY GOALS

The following key goals have been developed for street scape upgrade works:

- Identify opportunities for greening and increased shade coverage
- Select drought resistant species for planting
- Improve appearance of selected key streets
- Carry out footpath restoration works to improve safety and make town centres more pedestrian friendly
- Create a holistic look for each town that suits local conditions
- Develop a consistent palette of materials and street furniture that suits the character of the area
- Improve tourist appeal and encourage visitors to stop in town centres



# CENTRAL DARLING SHIRE COUNCIL - PROPOSED STREETScape UPGRADES

## WILCANNIA TOWN CENTRE - SITE ANALYSIS

### HISTORICAL BUILDINGS



Post Office



Museum



Court House



St James Anglican Church



Council Chambers



Police Station

### EXISTING STREET FURNITURE



Rubbish Bin Type 1



Rubbish Bin Type 2



Rubbish Bin Type 3



Rubbish Bin Type 4



Bench seat



Park seating



Water bubbler



Tree Guard

### KERBS AND PAVEMENTS



Sandstone Kerb in poor condition



Concrete kerb and footpath



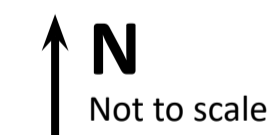
Paved footpath



Concrete footpath in turf



Grass Verge



Not to scale

Locations of site features and existing trees indicative.

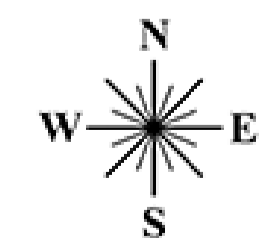
### LEGEND

Extent of study area

- 1 Court House
- 2 Police Station
- 3 Post Office
- 4 Wilcannia Athenaeum Pioneer Museum
- 5 Council Chambers
- 6 Public Swimming Pool
- 7 Future Baaka Cultural Centre
- 8 Wilcannia Club Hotel
- 9 Supermarket
- 10 St James Anglican Church
- 11 Wilcannia Central School
- 12 Memorial Park
- 13 Baker Park
- 14 Water is life wall art
- 15 Various wall art
- 16 Wilcannia College
- 17 Informative signage, seating and historical memorabilia in park
- 18 Petrol Station

- Existing concrete kerb
- Existing sandstone kerb
- Existing concrete area
- Existing paved area
- Existing concrete footpath in turf
- Existing grass verge, no kerb

- Existing rubbish bin
- Existing bench seat
- Existing water bubbler
- Existing pay phone
- Existing bus stop / shelter



**CENTRAL DARLING SHIRE COUNCIL**

**barnson**  
DESIGN . PLAN . MANAGE

# CENTRAL DARLING SHIRE COUNCIL - PROPOSED STREETScape UPGRADES

## WILCANNIA TOWN CENTRE - STREET TREES

### TREE ASSESSMENT

Urban Tree Management (UTM) assessed the existing street trees within the study area in Wilcannia and made recommendations on tree retention and removal and suitable replacement tree species. It was observed that existing footpaths are old and when a section is disrupted by tree root growth uneven edges are ground down as an ongoing practice to mitigate trip hazards.

Due to decay, pruning for overhead wires and top lopping, a number of the existing street trees in Wilcannia are recommended for removal by the arborist.

Planting new trees into the road shoulder, at approximately 3m from the edge of the kerb, with tree protection would assist with footpath upkeep by locating trees away from the footpath and kerb, while allowing each tree to develop a stronger root structure. The stronger root structure would support a larger tree canopy increasing shade coverage over the road reserve and the footpath, protecting pedestrians and prolonging pavement durability while providing unhindered pedestrian access. Trees would also guide car movements and parking, with tree pits designed to allow for runoff of rainwater and protect car doors when opening.

### EXISTING STREET TREES



Existing fig in road shoulder close to kerb.



Pruned trees under wires and un-pruned Eucalyptus in verge



Existing trees in road shoulder close to kerb.



Existing small Bottlebrush in tree guard



↑ N  
Not to scale  
Locations of site features and existing trees indicative.

### LEGEND

- - - Extent of study area
- Existing street trees in verge / pavement
- Existing trees in tree guard
- Existing street trees in road shoulder
- = Indicative location of multiple overhead power lines
- Indicative location of single overhead power lines
- Indicative location of raw water

### PROPOSED STREET TREE PALETTE



PROPOSED SMALL TREE OPTION  
*Lagerstroemia Lagerstroemia indica x fauriei 'Natchez'*  
White Crepe Myrtle



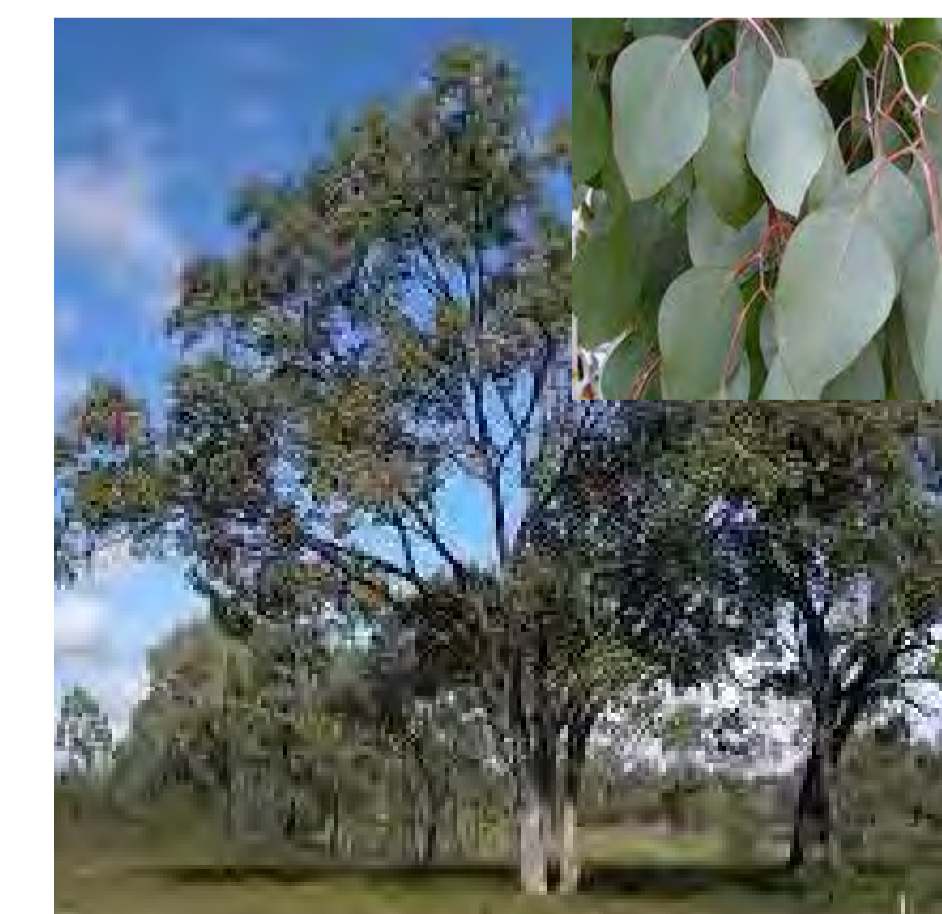
PROPOSED SMALL TREE OPTION  
*Eucalyptus woodwardii x Eucalyptus torquata*  
Eucalyptus Torwood Hybrids



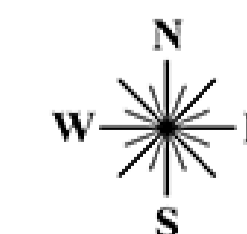
PROPOSED FEATURE TREE OPTION  
*Fraxinus angustifolia subsp. oxycarpa 'Raywoodi'*  
Claret Ash



PROPOSED LARGE TREE OPTION  
*Eucalyptus largiflorens*  
Black Box



PROPOSED LARGE TREE OPTION  
*Eucalyptus populnea*  
Bimble Box



**CENTRAL DARLING  
SHIRE COUNCIL**

**barnson**  
DESIGN . PLAN . MANAGE

# CENTRAL DARLING SHIRE COUNCIL - PROPOSED STREETScape UPGRADES

## WILCANNIA TOWN CENTRE - OPPORTUNITIES AND CONSTRAINTS

### ISSUES & CONSTRAINTS

- Locations of overhead power lines restrict proposed locations for street trees and/or limit size of trees to be planted
- Dry and hot conditions limit the types of suitable street tree species
- Location of raw water supply limits tree planting extents / locations
- New trees to be planted prior to existing trees being removed
- Tree succession plan to be developed
- Large trucks utilize the Barrier Highway / Myers Street reducing pedestrian amenity
- Parking on main streets is not formalised, with trucks taking up large areas in centre of town
- Dilapidated frontages diminish the overall town appeal
- Works to be carried out progressively, prioritised list of proposed works to be developed
- Works proposed to Meyer Street / Barrier Highway may require RMS approval

### OPPORTUNITIES

- Wide road reserves allow for additional street tree plantings
- Plant smaller tree species under existing power lines
- Plant larger tree species in the road shoulder / grass verges
- Develop parking and truck stop policy and delineate parking spaces between tree plantings
- Rationalise locations and types of street furniture
- Introduce consistent street furniture pallet
- Introduce town centre node at intersection of Myers and Reid Street, linking future cultural centre, historic Post office building and Memorial Park
- Retain / upgrade existing sandstone kerbs at intersection of Myers and Reid Streets or salvage and store for future use
- Upgrade pavement to Post Office frontages, followed by other corners of intersection
- Investigate safe pedestrian crossing / refuge island locations on Myers Street, such as at existing bus stop
- Create sense of arrival via entry features at gateway points to town
- Streamline design of Memorial Park to give a more holistic feel and encourage use by residents and visitors
- Investigate opportunities to link street footpath system to river pathways
- Consolidate and update informative signage design across town / shire and consider digital access
- Engage with local community to implement street art / public art strategy
- Preserve heritage building frontages and maintain in line with Council policy



### LEGEND

- Extent of study area
- New small tree under wires
- New large tree planting in road shoulder
- New large tree planting to grass verge
- Existing tree to be retained
- Opportunity to create town centre focal node
- Retain/upgrade existing sandstone kerb
- - - Install new/salvaged sandstone kerb
- New paved footpath, colour to compliment sandstone kerb
- New rubbish bin
- New seating
- Truck parking
- Opportunity for feature entry
- Opportunity for pedestrian refuge island /and or crossing
- ➔ Opportunity to upgrade park including;
  - Redefine spaces to create usable green space adjoining footpaths;
  - Rationalisation of signage;
  - Upgrade of furniture to match street furniture palette;
  - Rationalisation of vehicle access; and
  - Update of historical and informative signage to suit street furniture palette.
- Indicative location of overhead power lines

# CENTRAL DARLING SHIRE COUNCIL - PROPOSED STREETScape UPGRADES

## MENINDEE TOWN CENTRE - SITE ANALYSIS

### EXISTING BUILDINGS



Corner Store / Cafe



Albermarle Hotel



War Memorial



Supermarket



Post Office



Civic Hall

### EXISTING STREET FURNITURE & FEATURES



Rubbish Bin type 1



Rubbish Bin type 2



Rubbish Bin type 3



Rubbish Bin type 4



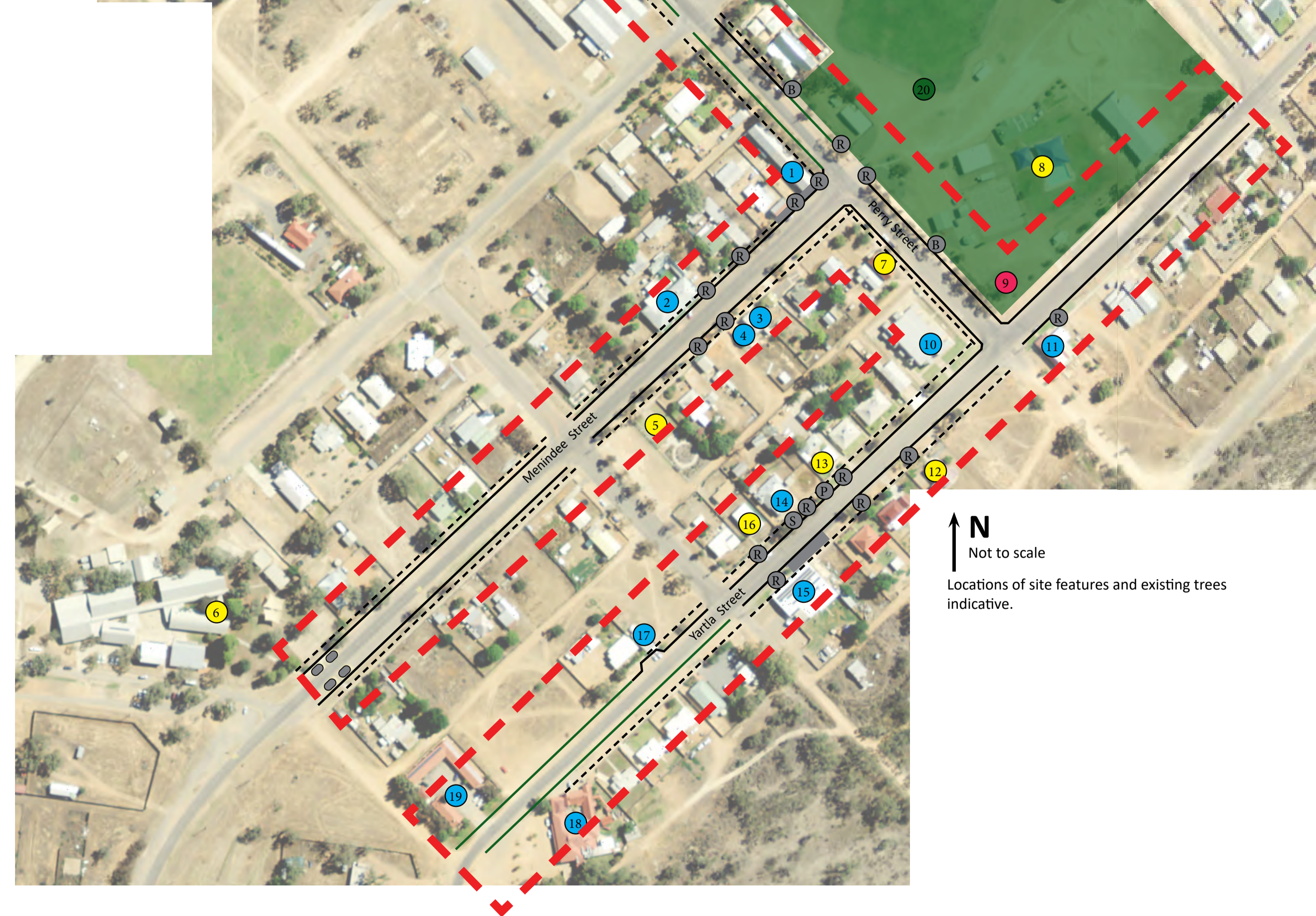
Seat type 1



Grass / gravel verge, no kerb



Concrete kerb with concrete footpath in turf



↑ N  
Not to scale  
Locations of site features and existing trees  
indicative.

### LEGEND

--- Extent of study area

- 1 Corner Store/ Cafe
- 2 Albermarle Hotel
- 3 Hair Salon
- 4 Pharmacy
- 5 War Memorial
- 6 Menindee Central School
- 7 Holy Trinity Anglican Church
- 8 Public Swimming Pool
- 9 Public Art & Seating
- 10 Civic Hall
- 11 Pizza Shop / Cafe
- 12 Saint Patrick's Catholic Church
- 13 Police Station
- 14 Post Office
- 15 Supermarket
- 16 Menindee Uniting Church
- 17 Op Shop
- 18 Maidens Hotel
- 19 Burke & Wills Motel
- 20 Burke & Wills Park

— Existing concrete kerb

█ Existing concrete area

- - - Existing concrete footpath in turf

— Existing grass / dirt verge

● Existing pedestrian refuge

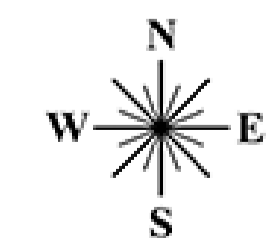
Ⓡ Existing rubbish bin

Ⓢ Existing seat

Ⓦ Existing water bubbler

Ⓟ Existing pay phone

Ⓡ Existing bus stop



# CENTRAL DARLING SHIRE COUNCIL - PROPOSED STREETScape UPGRADES

## MENINDEE TOWN CENTRE - STREET TREES

### TREE ASSESSMENT

Trees in Menindee are mostly planted within the verge or pavement and most have been subject to top lopping or some crown pruning for clearance to aerial electrical cables. In some locations new plantings in the road shoulder could be placed 3 m from the edge of kerb with protection by wheel stops. In some locations an alternating second row of smaller trees or upright trees with narrow crowns could be planted within the verge 1 m from face of kerb.

Where no aerial electrical cables are present additional trees could be planted adjacent residences and shops or in Yartla Street in the road reserve alongside the public swimming pool. Where aerial electrical cables are present in the road reserve such as Menindee Street smaller trees or trees with narrow spreading crowns, e.g. Red Capped Gum and Kurrajong, could be planted within the verge 1 m from the face of the kerb. This would allow for crown development that may not conflict with the wires or require reduced pruning, resulting in less disfigured and misshapen shaped trees and preventing premature decline from lopping wounds and predation.

### PROPOSED STREET TREE PALETTE



PROPOSED LARGE TREE OPTION  
*Pinus halepensis*  
Aleppo Pine



PROPOSED LARGE TREE OPTION  
*Eucalyptus largiflorens*  
Black Box



PROPOSED SMALL TREE OPTION  
*Eucalyptus erythrocorys*  
Red Capped Gum



PROPOSED SMALL TREE OPTION  
*Eucalyptus woodwardii* x *Eucalyptus torquata*  
Eucalyptus Torwood Hybrids



### LEGEND

- - - Extent of study area
- Existing street trees in verge / pavement
- Existing tree in road shoulder
- = Indicative location of multiple overhead power lines
- Indicative location of single overhead power lines
- Indicative location of raw water

### EXISTING STREET TREES



Existing Coral Gums at Post Office



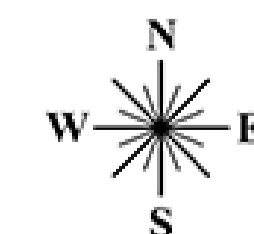
Existing trees in grass verge



Existing trees in verge



Existing Coral Gums at Post Office



**CENTRAL DARLING**  
SHIRE COUNCIL

**barnson**  
DESIGN . PLAN . MANAGE

# CENTRAL DARLING SHIRE COUNCIL - PROPOSED STREETScape UPGRADES

## MENINDEE TOWN CENTRE - OPPORTUNITIES & CONSTRAINTS

### ISSUES & CONSTRAINTS

- Locations of overhead power lines restrict proposed locations for street trees and/or limit size of trees to be planted
- Dry and hot conditions limit the types of suitable street tree species
- Location of raw water supply limits tree planting extents / locations
- New trees to be planted prior to existing trees being removed
- Tree succession plan to be developed
- Public and commercial buildings are scattered through town, meaning there is no key commercial strip
- A range of signage and street furniture is scattered around town
- Works to be carried out progressively, prioritised list of proposed works to be developed

### OPPORTUNITIES

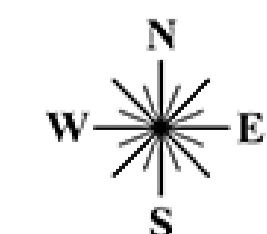
- Wide road reserves allow for additional street tree plantings and provides opportunities for double row planting
- Plant smaller tree species under existing power lines
- Plant larger tree species in the road shoulder / grass verges
- Rationalise locations and types of street furniture
- Introduce consistent street furniture pallet
- Improve visual prominence and access to covered seating at corner of Perry Street and Yartla Street to encourage use by residents and visitors
- Create sense of arrival via entry features at gateway points to town
- Update furniture and review layout under existing trees at Post Office
- Consolidate and update informative & interpretive signage design across town / shire and consider digital access



### LEGEND

- Extent of study area
- New small tree under wires
- New large tree planting in road shoulder
- New large tree planting to grass verge
- Existing tree to be retained
- New seating
- New rubbish bin
- Opportunity for feature entry
- Improve visual amenity and access to covered seating area. Review street tree and car parking arrangements
- Indicative location of overhead power lines

↑ N  
Not to scale  
Locations of site features and existing trees indicative.





# CENTRAL DARLING SHIRE COUNCIL - PROPOSED STREETScape UPGRADES

## IVANHOE TOWN CENTRE - SITE ANALYSIS

### EXISTING BUILDINGS



Ivanhoe Hotel



Historic department store



Multi Service Outlet



Post Office



Community Hall



RSL Club



Ivanhoe Health Services



Motel

### EXISTING STREET FURNITURE



Rubbish Bin Type 1



Rubbish Bin Type 2



Rubbish Bin Type 3



Painted concrete planter



Painted concrete planters



Concrete planters



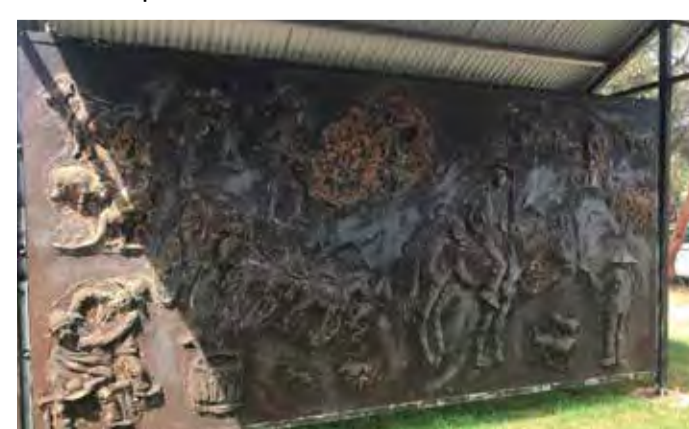
Seat type 1



Mixed signage types & Water fountain



Totem Poles & Informative signage



Sculpture wall



Seat type 2



Picnic Table Type 1



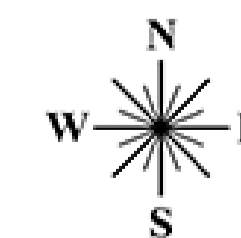
Picnic Table Type 2



Water fountain type 1

### LEGEND

- - - Extent of study area
- 1 Petrol Station / Caravan Park
- 2 Ivanhoe Hotel/Motel
- 3 Post Office
- 4 Ivanhoe Central School
- 5 Butcher
- 6 Police Station
- 7 RSL Club
- 8 Motel
- 9 B'n'B
- 10 Hospital / medical centre
- 11 Public Toilet
- 12 Sculpture / War Memorial
- 13 Informative signage, seating and Historical memorabilia in park
- 13 Totem poles
- 14 Ivanhoe Community Hall
- 15 Multi Service Outlet
- Existing concrete kerb
- Existing grass verge, no kerb
- Existing paved area
- - - Existing concrete footpath in turf
- R Rubbish bin
- S Seat
- W Water fountain
- T Picnic table
- P Pay phone
- B Bus stop / shelter
- C Raised concrete planter
- R&A Raised concrete planter with artwork



Not to scale

Locations of site features and existing trees indicative.



# CENTRAL DARLING SHIRE COUNCIL - PROPOSED STREETScape UPGRADES

## IVANHOE TOWN CENTRE - STREET TREES

### TREE ASSESSMENT

Electrical poles are located on the north side of road, in a very wide road reserve/verge. To the north of town two informal rows of trees are located in the verge, with a double row outside hospital. Space is available for more plantings, including double rows of trees.

From Bourke Street east, kerb and gutter commence. The road reserve remains very wide, with an island of trees close to the property boundary surrounded by a gravel access road. A second fragmented line of small trees is located behind the kerb. Opposite to Kennedy Street there are dead Eucalyptus sp. and hollow Peppercorn. Wires are delivered to residences from north side of street result in good scope to plant in the road reserve / verge.

The service road at Kennedy Street is wide. Planting could be enhanced behind kerb and at 2 m from south side (street side) of access road to provide a continuous second row of trees surrounded by wheel stops for protection.

On the south side (opposite) Peppercorn Trees are hollow and decayed and are likely structurally deteriorated in the area of footpath east from the RSL to the Ivanhoe Hotel.

From Cook Street to Behring Street trees plantings are fragmented and trees have been top lopped under wires. Smaller trees set back 1 m from kerb and a second row 3 m from the foot path and alternating would provide greater coverage and shade. On the opposite side of the road the opportunity exists to plant in road shoulder with trees protected by wheel stops. A new second alternating row of trees 1 m behind kerb could be planted from Balranald Road to opposite Behring Street.



### LEGEND

- - - Extent of study area
- Existing street trees in verge / pavement
- Existing street trees in road shoulder
- Indicative location of multiple overhead power lines
- Indicative location of single overhead power lines
- Indicative location of raw water

### PROPOSED STREET TREE PALETTE



PROPOSED FEATURE TREE OPTION  
*Fraxinus angustifolia* subsp. *oxycarpa* 'Raywoodi'  
Claret Ash



PROPOSED SMALL TREE OPTION  
*Eucalyptus erythrocorys*  
Red Capped Gum



PROPOSED LARGE TREE OPTION  
*Eucalyptus populnea*  
Bimble Box



PROPOSED NARROW / SMALL TREE OPTION  
*Brachychiton populneus*  
Kurrajong

### EXISTING STREET TREES



Existing Callistemon in planters under Peppercorn trees



Existing Athel Pine at gravel service road



Existing row of trees against kerb at service road



Existing garden bed at community hall



Typical streetscape with wide road shoulder and verge

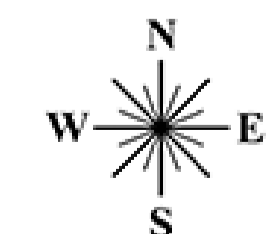


Space available for additional planting at service / access road



Not to scale

Locations of site features and existing trees indicative.



# CENTRAL DARLING SHIRE COUNCIL - PROPOSED STREETScape UPGRADES

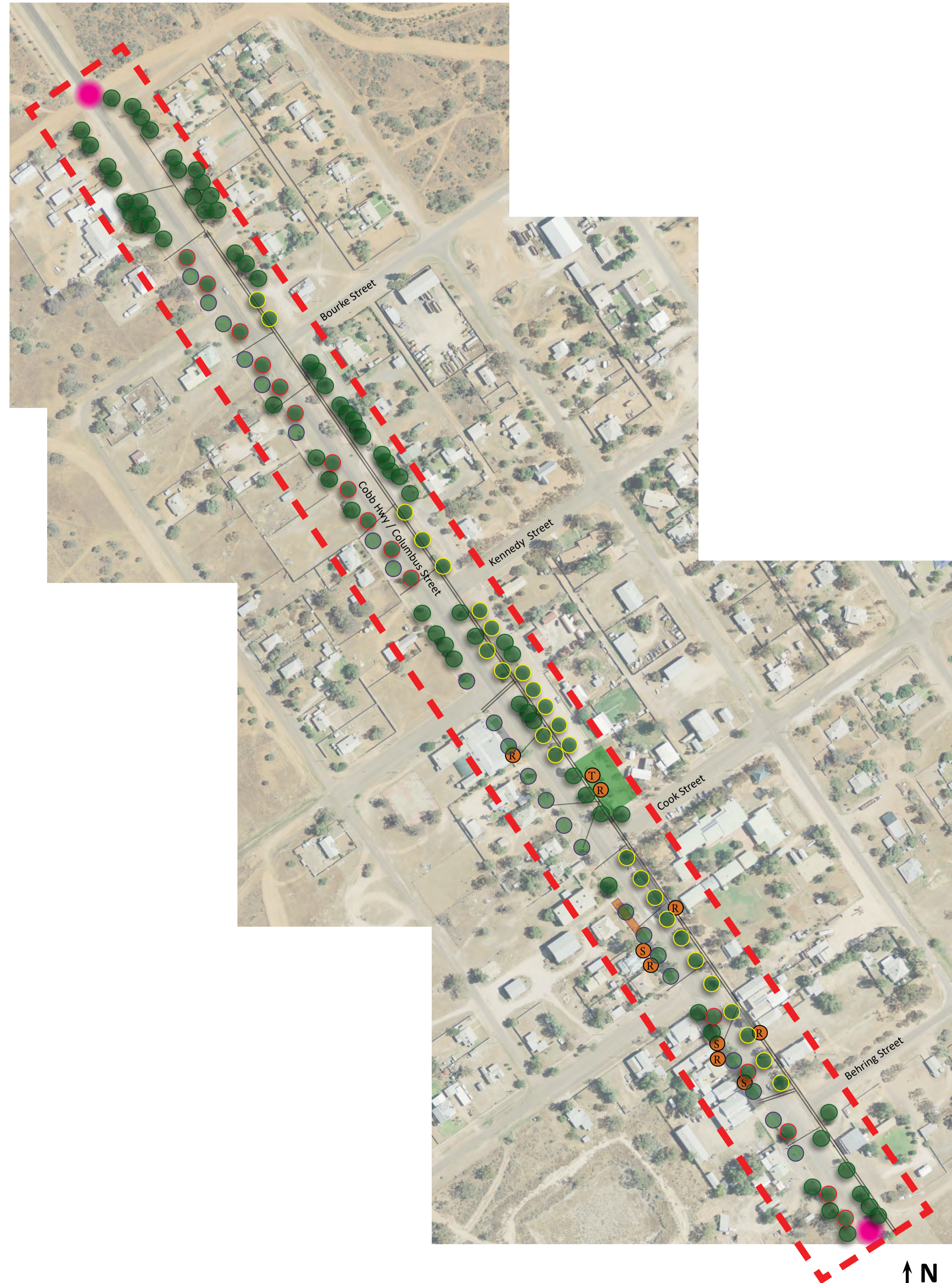
## IVANHOE TOWN CENTRE - OPPORTUNITIES & CONSTRAINTS

### ISSUES & CONSTRAINTS

- Locations of overhead power lines restrict proposed locations for street trees and/or limit size of trees to be planted
- Dry and hot conditions limit the types of suitable street tree species
- Location of raw water supply limits tree planting extents / locations
- Street furniture, concrete planters and garden beds are scattered on footpath, resulting in congested and disjointed look
- Town contains areas of disjointed paving which require maintenance and or repair
- Funding for works TBC, prioritised list required
- Works proposed to Columbus Street / Cobb Highway may require RMS approval

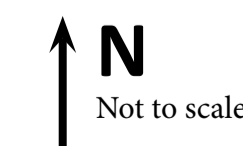
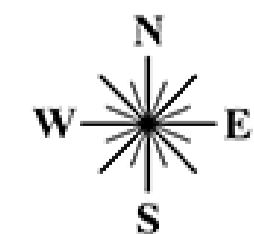
### OPPORTUNITIES

- Wide road reserves and footpaths allow for a double row of additional street tree plantings
- Select smaller tree species for use under power lines and in the town centre to give unified look
- Select larger tree species for use in the road reserve / grass verges to give unified look
- Rationalise locations, numbers and types of street furniture
- Introduce consistent street furniture pallet throughout town
- Remove concrete planters and streamline footpath, garden bed and street furniture layout
- Extend existing paved footpath area to link to pedestrian crossing at Post Office
- Instigate footpath maintenance / replacement programme to address areas of aging paved footpath
- Create sense of arrival via entry features at gateway points to town
- Streamline design of gravel access road and green space adjoining sculpture wall to provide attractive place for residents and visitors to stop
- Consolidated informative & interpretive signage design across town / shire and consider digital access



### LEGEND

- Extent of study area
- New small tree under wires
- New large tree planting in road shoulder
- New large tree planting to grass verge
- Existing tree to be retained
- New paved footpath, colour to match or compliment existing
- Existing paved footpath to be maintained / progressively upgraded
- New rubbish bin
- New seating
- New tables and seating
- Opportunity for feature entry
- Upgrade public open space including;
  - Review layout to create more user friendly spaces and increase kerb appeal;
  - Upgrade furniture in line with street furniture palette;
  - Rationalise and update informative and historical signage;
  - Strategically locate new tree plantings for maximum shade cover; and
  - Review vehicle access and surrounding parking areas in adjoining service road.
- Indicative location of overhead power lines



Not to scale

Locations of site features and existing trees indicative.



# CENTRAL DARLING SHIRE COUNCIL - PROPOSED STREETScape UPGRADES

## WHITE CLIFFS TOWN CENTRE - SITE ANALYSIS

### BUILDINGS AND FEATURES



National Park Visitor Centre

Town Hall

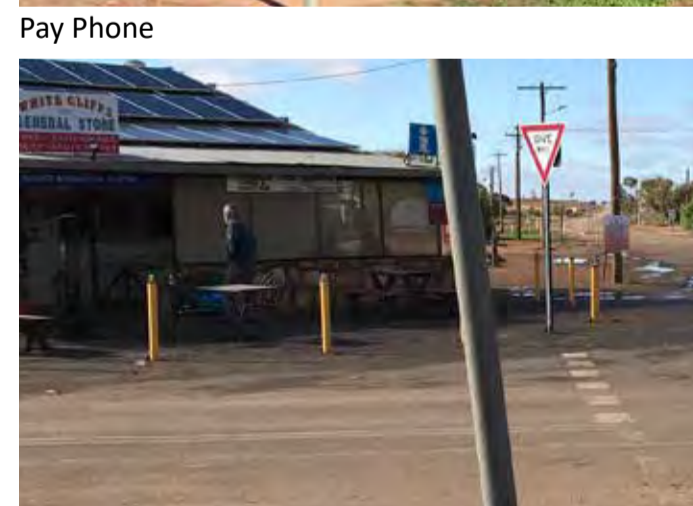
Anzac Memorial

White Cliffs Health Services

White Cliffs Public School

General Store & Hotel

### EXISTING STREET FURNITURE & FEATURES



Rubbish Bin & Timber bollards

Timber Seat

Pay Phone

Wheel Stops

Bollard Type 2

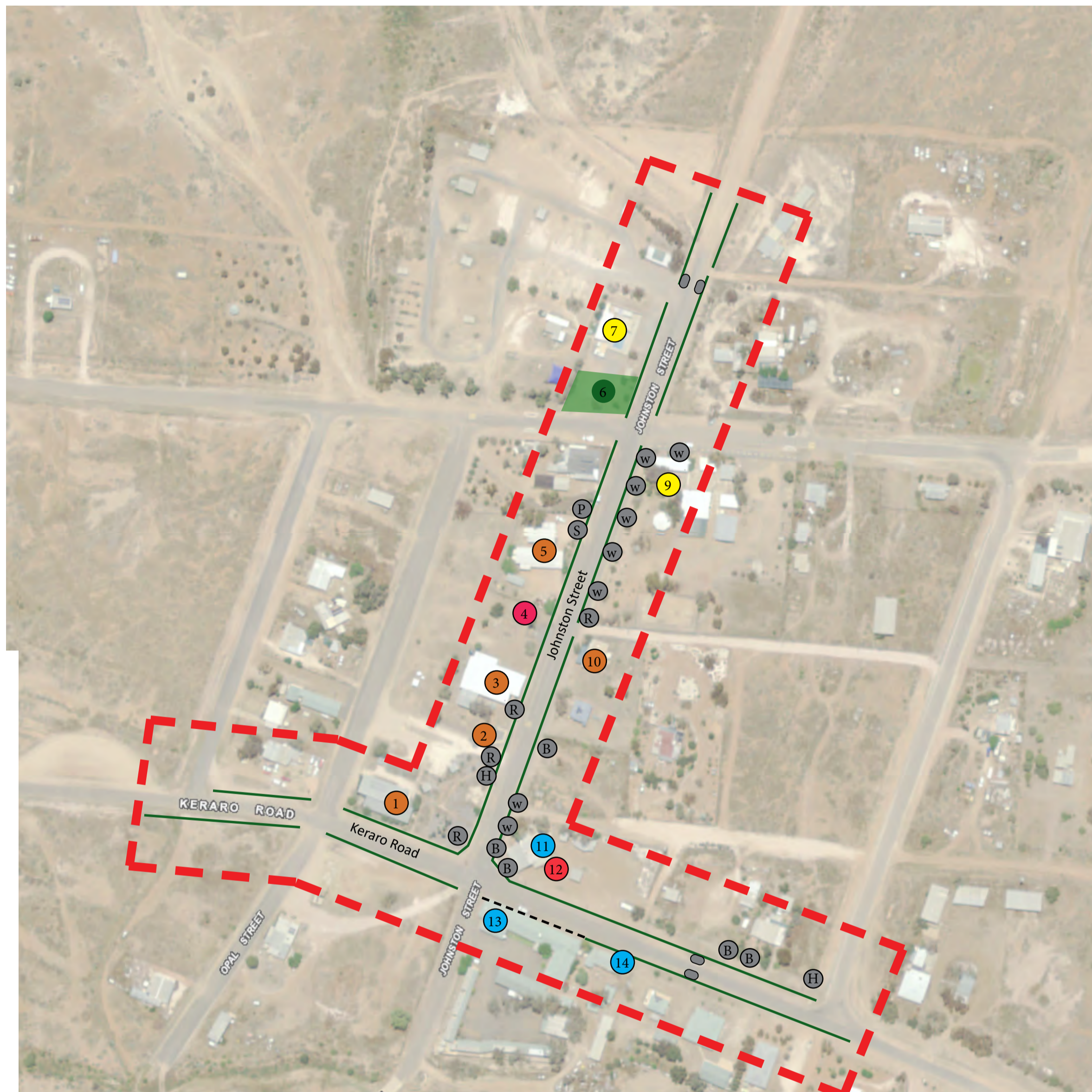
Bollard Type 3

Wall artwork

Informative signage



Grass / gravel verges with no kerb

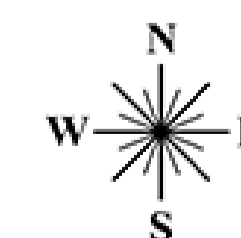


N  
Not to scale

Locations of site features and existing trees indicative.

### LEGEND

- - - Extent of study area
- ① National Park Visitor Centre
- ② Public Toilets
- ③ Town Hall
- ④ Anzac Memorial
- ⑤ White Cliffs Health Services
- ⑥ Opal Pioneers Reserve
- ⑦ Public Swimming Pool
- ⑧ White Cliffs Opal Pioneer Caravan Park
- ⑨ White Cliffs Public School
- ⑩ Country Womens Association
- ⑪ White Cliffs General Store & petrol
- ⑫ Wall Art
- ⑬ White Cliffs Hotel
- ⑭ Petrol point
- Existing grass / gravel verge, no kerb
- - - Concrete edge to Hotel acting as kerb
- Existing signage blister in road
- Ⓡ Existing rubbish bin
- Ⓢ Existing bench seat
- Ⓟ Existing bollards
- Ⓟ Existing pay phone
- Ⓢ Existing wheel stops
- Ⓡ Existing historical signage



# CENTRAL DARLING SHIRE COUNCIL - PROPOSED STREETScape UPGRADES

## WHITE CLIFFS TOWN CENTRE - STREET TREES

### TREE ASSESSMENT

Electrical poles and overhead wires are located on the north side of Keraro Road and on the western side of Johnston Street. In both cases the road reserve/verge is wide, with no formal kerb and gutter system. Similarly footpaths are not formalised in the town.

There are no existing street trees in White Cliffs. Peppercorn trees planted on Keraro Road and Eucalyptus and Acacia trees within the CWA property boundary and adjoining the old post office building provide amenity and contribute to the streetscape.

Given the wide streets and lack of infrastructure opportunities exist on both sides of the street to introduce tree planting in blisters within the road shoulder. As per other town centres it is recommended that trees be protected by wheel stops.

### EXISTING TREES



Schinus molle - Peppercorn Tree



Eucalyptus sp.



Acacia sp.



Not to scale

Locations of site features and existing trees indicative.

### LEGEND

- - - Extent of study area
- Existing trees contributing to streetscape
- Indicative location of multiple overhead power lines
- Indicative location of single overhead power lines
- Indicative location of water supply

### PROPOSED STREET TREE PALETTE



PROPOSED LARGE TREE OPTION  
*Eucalyptus populnea*  
Bimble Box



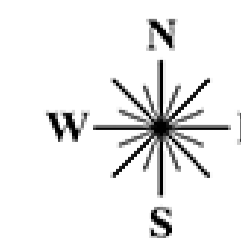
PROPOSED LARGE TREE OPTION  
*Eucalyptus coolabah*  
Coolabah



PROPOSED SMALL TREE OPTION  
*Eucalyptus erythrocorys*  
Red Capped Gum



PROPOSED SMALL TREE OPTION  
*Acacia aneura*  
Mulga



# CENTRAL DARLING SHIRE COUNCIL - PROPOSED STREETScape UPGRADES

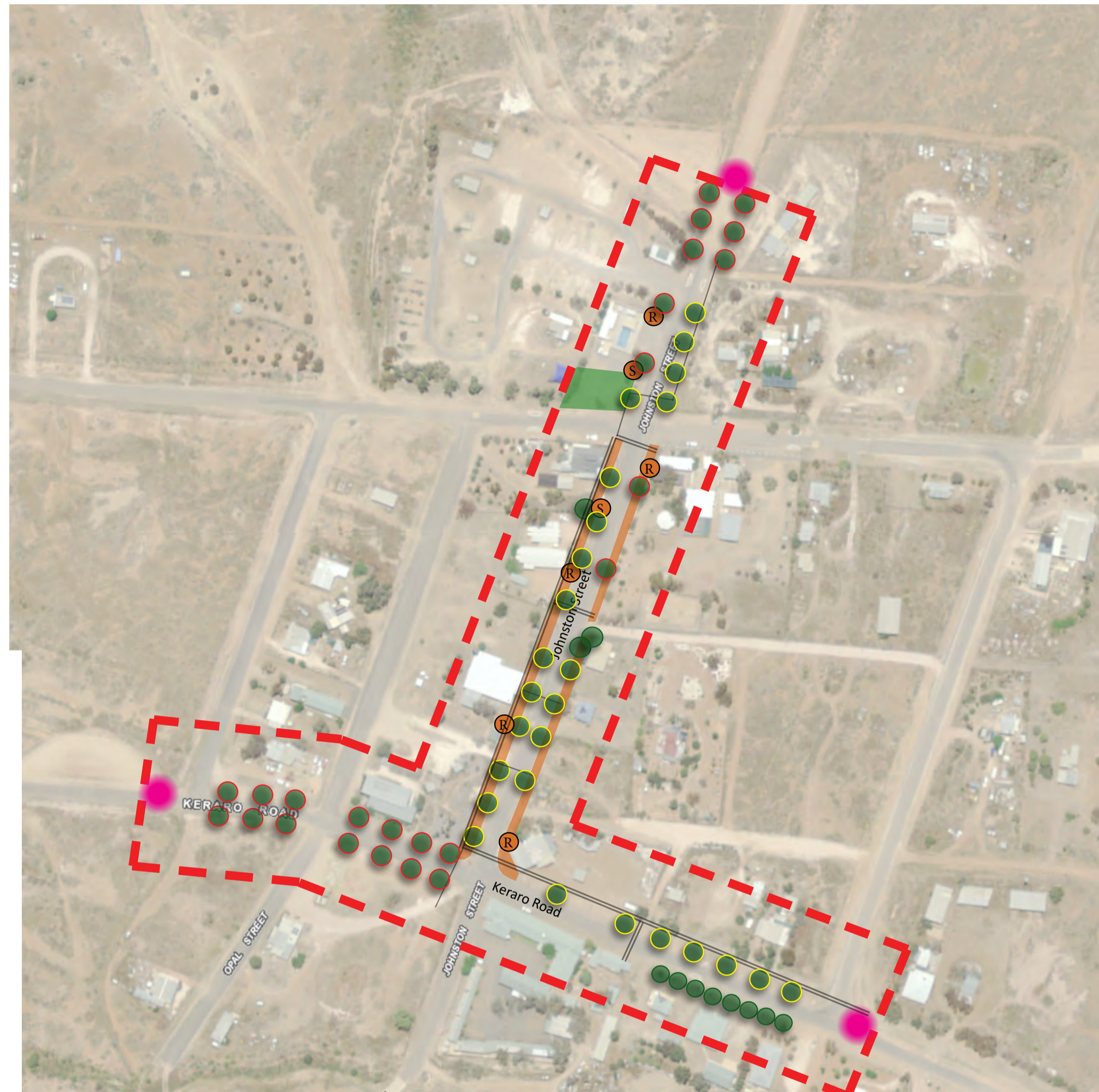
## WHITE CLIFFS TOWN CENTRE - OPPORTUNITIES & CONSTRAINTS

### ISSUES & CONSTRAINTS

- Summer temperatures are extreme limiting use of outdoor facilities
- No existing street trees to provide shade during temperature extremes
- Limited water supply for town may limit watering opportunities
- Locations of overhead power lines restrict proposed locations for street trees and/or limit size of trees to be planted
- Dry and hot conditions limit the types of suitable street tree species
- Lack of street infrastructure such as driveway cross overs, footpaths, kerbs and gutters
- Street furniture in poor condition
- Wheel stops within town in poor condition and unsightly
- Works to be carried out progressively, prioritised list of proposed works to be developed

### OPPORTUNITIES

- Wide road reserves allow for additional street tree plantings
- Plant smaller tree species under existing power lines
- Plant larger tree species in the road shoulder / grass verges
- Install pavement to Johnson Street frontages from Keraro Road to the Public School, consider dish drain to kerb edge
- Remove existing wheel stops and assess requirement for kerb or updated wheel stop solution
- Formalise driveway crossovers and limit bollard usage to a consistent type where required
- Introduce consistent street furniture pallet
- Identify opportunities for additional street furniture in shade
- Consolidated and update informative signage design across town / shire and consider digital access
- Engage with local community to implement street art / public art strategy
- Create sense of arrival via additional entry features at gateway points to town such as feature trees or sculpture

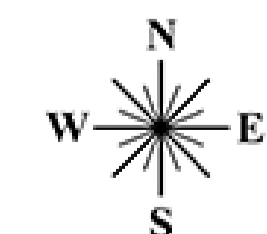


N  
Not to scale

Locations of site features and existing trees indicative.

### LEGEND

- Extent of study area
- New small tree under / near wires
- New large tree planting in road shoulder
- Existing tree to be retained
- New paved footpath
- Ⓡ New rubbish bin
- Ⓢ New seating
- Opportunity for feature entry such as
  - Feature trees
  - Sculpture by local artists
- Indicative location of overhead power lines



**CENTRAL DARLING**  
SHIRE COUNCIL

**barnson**  
DESIGN . PLAN . MANAGE

# CENTRAL DARLING SHIRE COUNCIL - PROPOSED STREETScape UPGRADES

## PROPOSED STREET FURNITURE PALETTE & PAVING



Proposed street bench and seat options - Draffin Street Furniture  
Hobart / Hamilton Range  
Corten / weathering steel frame  
Timber or timber look aluminium battens



Central Darling Shire Bin Enclosures  
Stainless steel frame, Corten / weathering steel panels



Water fountain - Street Furniture Australia  
Arqua Fountain - Stainless steel



Tree planting to road shoulder  
Concrete kerb protection



Tree Guards - Draffin Street Furniture  
Corten / weathering steel



White Cliffs  
Timber bollard to match existing  
or Vivid Bollard



Proposed Table Setting - Draffin Street Furniture  
Brisbane Table Setting  
Stainless Steel  
Timber or timber look aluminium battens



Tree Surround Option  
Resin Bonded Gravel



Tree Surround option - Tree grates  
Stainless Steel

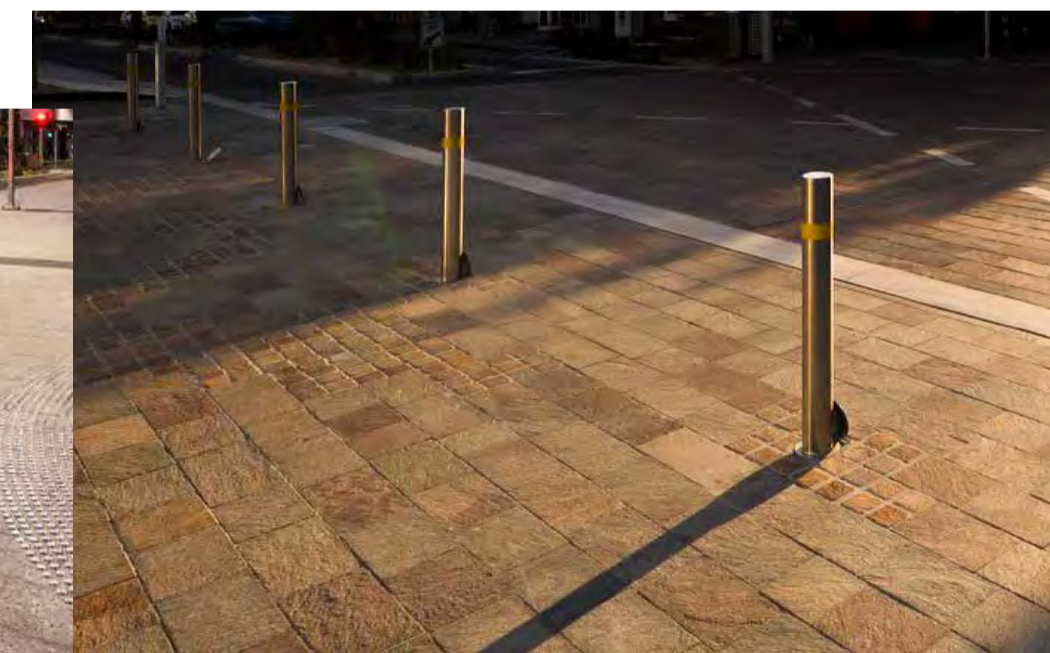
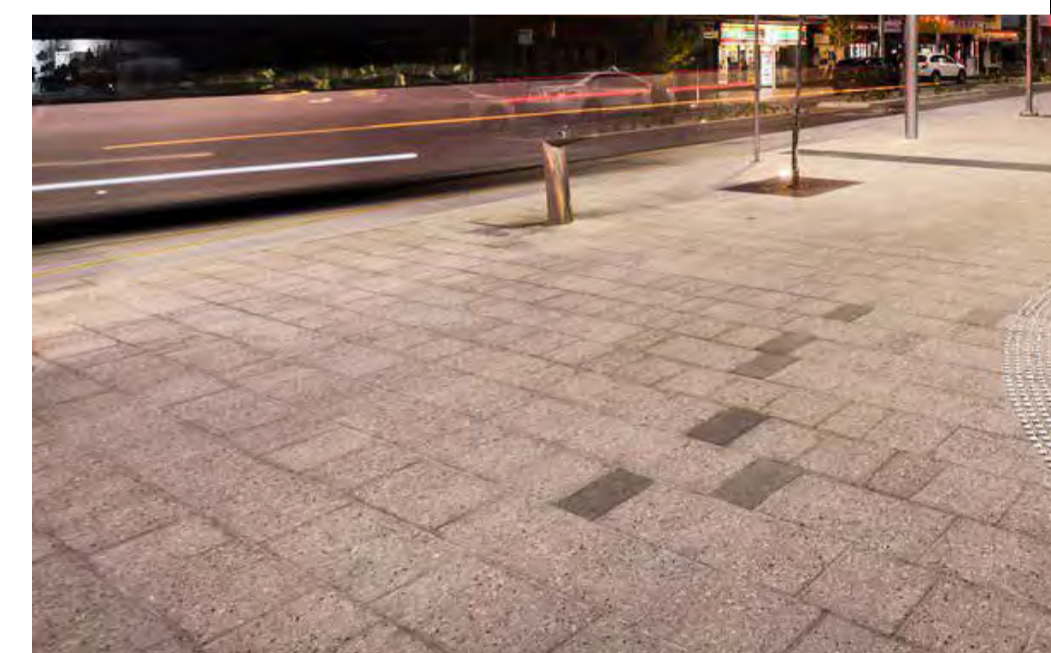


Paver Option - Adbri Masonry  
HAVENSLAB® 50 - Oatmeal & Charcoal  
Concrete Unit Paver

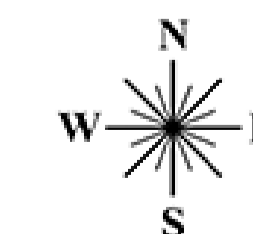


Paver Option - Australbrick  
Earth Range  
Straw

Paver Option - Australbrick  
London Dry Pressed Paver  
Maple



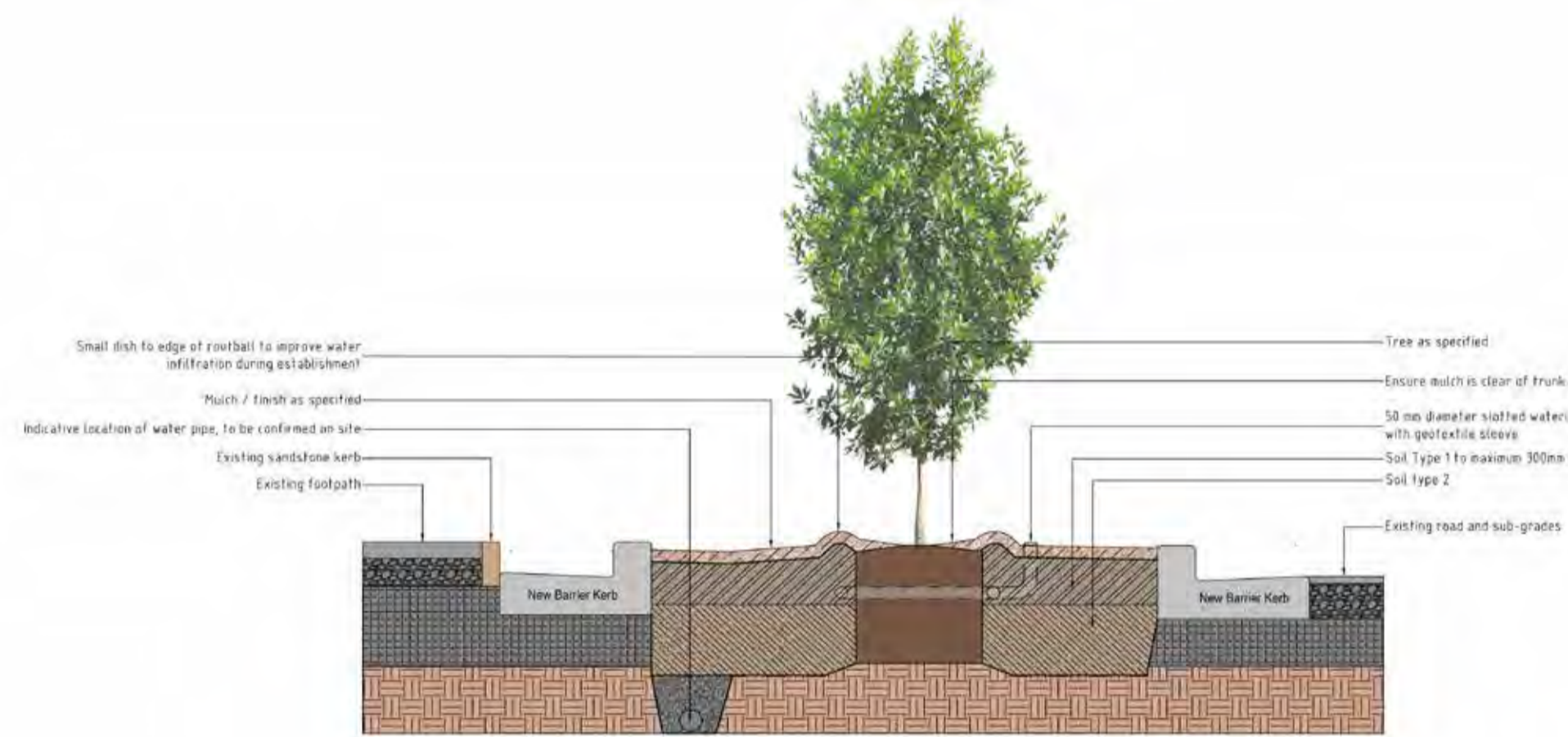
Wilcannia Paver Option - UrbanStone  
200 x 300 / 200 x 200 / Cobble  
Western Cream  
River Topaz  
Silver Grey  
Engineered Stone Paver



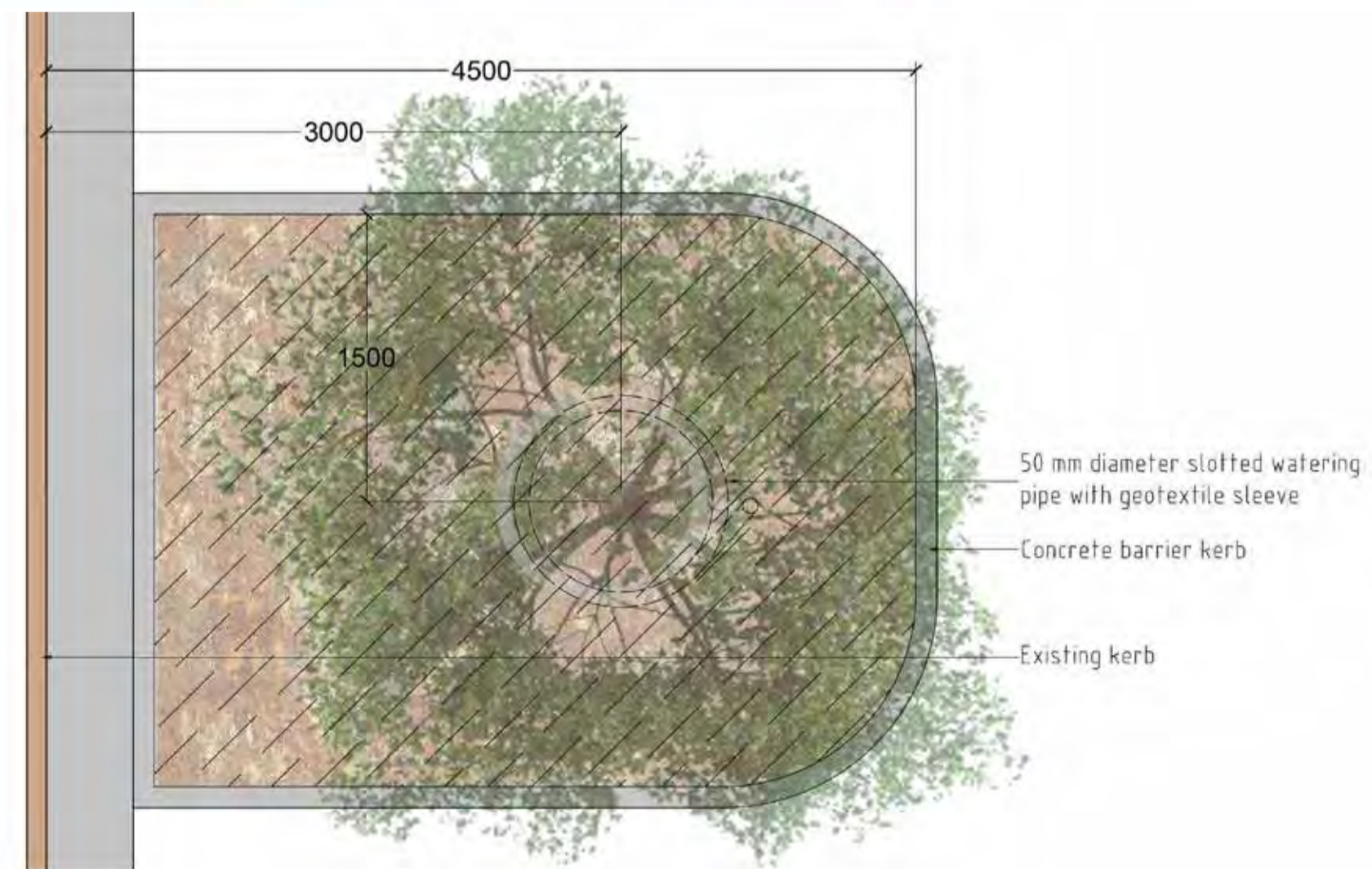
# CENTRAL DARLING SHIRE COUNCIL - PROPOSED STREETScape UPGRADES



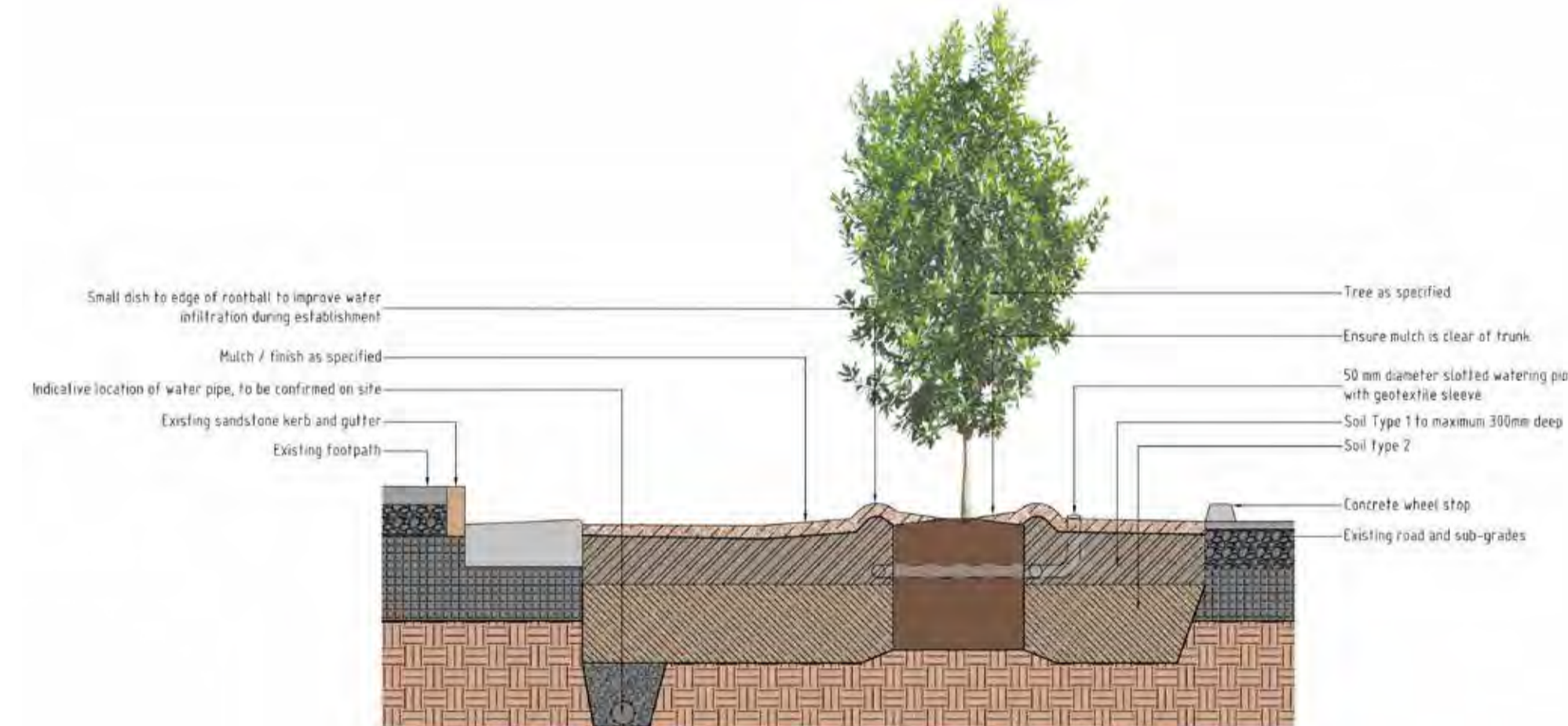
Indicative Street-view - Wilcannia



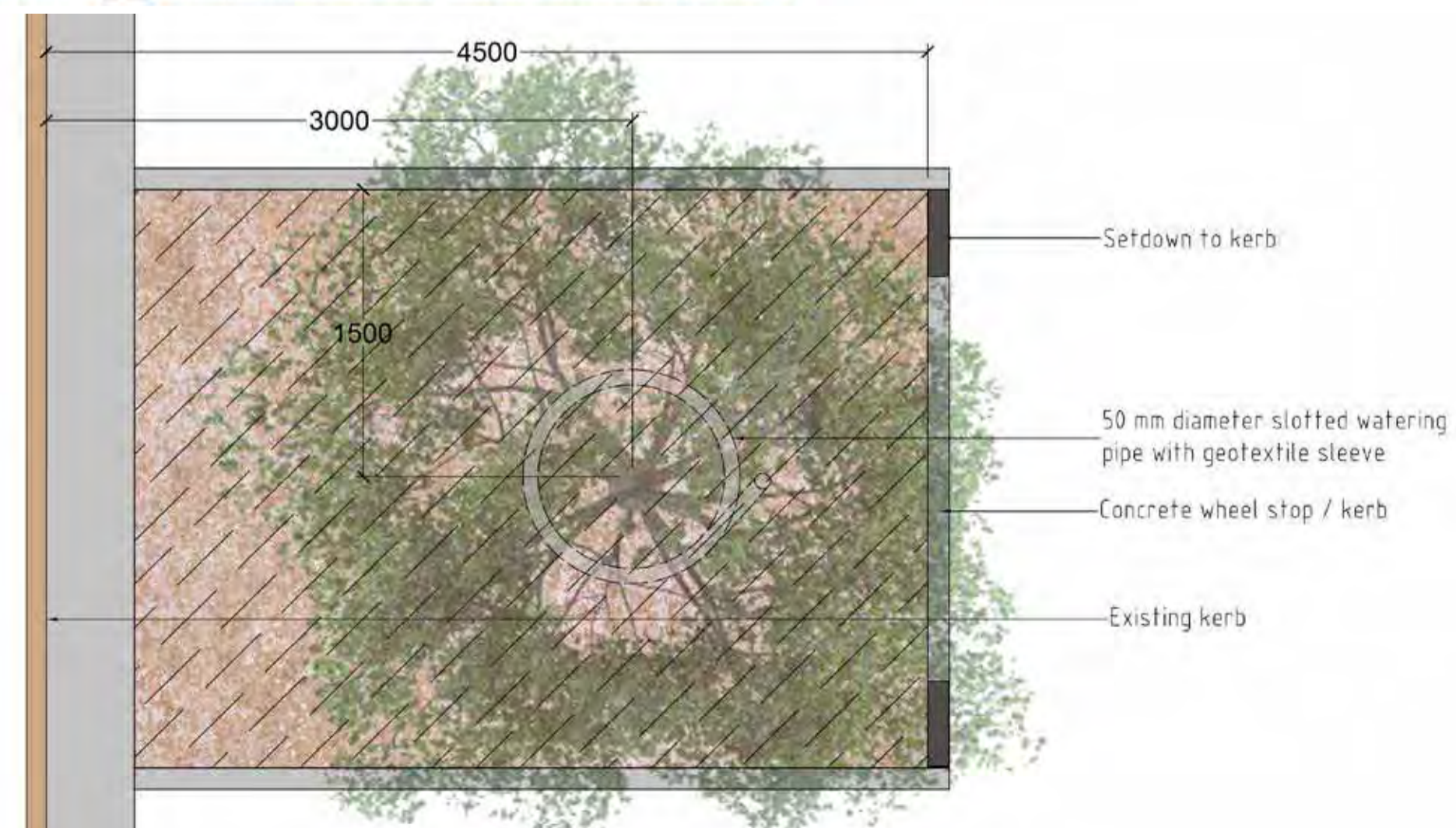
Indicative Section  
Tree pit with full surrounding kerb



Indicative Plan  
Tree pit with full surrounding kerb



Indicative Section  
Tree pit with broken / WSUD kerb



Indicative Plan  
Tree pit with broken / WSUD kerb

