

**CENTRAL DARLING  
SHIRE COUNCIL**

# **CENTRAL DARLING SHIRE STREETSCAPE UPGRADES WILCANNIA, MENINDEE, IVANHOE & WHITE CLIFFS**

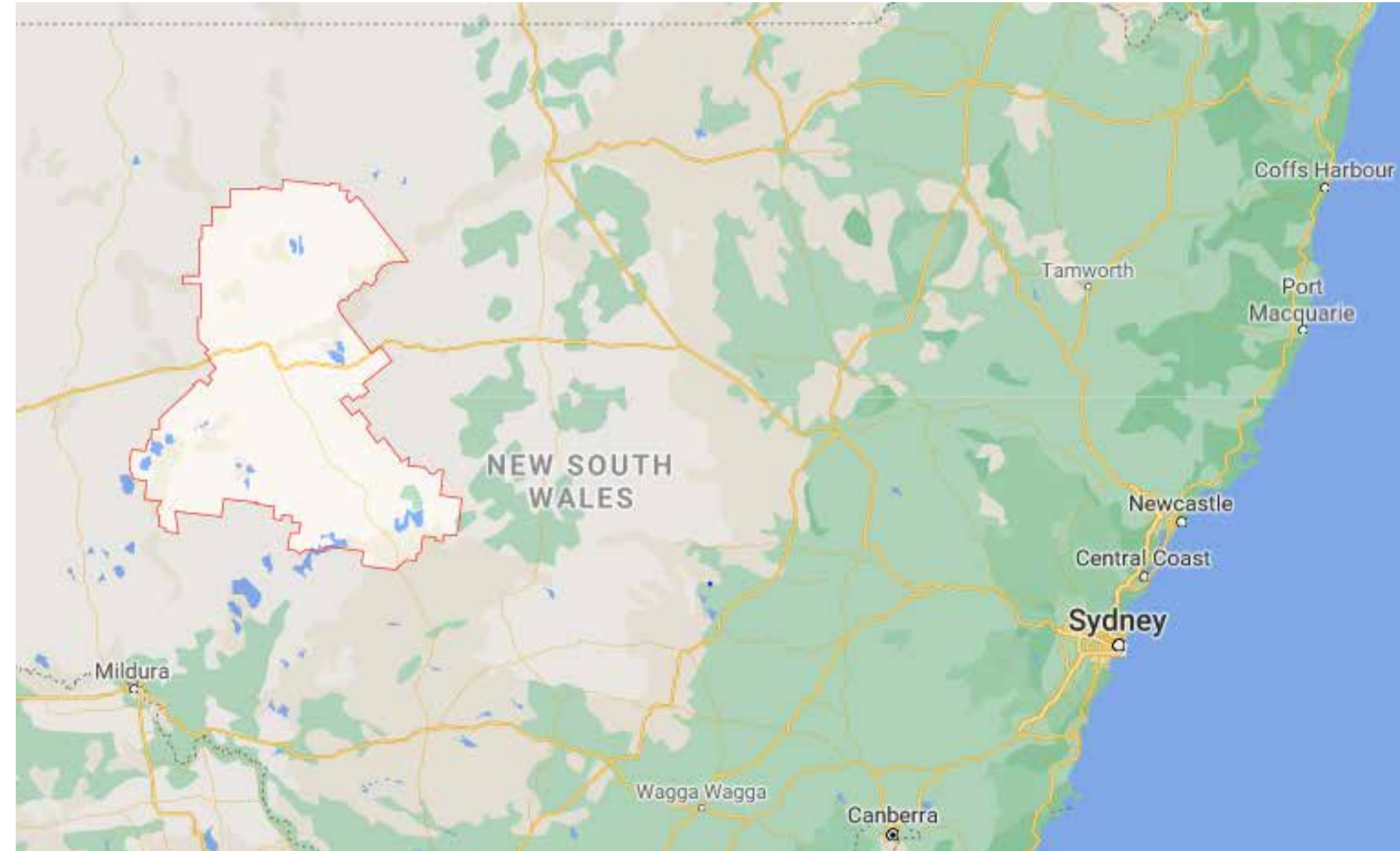


## **DOCUMENT HISTORY**

REV	DATE	AMENDMENT
A	14/04/2021	Draft for review
B	23/06/2021	Revised for review

# CENTRAL DARLING SHIRE COUNCIL - PROPOSED STREETScape UPGRADES

## STATE CONTEXT



## BACKGROUND

Central Darling Shire is the largest Shire in NSW, however has the smallest population. This, combined with its remote location and the distances between town centres creates a number of challenges. The administrative centre of the Shire, Wilcannia is located on the Darling River, 560km west of Dubbo and 714km north east of Adelaide. Menindee, with the largest population in the Shire is located 150km south west of Wilcannia, and Ivanhoe on the Cobb Highway is located 182km south east of Wilcannia. White Cliffs is around 255 km northeast of Broken Hill, and 93 km north of Wilcannia.

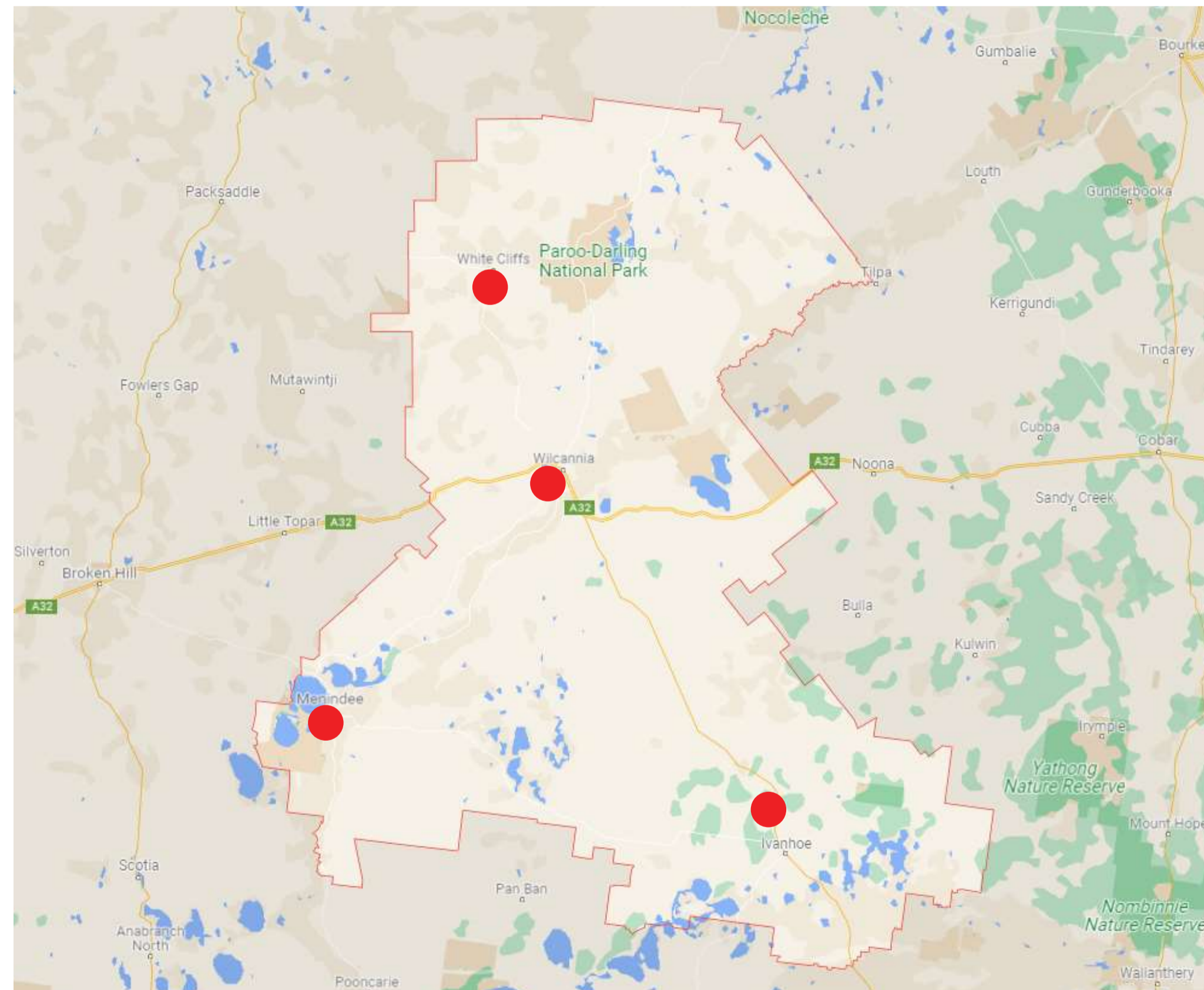
Aboriginal occupation by the Barkindji Tribe within the region can be traced back a long way, with significant sites at Lake Mungo to the south of Wilcannia and Mutawintji to the north-west. Archaeological finds within in the dry sand dunes around Menindee Lakes have provided some of the earliest remnants of human existence anywhere in the world.

Opal was first discovered in White Cliffs in the late 19th century. The town boomed through to 1900 with numerous businesses and services in town. Other towns within the region sprung up during the early 20th century functioning as stops on the extensive paddle steamer trade route along the Darling River, and later the rail line. Wilcannia was the third largest inland port in the country during its 70 year peak from 1880. With rail and river trade ceased, towns and populations within the region have declined and employment opportunities have changed and reduced. Today agriculture is the primary source of income for a number of residents, whilst opal mining continues in White Cliffs, with tourism also playing an important role.

Central Darling Shire Council is looking to revitalise town centres within the region by carrying out streetscape works to improve the atmosphere of key streets and create a more appealing environment for residents and visitors. As a starting point for discussions with local communities this preliminary streetscape masterplan has been developed to identify existing site features and opportunities for improvement. This document is a working document, which will evolve as community consultation is undertaken and Council planning policies developed.

Site visits to three of the town centres within the Shire were undertaken in November 2020, with arborist assessment of street trees carried out in January 2021. A further site inspection was undertaken in June 2021.

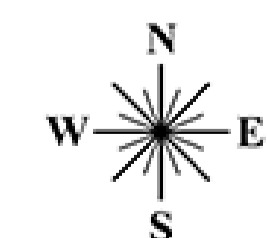
## REGIONAL CONTEXT



## KEY GOALS

The following key goals have been developed for street scape upgrade works:

- Identify opportunities for greening and increased shade coverage
- Select drought resistant species for planting
- Improve appearance of selected key streets
- Carry out footpath restoration works to improve safety and make town centres more pedestrian friendly
- Create a holistic look for each town that suits local conditions
- Develop a consistent palette of materials and street furniture that suits the character of the area
- Improve tourist appeal and encourage visitors to stop in town centres



# CENTRAL DARLING SHIRE COUNCIL - PROPOSED STREETScape UPGRADES

## IVANHOE TOWN CENTRE - SITE ANALYSIS

### EXISTING BUILDINGS



Ivanhoe Hotel



Historic department store



Multi Service Outlet



Post Office



Community Hall



RSL Club



Ivanhoe Health Services



Motel

### EXISTING STREET FURNITURE



Rubbish Bin Type 1



Rubbish Bin Type 2



Rubbish Bin Type 3



Painted concrete planter



Painted concrete planters



Concrete planters



Seat type 1



Mixed signage types & Water fountain



Totem Poles & Informative signage



Sculpture wall



Seat type 2



Picnic Table Type 1



Picnic Table Type 2



Water fountain type 1

### LEGEND

--- Extent of study area

1 Petrol Station / Caravan Park

2 Ivanhoe Hotel/Motel

3 Post Office

4 Ivanhoe Central School

5 Butcher

6 Police Station

7 RSL Club

8 Motel

9 B'n'B

10 Hospital / medical centre

11 Public Toilet

12 Sculpture / War Memorial

13 Informative signage, seating and Historical memorabilia in park

14 Ivanhoe Community Hall

15 Multi Service Outlet

— Existing concrete kerb

— Existing grass verge, no kerb

— Existing paved area

- - - Existing concrete footpath in turf

R Rubbish bin

S Seat

W Water fountain

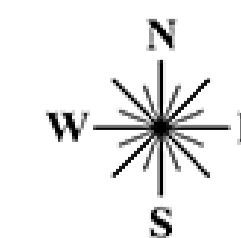
T Picnic table

P Pay phone

B Bus stop / shelter

C Raised concrete planter

R&A Raised concrete planter with artwork



N  
↑  
Not to scale

Locations of site features and existing trees indicative.



# CENTRAL DARLING SHIRE COUNCIL - PROPOSED STREETScape UPGRADES

## IVANHOE TOWN CENTRE - STREET TREES

### TREE ASSESSMENT

Electrical poles are located on the north side of road, in a very wide road reserve/verge. To the north of town two informal rows of trees are located in the verge, with a double row outside hospital. Space is available for more plantings, including double rows of trees.

From Bourke Street east, kerb and gutter commence. The road reserve remains very wide, with an island of trees close to the property boundary surrounded by a gravel access road. A second fragmented line of small trees is located behind the kerb. Opposite to Kennedy Street there are dead Eucalyptus sp. and hollow Peppercorn. Wires are delivered to residences from north side of street result in good scope to plant in the road reserve / verge.

The service road at Kennedy Street is wide. Planting could be enhanced behind kerb and at 2 m from south side (street side) of access road to provide a continuous second row of trees surrounded by wheel stops for protection.

On the south side (opposite) Peppercorn Trees are hollow and decayed and are likely structurally deteriorated in the area of footpath east from the RSL to the Ivanhoe Hotel.

From Cook Street to Behring Street trees plantings are fragmented and trees have been top lopped under wires. Smaller trees set back 1 m from kerb and a second row 3 m from the foot path and alternating would provide greater coverage and shade. On the opposite side of the road the opportunity exists to plant in road shoulder with trees protected by wheel stops. A new second alternating row of trees 1 m behind kerb could be planted from Balranald Road to opposite Behring Street.



### LEGEND

- - - Extent of study area
- Existing street trees in verge / pavement
- Existing street trees in road shoulder
- Indicative location of multiple overhead power lines
- Indicative location of single overhead power lines
- Indicative location of raw water

### PROPOSED STREET TREE PALETTE



PROPOSED FEATURE TREE OPTION  
*Fraxinus angustifolia* subsp. *oxycarpa* 'Raywoodi'  
Claret Ash



PROPOSED SMALL TREE OPTION  
*Eucalyptus erythrocorys*  
Red Capped Gum



PROPOSED LARGE TREE OPTION  
*Eucalyptus populnea*  
Bimble Box



PROPOSED NARROW / SMALL TREE OPTION  
*Brachychiton populneus*  
Kurrajong

### EXISTING STREET TREES



Existing Callistemon in planters under Peppercorn trees



Existing Athel Pine at gravel service road



Existing row of trees against kerb at service road



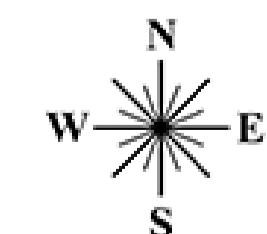
Existing garden bed at community hall



Typical streetscape with wide road shoulder and verge



Space available for additional planting at service / access road



N  
Not to scale

Locations of site features and existing trees indicative.



# CENTRAL DARLING SHIRE COUNCIL - PROPOSED STREETScape UPGRADES

## IVANHOE TOWN CENTRE - OPPORTUNITIES & CONSTRAINTS

### ISSUES & CONSTRAINTS

- Locations of overhead power lines restrict proposed locations for street trees and/or limit size of trees to be planted
- Dry and hot conditions limit the types of suitable street tree species
- Location of raw water supply limits tree planting extents / locations
- Street furniture, concrete planters and garden beds are scattered on footpath, resulting in congested and disjointed look
- Town contains areas of disjointed paving which require maintenance and or repair
- Funding for works TBC, prioritised list required
- Works proposed to Columbus Street / Cobb Highway may require RMS approval

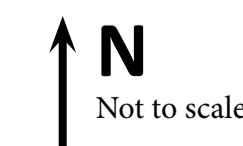
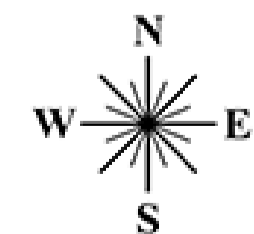
### OPPORTUNITIES

- Wide road reserves and footpaths allow for a double row of additional street tree plantings
- Select smaller tree species for use under power lines and in the town centre to give unified look
- Select larger tree species for use in the road reserve / grass verges to give unified look
- Rationalise locations, numbers and types of street furniture
- Introduce consistent street furniture pallet throughout town
- Remove concrete planters and streamline footpath, garden bed and street furniture layout
- Extend existing paved footpath area to link to pedestrian crossing at Post Office
- Instigate footpath maintenance / replacement programme to address areas of aging paved footpath
- Create sense of arrival via entry features at gateway points to town
- Streamline design of gravel access road and green space adjoining sculpture wall to provide attractive place for residents and visitors to stop
- Consolidated informative & interpretive signage design across town / shire and consider digital access



### LEGEND

- Extent of study area
- New small tree under wires
- New large tree planting in road shoulder
- New large tree planting to grass verge
- Existing tree to be retained
- New paved footpath, colour to match or compliment existing
- Existing paved footpath to be maintained / progressively upgraded
- Ⓡ New rubbish bin
- Ⓢ New seating
- Ⓣ New tables and seating
- Opportunity for feature entry
- Upgrade public open space including;
  - Review layout to create more user friendly spaces and increase kerb appeal;
  - Upgrade furniture in line with street furniture palette;
  - Rationalise and update informative and historical signage;
  - Strategically locate new tree plantings for maximum shade cover; and
  - Review vehicle access and surrounding parking areas in adjoining service road.
- Indicative location of overhead power lines



Not to scale

Locations of site features and existing trees indicative.



# CENTRAL DARLING SHIRE COUNCIL - PROPOSED STREETScape UPGRADES

## PROPOSED STREET FURNITURE PALETTE & PAVING



Proposed street bench and seat options - Draffin Street Furniture  
Hobart / Hamilton Range  
Corten / weathering steel frame  
Timber or timber look aluminium battens



Central Darling Shire Bin Enclosures  
Stainless steel frame, Corten / weathering steel panels



Water fountain - Street Furniture Australia  
Arqua Fountain - Stainless steel



Tree planting to road shoulder  
Concrete kerb protection



Tree Guards - Draffin Street Furniture  
Corten / weathering steel



White Cliffs  
Timber bollard to match existing  
or Vivid Bollard



Proposed Table Setting - Draffin Street Furniture  
Brisbane Table Setting  
Stainless Steel  
Timber or timber look aluminium battens



Tree Surround Option  
Resin Bonded Gravel



Tree Surround option - Tree grates  
Stainless Steel

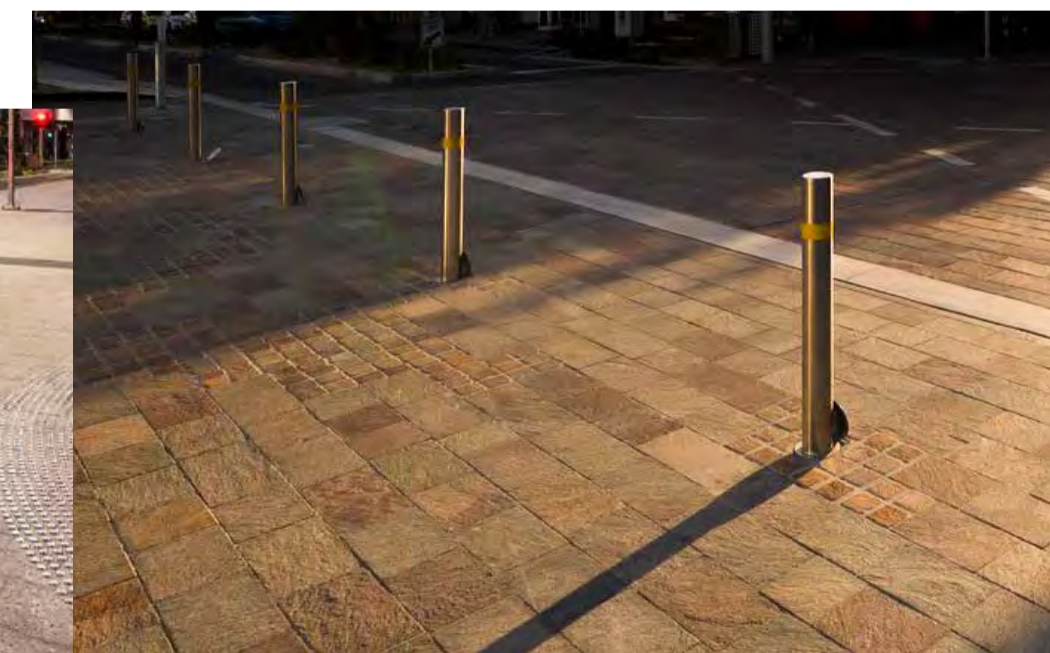
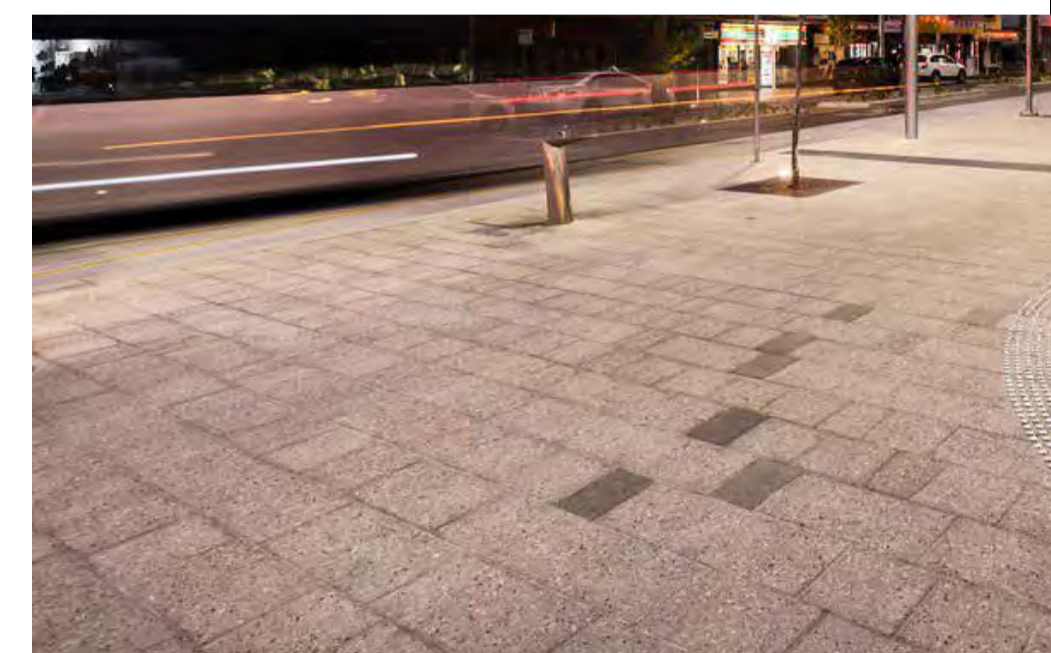


Paver Option - Adbri Masonry  
HAVENSLAB® 50 - Oatmeal & Charcoal  
Concrete Unit Paver

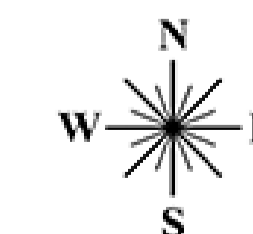


Paver Option - Australbrick  
Earth Range  
Straw

Paver Option - Australbrick  
London Dry Pressed Paver  
Maple



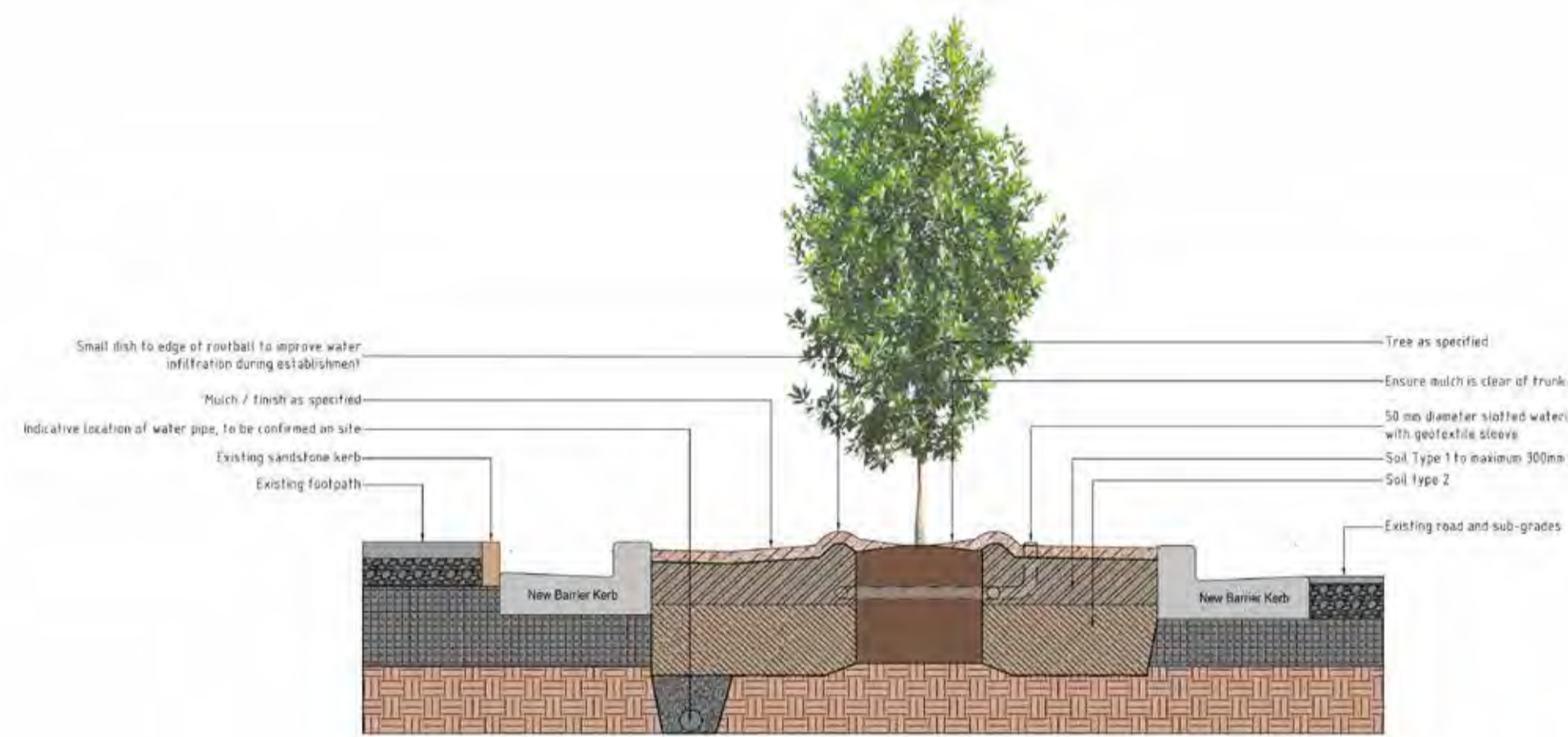
Wilcannia Paver Option - UrbanStone  
200 x 300 / 200 x 200 / Cobble  
Western Cream  
River Topaz  
Silver Grey  
Engineered Stone Paver



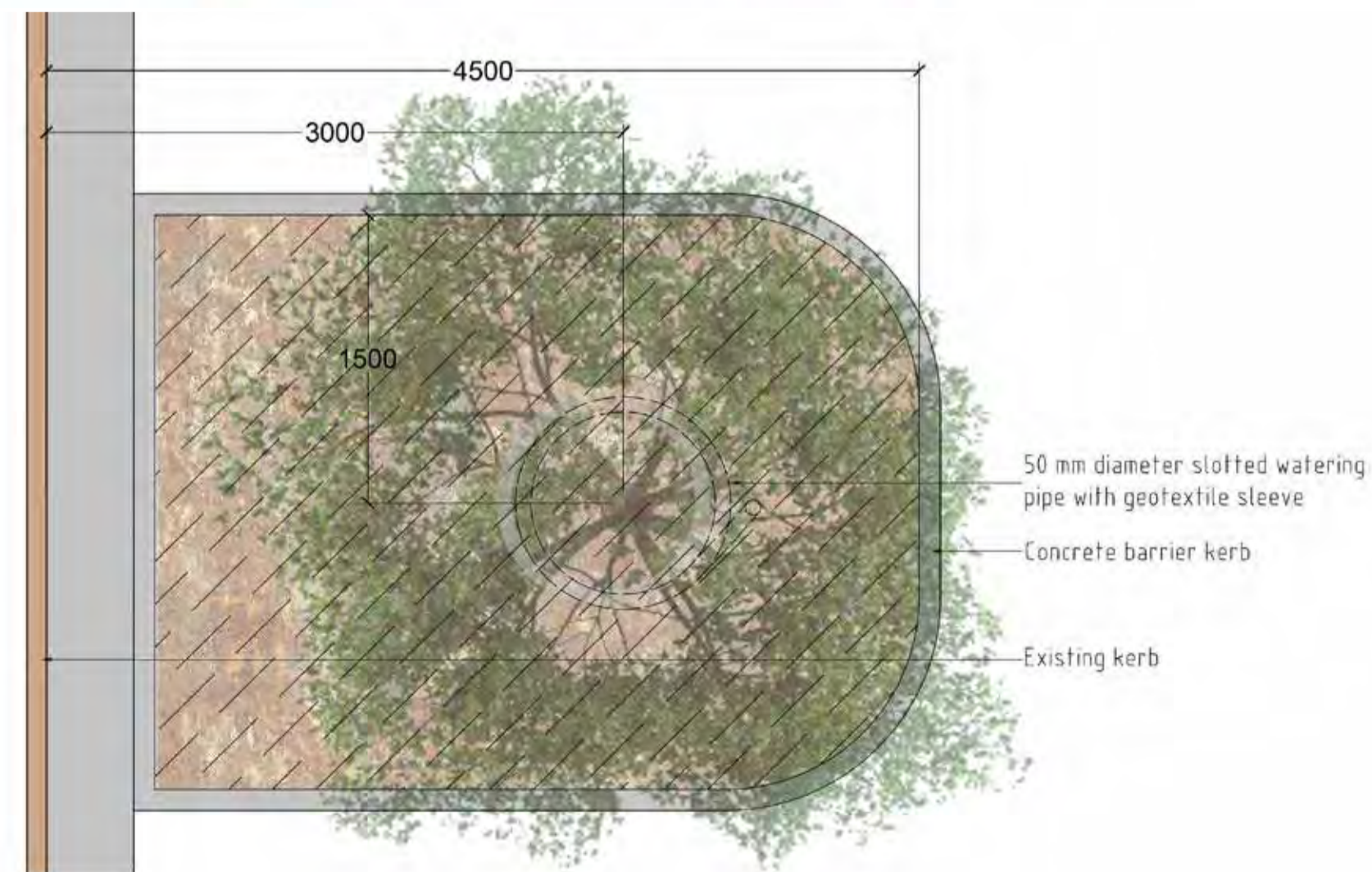
# CENTRAL DARLING SHIRE COUNCIL - PROPOSED STREETScape UPGRADES



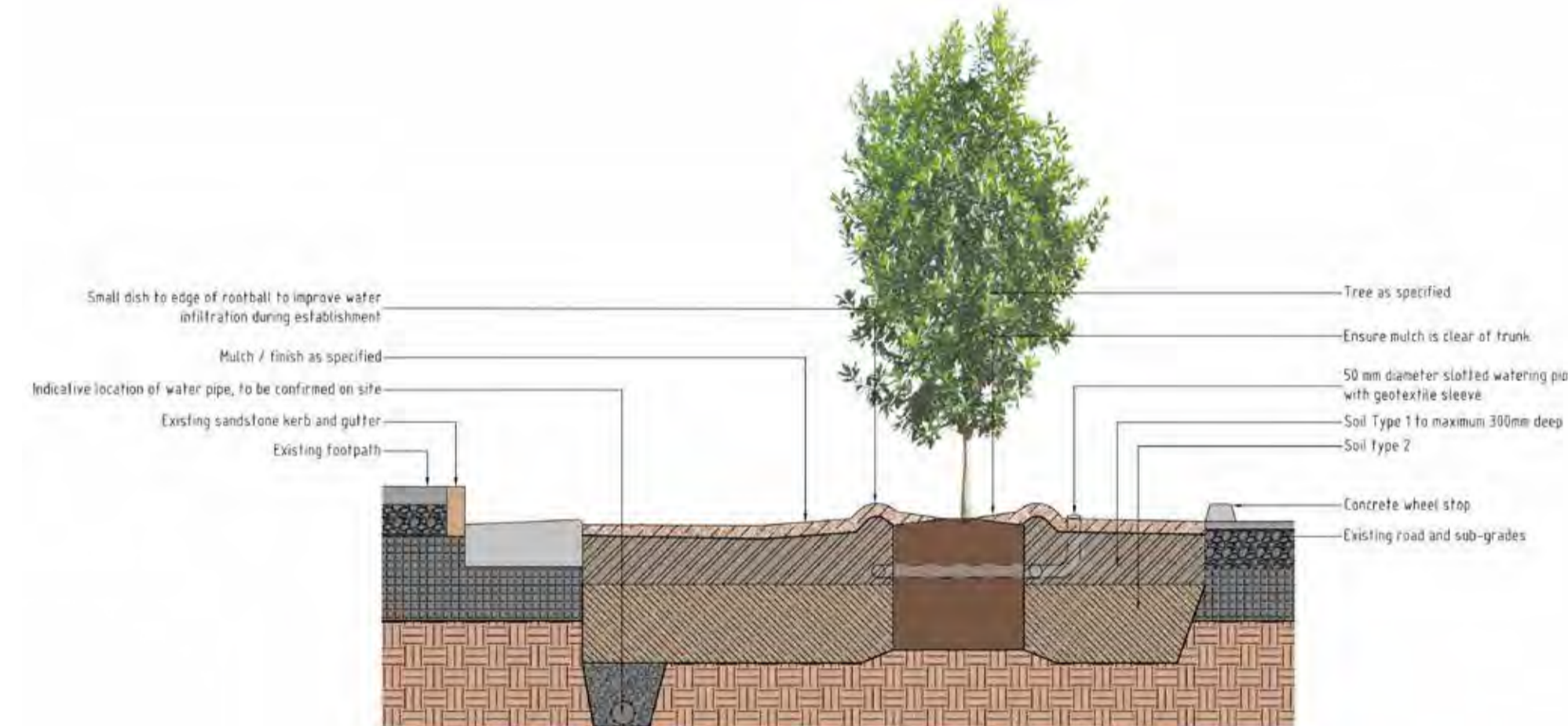
Indicative Street-view - Wilcannia



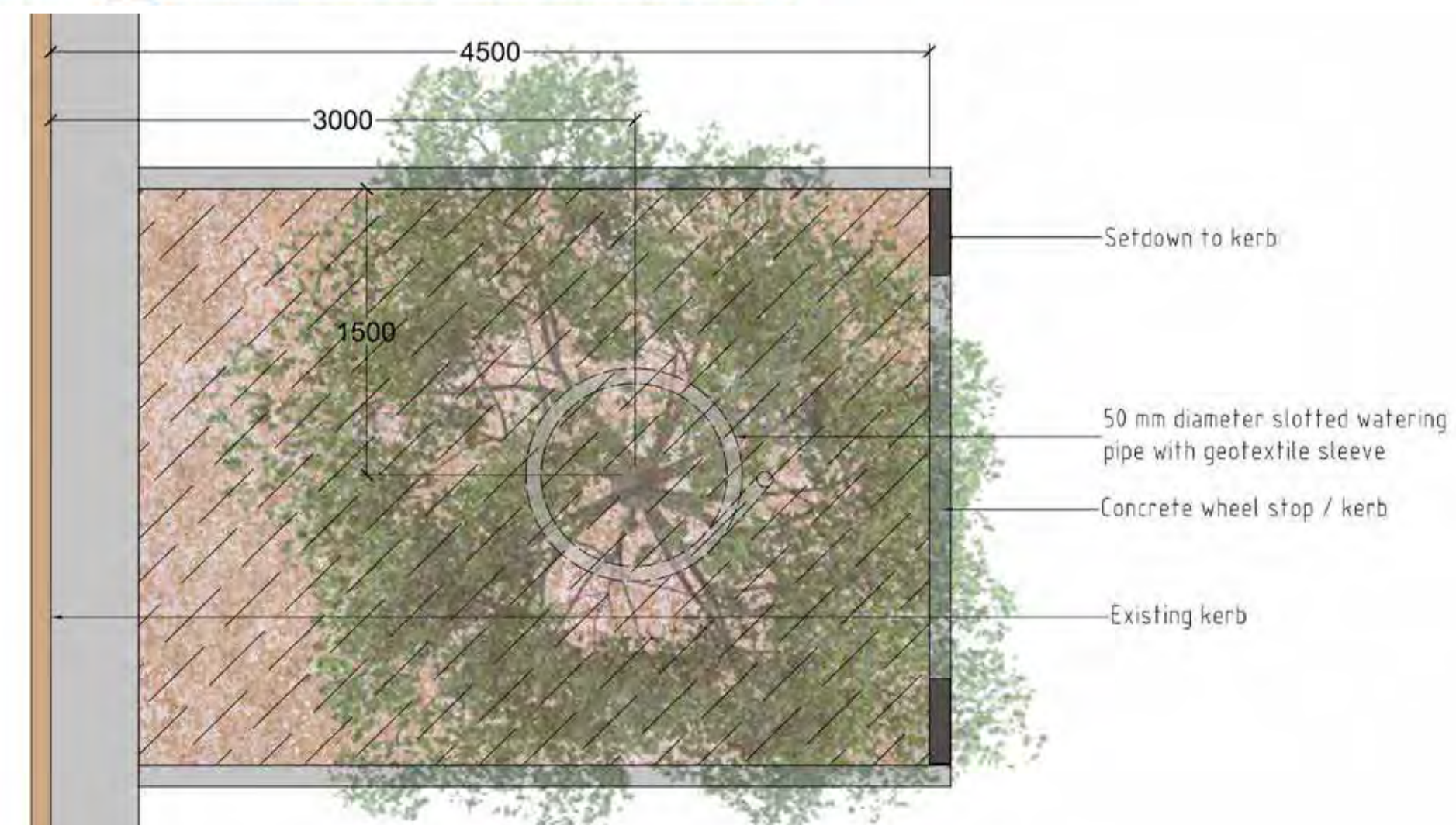
Indicative Section  
Tree pit with full surrounding kerb



Indicative Plan  
Tree pit with full surrounding kerb



Indicative Section  
Tree pit with broken / WSUD kerb



Indicative Plan  
Tree pit with broken / WSUD kerb

