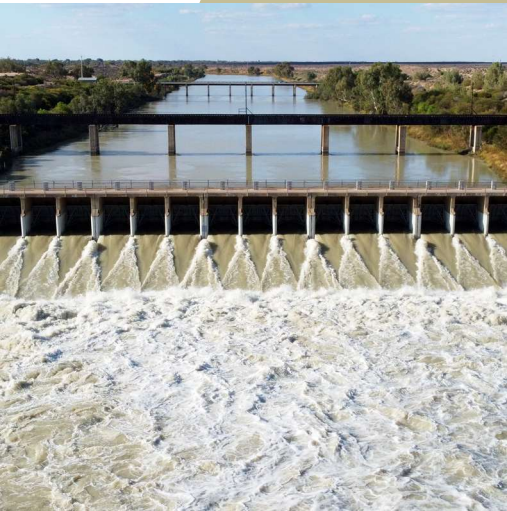


MENINDEE & DISTRICT Improvement Plan



2022–2032



CENTRAL
DARLING
SHIRE COUNCIL

Acknowledgement of Country

We acknowledge the traditional custodians of the Country within the Central Darling Shire and their Elders, past, present and emerging. We acknowledge the ongoing connection that Aboriginal people have to this Country, especially water and recognise Aboriginal people as the original custodians of this land. We thank them for their generosity in sharing their aspirations for the future and hope that these plans will affect change for communities of the shire.



About this plan

The Menindee and District Improvement Plan is part of a suite of plans developed by Central Darling Shire Council to guide its service design and delivery in years to come. These plans also provide important support for council in advocating for improved funding and services for the shire from other levels of government.

The Central Darling Shire Community Strategic Plan addresses issues and priorities across the shire as a whole at the highest level. However, as Central Darling Shire is so vast in area and its communities so remote and different, an Improvement Plan for each town and surrounding district has been developed to address the specific issues and needs of each community.



How to read this plan

This Menindee and District Improvement Plan shares a common structure with the Community Strategic Plan and is designed to be read in conjunction with that plan.

The Community Strategic Plan is built around six Focus Areas that provide categories to define and describe community priorities and issues within the shire. These include:



1. COMMUNITY AND CULTURE



2. LOCAL AND REGIONAL GOVERNANCE



3. NATURAL ENVIRONMENT



4. LOCAL ECONOMY



5. RURAL AND URBAN LAND USE



6. INFRASTRUCTURE AND SERVICES

These Focus Areas and Community Priorities also form the basis of this Improvement Plan. However, it is important to note that they are only included in this plan where there are issues specific to Menindee and district that need to be addressed. Issues and priorities common across other communities within the shire are listed in the Community Strategic Plan.

Each Community Priority includes a table listing issues requiring address and agencies accountable for address and resolution of each issue.

FOCUS AREA 1. COMMUNITY AND CULTURE



COMMUNITY PRIORITY – HOUSING	
IMPROVEMENT PRIORITIES	ACCOUNTABILITIES
Repair existing social housing stock and construct more houses	NSW Aboriginal Housing Office National Indigenous Australians Agency Menindee Local Aboriginal Land Council Murdi Paaki Regional Assembly Murdi Paaki Housing
Develop a range of sustainable, culturally responsive housing types appropriate for Aboriginal communities through all stages of life – young people, families and retirees	NSW Aboriginal Housing Office National Indigenous Australians Agency Menindee Local Aboriginal Land Council Murdi Paaki Regional Assembly Murdi Paaki Housing
Establish small local maintenance contracts for government-owned housing to build job opportunities and local capacity	NSW Aboriginal Housing Office National Indigenous Australians Agency Menindee Local Aboriginal Land Council Murdi Paaki Regional Assembly Murdi Paaki Housing

COMMUNITY PRIORITY – SERVICES AND FACILITIES FOR CHILDREN AND YOUNG PEOPLE	
IMPROVEMENT PRIORITIES	ACCOUNTABILITIES
Provide a drop-in centre with games and exercise equipment, after-school activities and school holiday programs for young people	NSW Department of Sport and Recreation NSW Department of Family and Community Services NSW Department of Education and Training NSW Police
Develop more accommodation for young people at the school	NSW Department of Education and Training Menindee Central School
Facilitate more frequent visits by Service NSW to issue L and P drivers licenses to young drivers	Service NSW
Provide education camps for young people to teach them about personal hygiene, safe sex and other relevant topics	NSW Department of Family and Community Services NSW Department of Education and Training NSW Department of Aboriginal Affairs National Indigenous Australians Agency NSW Department of Health

Develop structured night-time activities for young people including discos and movie nights	Central Darling Shire Council PCYC
Develop structured after-school activities for children incorporating sporting activities, healthy eating, etc	NSW Department of Sport and Recreation NSW Department of Family and Community Services NSW Department of Education and Training
Repurpose the shed at the oval as an activities centre for children and young people	Central Darling Shire Council PCYC

COMMUNITY PRIORITY – LOCAL SPORT AND RECREATION

IMPROVEMENT PRIORITIES	ACCOUNTABILITIES
Provide more play equipment and shaded play areas for children at the park	Central Darling Shire Council
Rebuild and develop more local community sports including rugby league and touch football – big service providers should provide assistance with administration and co-ordination – e.g. first-aid kits from Maari Ma, admin support from police.	NSW Department of Sport and Recreation NSW Rugby League Maari Ma Health Aboriginal Corporation NSW Police
Install heating at the pool to enable year-round access	NSW Department of Sport and Recreation
Construct netball courts for the town	Central Darling Shire Council
Construct a skate park for the town	Central Darling Shire Council

COMMUNITY PRIORITY – COMMUNITY EVENTS

IMPROVEMENT PRIORITIES	ACCOUNTABILITIES
Establish monthly town dinners to bring local communities together	Menindee Local Aboriginal Land Council Murdi Paaki Regional Assembly

FOCUS AREA 2. LOCAL AND REGIONAL GOVERNANCE



COMMUNITY PRIORITY – SHIRE GOVERNANCE

IMPROVEMENT PRIORITIES	ACCOUNTABILITIES
Provide opportunities for local children and young people to be heard through a youth council or committee	Central Darling Shire Council
Allocate accurate lot numbers for all houses	Central Darling Shire Council

FOCUS AREA 4. LOCAL ECONOMY



COMMUNITY PRIORITY – EMPLOYMENT	
IMPROVEMENT PRIORITIES	ACCOUNTABILITIES
Establish local employment programs for school leavers to enable them to remain on country	NSW Department of Education and Training TAFE NSW REDI-E
Establish local employment programs for school leavers to enable them to remain on country	NSW Department of Education and Training TAFE NSW REDI-E

FOCUS AREA 5. RURAL AND URBAN LAND USE



COMMUNITY PRIORITY – GREENING AND BEAUTIFICATION OF TOWNS	
IMPROVEMENT PRIORITIES	ACCOUNTABILITIES
Improve town entrances and engage with local communities to design new welcome signage	Central Darling Shire Council
Facilitate the installation of a local art trail	Menindee Central School Central Darling Shire Council

FOCUS AREA 6. INFRASTRUCTURE AND SERVICES



COMMUNITY PRIORITY – DRINKING WATER	
IMPROVEMENT PRIORITIES	ACCOUNTABILITIES
Improve water flow and quality in the river	Water NSW NSW Department of Planning, Industry and Environment Murray Darling Basin Authority
Increase the town water supply	Essential Water
Improve the quality of local drinking water to ensure it meets Australian Drinking Water Standards	Essential Water

COMMUNITY PRIORITY – LOCAL AND REGIONAL ROADS	
IMPROVEMENT PRIORITIES	ACCOUNTABILITIES
Improve local road infrastructure including increased sealing of regional roads and more frequent maintenance of unsealed roads.	Transport for NSW (Roads and Waterways) Central Darling Shire Council
Investigate road safety and traffic calming measures to slow traffic down in the urban area	Central Darling Shire Council

COMMUNITY PRIORITY – LOCAL SERVICES	
IMPROVEMENT PRIORITIES	ACCOUNTABILITIES
Provide a social worker at the local health service to assist with paperwork and other issues	NSW Department of Health Maari Ma Health Aboriginal Corporation
Provide greater police presence in town at night	NSW Police
Establish a local refuge for women encountering domestic violence	Maari Ma Health Aboriginal Corporation NSW Department of Aboriginal Affairs
Establish a local dry-out centre for men and women	NSW Department of Health Maari Ma Health Aboriginal Corporation
Facilitate an increased frequency of doctors visiting town	NSW Department of Health Maari Ma Health Aboriginal Corporation
Establish a regional drug and alcohol rehabilitation facility on country	NSW Department of Health Maari Ma Health Aboriginal Corporation
Establish a local night patrol with the involvement of local elders	NSW Police
Facilitate to provision of a local multi-purpose community bus	Central Darling Shire Council Murdi Paaki Regional Assembly
Increase the availability of local mental health and counselling services	NSW Department of Health Maari Ma Health Aboriginal Corporation
Provide regular cleaning services to empty public bins and remove rubbish and litter from public areas including streets, parks and the riverside	Central Darling Shire Council

Create an action request system to provide council with feedback	Central Darling Shire Council
Expand and upgrade local footpaths and street lighting	Central Darling Shire Council
Install an improved water bubbler closer to the park	Central Darling Shire Council
Conduct a cemetery audit to identify all graves	Central Darling Shire Council
Undertake beautification measures at the cemetery and construct toilets, drinking water supply, shaded tables and chairs and bins	Central Darling Shire Council

DRAFT



**CENTRAL
DARLING**
SHIRE COUNCIL

CONTACT US:

Central Darling Shire Council

PO Box 165

WILCANNIA NSW 2836

(08) 8083 8900

centraldarling.nsw.gov.au

