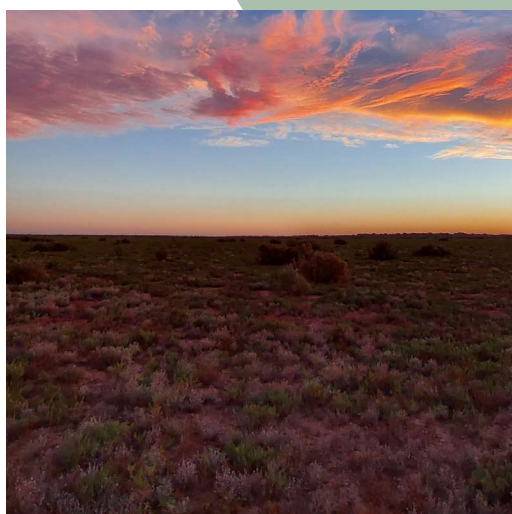


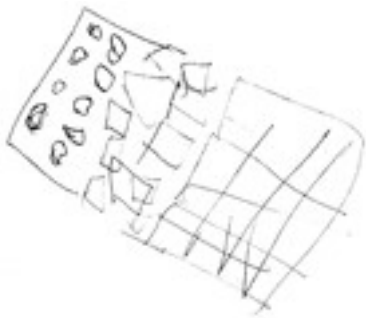
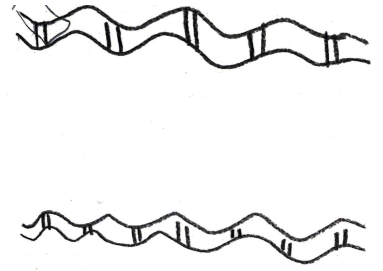
# WILCANNIA & DISTRICT Improvement Plan



2022–2032



CENTRAL  
DARLING  
SHIRE COUNCIL



Town improvement ideas by students from Wilcannia Central School.

## Acknowledgement of Country

---

We acknowledge the traditional custodians of the Country within the Central Darling Shire and their Elders, past, present and emerging. We acknowledge the ongoing connection that Aboriginal people have to this Country, especially water and recognise Aboriginal people as the original custodians of this land. We thank them for their generosity in sharing their aspirations for the future and hope that these plans will affect change for communities of the shire.

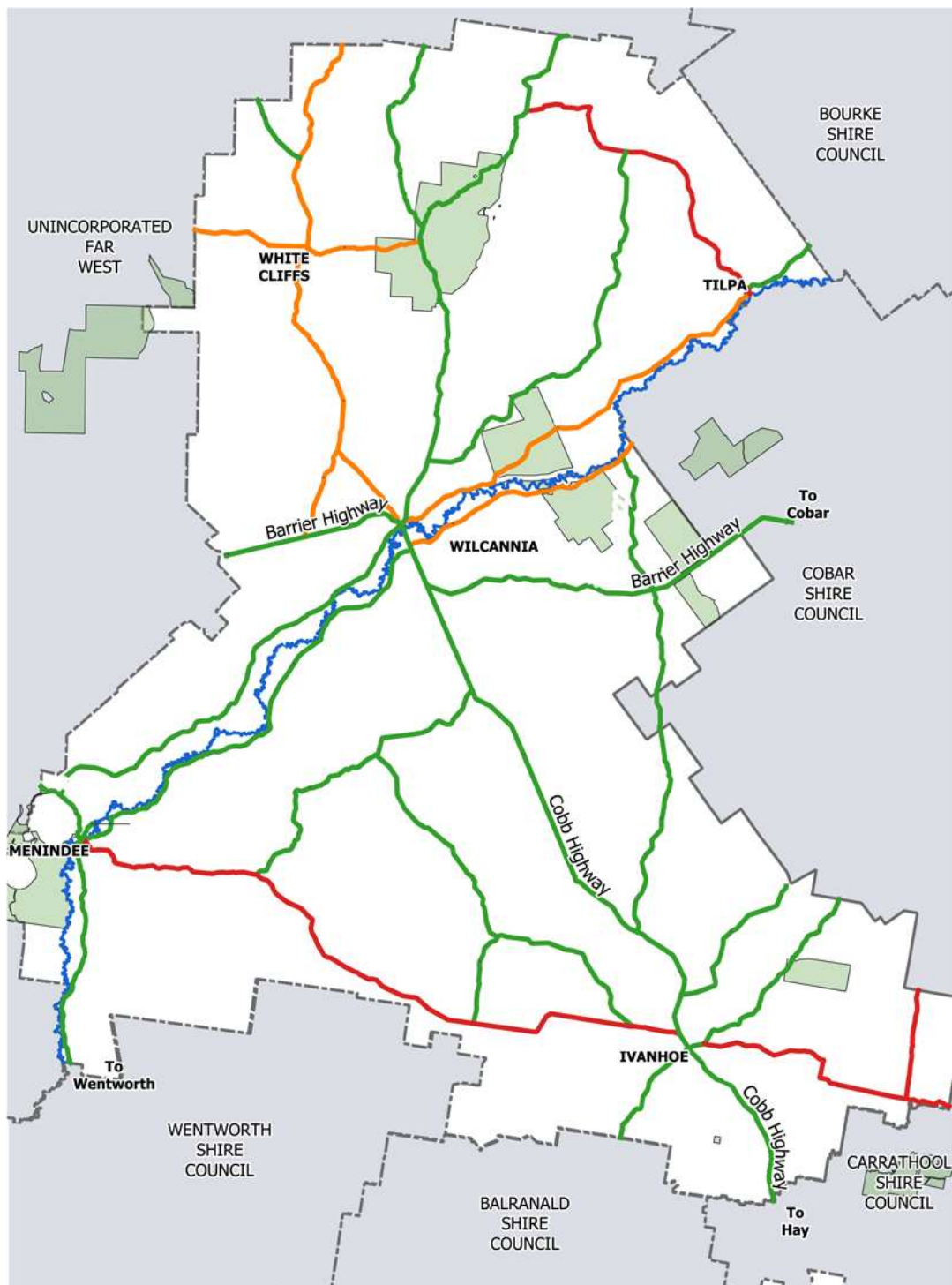


## About this plan

---

The Wilcannia and District Improvement Plan is part of a suite of plans developed by Central Darling Shire Council to guide its service design and delivery in years to come. These plans also provide important support for council in advocating for improved funding and services for the shire from other levels of government.

The Central Darling Shire Community Strategic Plan addresses issues and priorities across the shire as a whole at the highest level. However, as Central Darling Shire is so vast in area and its communities so remote and different, an Improvement Plan for each town and surrounding district has been developed to address the specific issues and needs of each community.



## How to read this plan

---

This Wilcannia and District Improvement Plan shares a common structure with the Community Strategic Plan and is designed to be read in conjunction with that plan.

The Community Strategic Plan is built around six Focus Areas that provide categories to define and describe community priorities and issues within the shire. These include:



### 1. COMMUNITY AND CULTURE



### 2. LOCAL AND REGIONAL GOVERNANCE



### 3. NATURAL ENVIRONMENT



### 4. LOCAL ECONOMY



### 5. RURAL AND URBAN LAND USE



### 6. INFRASTRUCTURE AND SERVICES

These Focus Areas and Community Priorities also form the basis of this Improvement plan. However, it is important to note that they are only included in this plan where there are issues specific to Wilcannia and district that need to be addressed. Issues and priorities common across other communities within the shire are listed in the Community Strategic Plan.

Each Community Priority includes a table listing issues requiring address and agencies accountable for address and resolution of each issue.

## FOCUS AREA 1. COMMUNITY AND CULTURE



COMMUNITY PRIORITY – HOUSING	
IMPROVEMENT PRIORITIES	ACCOUNTABILITIES
Repair existing housing stock and construct more Aboriginal / social housing	NSW Aboriginal Housing Office Wilcannia Local Aboriginal Land Council Murdi Paaki Regional Housing Corporation Mid Lachlan Aboriginal Housing Co-op
Develop a range of sustainable housing types appropriate for Aboriginal communities through all stages of life – young people, families and retirees	NSW Aboriginal Housing Office Wilcannia Local Aboriginal Land Council Murdi Paaki Regional Housing Corporation Mid Lachlan Aboriginal Housing Co-op
Establish small local maintenance contracts for government-owned housing to build job opportunities and local capacity	NSW Aboriginal Housing Office Wilcannia Local Aboriginal Land Council Murdi Paaki Regional Housing Corporation Mid Lachlan Aboriginal Housing Co-op
Repair or replace all non-functioning domestic rooftop solar water purifiers installed in Aboriginal and social housing	NSW Aboriginal Housing Office Wilcannia Local Aboriginal Land Council Murdi Paaki Regional Housing Corporation Mid Lachlan Aboriginal Housing Co-op

COMMUNITY PRIORITY – SERVICES AND FACILITIES FOR FAMILIES AND COMMUNITIES	
IMPROVEMENT PRIORITIES	ACCOUNTABILITIES
Provide drug and alcohol intervention and rehabilitation services in town	NSW Department of Health Maari Ma Health Aboriginal Corporation
Establish a community bus service when needed for sorry business transport and other tasks	NSW Department of Aboriginal Affairs
Establish a regular night patrol for Wilcannia with the involvement of Elders	NSW Police
Establish regular local Elders programs	Murdi Paaki Regional Assembly Maari Ma Health Aboriginal Corporation
Establish an Elders Board to administer local lore for Aboriginal people, similar to programs in Bourke, Balranald and Dubbo	Murdi Paaki Regional Assembly National Indigenous Australians Agency NSW Police
Establish greater presence of service providers in town and proper engagement with local communities - solicitors, government agencies, etc.	NSW Department of Health Maari Ma Health Aboriginal Corporation NSW Aboriginal Housing Office NSW Department of Aboriginal Affairs Royal Flying Doctor Service

	NSW National Parks and Wildlife Service Far West Community Legal Centre Murdi Paaki Regional Assembly
Expand accommodation at Wilcannia hospital for patients and Elders	NSW Department of Health Maari Ma Health Aboriginal Corporation
Develop a range of local support programs for men and re-establish the men's hub	

**COMMUNITY PRIORITY – SERVICES AND FACILITIES FOR CHILDREN AND YOUNG PEOPLE**

IMPROVEMENT PRIORITIES	ACCOUNTABILITIES
Improve and expand local services for children and young people	NSW Department of Family and Community Services NSW Department of Aboriginal Affairs National Indigenous Australians Agency NSW Department of Health Maari Ma Health Aboriginal Corporation Catholic Care Uniting Care Central Darling Shire Council
Structure the local drop-in centre to cater for all age groups through the provision of games and exercise equipment, after-school activities and school holiday programs	Maari Ma Health Aboriginal Corporation
Provide more night activities for children and young people such as movie nights and blue light disco	Maari Ma Health Aboriginal Corporation
Develop more options to keep young people, our kids in the community - not forced to leave for education and job opportunities	NSW Department of Education and Training NSW Department of Aboriginal Affairs TAFE NSW
Create more opportunities for young people to live independently and learn life skills	NSW Department of Family and Community Services NSW Department of Aboriginal Affairs NSW Aboriginal Housing Office Wilcannia Local Aboriginal Land Council Murdi Paaki Regional Housing Corporation Mid Lachlan Aboriginal Housing Co-op
Improve and expand local services for children and young people	NSW Department of Family and Community Services NSW Department of Aboriginal Affairs National Indigenous Australians Agency NSW Department of Health Maari Ma Health Aboriginal Corporation

	Catholic Care Uniting Care Central Darling Shire Council
--	--

COMMUNITY PRIORITY – SERVICES AND FACILITIES FOR AN AGING POPULATION	
IMPROVEMENT PRIORITIES	ACCOUNTABILITIES
Develop local aged care facilities	NSW Department of Health Maari Ma Health Aboriginal Corporation Catholic Care Uniting Care
Establish local 'Healthy and Active' programs for elderly people	NSW Department of Health Maari Ma Health Aboriginal Corporation Catholic Care Uniting Care

COMMUNITY PRIORITY – LOCAL SPORT AND RECREATION	
IMPROVEMENT PRIORITIES	ACCOUNTABILITIES
Construct local multi-purpose a sport, recreation and youth centre	NSW Department of Sport and Recreation Central Darling Shire Council
Install shade measures and safety fencing at parks and play equipment with parks with appropriate height clearance	Central Darling Shire Council
Construct a local pump track	Central Darling Shire Council
Construct a water slide at the pool	Central Darling Shire Council
Rebuild and develop more local community sports including rugby league and touch football – big service providers should provide assistance with administration and co-ordination – e.g. first-aid kits from Maari Ma, admin support from police.	NSW Department of Sport and Recreation NSW Rugby League Maari Ma Health Aboriginal Corporation NSW Police
Engage local young people in planning and decision-making about sport and recreation facilities	NSW Department of Sport and Recreation Central Darling Shire Council
Design parks to be more reflective of local Aboriginal culture	Central Darling Shire Council



Provide a BBQ, canteen and shade trees at the swimming pool	Central Darling Shire Council
Construct new seating, toilets, an upgraded canteen and an exercise park at the sports ground	Central Darling Shire Council

### COMMUNITY PRIORITY – COMMUNITY EVENTS

IMPROVEMENT PRIORITIES	ACCOUNTABILITIES
Develop ongoing community events and discussions to build community pride, celebrate Aboriginal culture and improve the reputation of the town	Wilcannia Local Area Land Council Murdi Paaki Regional Assembly and Wilcannia Community Working Party Central Darling Shire Council
Source funding to purchase and operate a community bus for community events, sorry business, etc.	Murdi Paaki Regional Assembly and Community Working Party Central Darling Shire Council

## FOCUS AREA 2. LOCAL AND REGIONAL GOVERNANCE



### COMMUNITY PRIORITY – SHIRE GOVERNANCE

IMPROVEMENT PRIORITIES	ACCOUNTABILITIES
Establish town councils to provide a community voice.	NSW Department of Planning, Industry and Environment – Office of Local Government NSW Audit Office Central Darling Shire Council Wilcannia Local Area Land Council Murdi Paaki Regional Assembly and Wilcannia Community Working Party

### COMMUNITY PRIORITY – ABORIGINAL COMMUNITIES' DECISION-MAKING AND REPRESENTATION

IMPROVEMENT PRIORITIES	ACCOUNTABILITIES
Work to overcome local differences and develop unity in prioritising and addressing local issues	Central Darling Shire Council Wilcannia Local Area Land Council Murdi Paaki Regional Assembly and Wilcannia Community Working Party
Improve communication channels and methods to inform and respond to local communities	Central Darling Shire Council Wilcannia Local Area Land Council Murdi Paaki Regional Assembly and Wilcannia Community Working Party
Establish local governance and control of funding and decision-making affecting Aboriginal communities	Central Darling Shire Council Wilcannia Local Area Land Council Murdi Paaki Regional Assembly and Wilcannia

	Community Working Party
Advocate for external decision-makers to visit the town and Shire regularly to properly understand local issues including education, employment, housing and health	Central Darling Shire Council Wilcannia Local Area Land Council Murdi Paaki Regional Assembly and Wilcannia Community Working Party
Increase Aboriginal representation on Wilcannia Tourism Committee	Wilcannia Tourism Committee
Develop a reconciliation action plan for Council	Central Darling Shire Council
Ensure that shire governance systems include equal representation of Aboriginal and white representatives	NSW Office of Local government Central Darling Shire Council Wilcannia Local Area Land Council Murdi Paaki Regional Assembly and Wilcannia Community Working Party

### FOCUS AREA 3. NATURAL ENVIRONMENT



COMMUNITY PRIORITY – THE BAAKA	
IMPROVEMENT PRIORITIES	ACCOUNTABILITIES
Ensure Aboriginal communities in Wilcannia have ongoing access to cultural water	Water NSW NSW Department of Planning, Industry and Environment Murray Darling Basin Authority

### FOCUS AREA 4. LOCAL ECONOMY



COMMUNITY PRIORITY – EMPLOYMENT	
IMPROVEMENT PRIORITIES	ACCOUNTABILITIES
Create more local opportunities and set targets for appropriate skills development, training and jobs to build career opportunities for young people	NSW Department of Education and Training Regional Development Australia Wilcannia Local Aboriginal Land Council Murdi Paaki Regional Assembly Central Darling Shire Council TAFE NSW REDI.E
Employ more local people on local projects and maintenance	NSW Aboriginal Housing Office Wilcannia Local Aboriginal Land Council Murdi Paaki Regional Housing Corporation Mid Lachlan Aboriginal Housing Co-op REDI.E Central Darling Shire Council

Provide assistance to people in setting up local businesses	National Indigenous Australians Agency TAFE NSW Destination Country and Outback NSW Murdi Paaki Regional Assembly
Create more opportunities for Aboriginal people to work for the Shire	Central Darling Shire Council

COMMUNITY PRIORITY – ACCESS TO FRESH PRODUCE AND RETAIL CHOICES	
IMPROVEMENT PRIORITIES	ACCOUNTABILITIES
Expand local retail options and access to fresh produce	National Indigenous Australians Agency Regional Development Australia Murdi Paaki Regional Assembly

## FOCUS AREA 5. RURAL AND URBAN LAND USE



COMMUNITY PRIORITY – GREENING AND BEAUTIFICATION OF TOWNS	
IMPROVEMENT PRIORITIES	ACCOUNTABILITIES
Improve town entrances and work with local communities to design local welcome and acknowledgement of Country	Central Darling Shire Council
Provide more street trees in urban areas for shade, climate control, dust minimisation and beautification of the town	Central Darling Shire Council

## FOCUS AREA 6. INFRASTRUCTURE AND SERVICES



COMMUNITY PRIORITY – DRINKING WATER	
IMPROVEMENT PRIORITIES	ACCOUNTABILITIES
Improve water flow and quality in the river	Water NSW NSW Department of Planning, Industry and Environment Murray Darling Basin Authority NSW Department of Primary Industries
Improve the quality of local drinking water to ensure it meets Australian Drinking Water Standards	Water NSW NSW Department of Planning, Industry and Environment Central Darling Shire Council

COMMUNITY PRIORITY – LOCAL AND REGIONAL ROADS	
IMPROVEMENT PRIORITIES	ACCOUNTABILITIES
Develop and implement road safety and traffic calming measures to slow traffic and increase pedestrian safety in the urban area.	Central Darling Shire Council Transport for NSW
Extend 50km/h zones on main roads in town	Central Darling Shire Council Transport for NSW
Construct a bus turning circle in Warrali Ave at the Mission	Wilcannia Local Aboriginal Land Council Central Darling Shire Council

COMMUNITY PRIORITY – LOCAL SERVICES	
IMPROVEMENT PRIORITIES	ACCOUNTABILITIES
Provide a seven-day bus service to Broken Hill	Transport for NSW
Extend and improve local footpaths and kerb and gutter throughout the town	Central Darling Shire Council
Relocate the sewer system at the Mission to alleviate the unpleasant smells and address frequent system blockages	Central Darling Shire Council
Provide more frequent cleaning of local parks and playgrounds	Central Darling Shire Council
Install more street lights along footpaths including to the Mission and the Mallee	Central Darling Shire Council
Improve the quality of the old foot bridge to the Mission for safety and for tourists	Central Darling Shire Council
Improve cemetery facilities to include shade areas, BBQ facilities, tables and seating, drinking water, solar lighting, gardening taps and improved toilets and road realignment	Central Darling Shire Council
Install water bubblers in urban areas	Central Darling Shire Council
Upgrade local bus shelters to provide more shade for kids	Central Darling Shire Council
Upgrade and improve playing surfaces and/or amenities at the golf course, tennis courts, cricket pitch and bowling green	Central Darling Shire Council



## CONTACT US:

Central Darling Shire Council

PO Box 165

WILCANNIA NSW 2836

(08) 8083 8900

[centraldarling.nsw.gov.au](http://centraldarling.nsw.gov.au)