

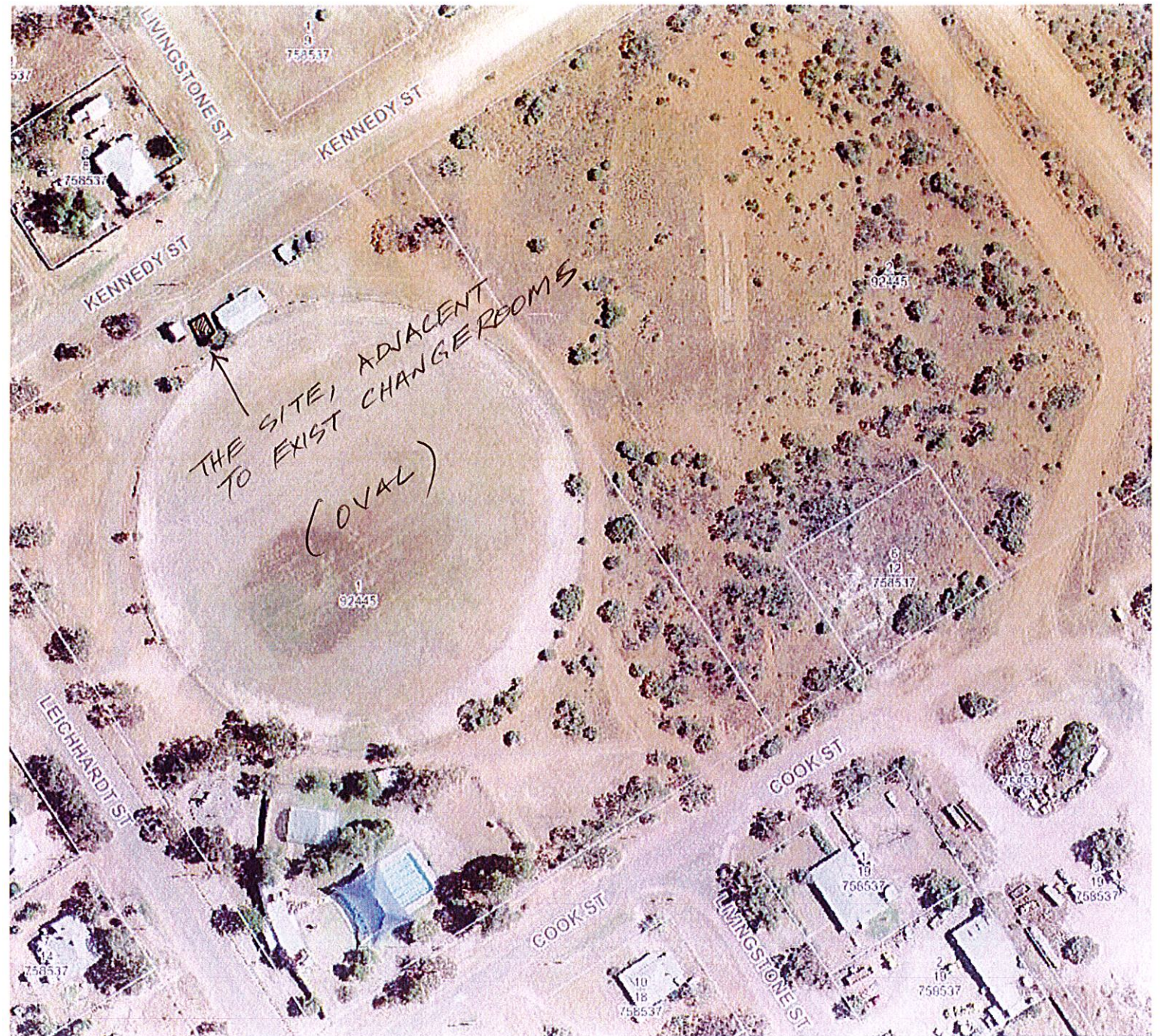
CENTRAL DARLING SHIRE COUNCIL

PROPOSED CANTEEN WITH AMENITIES, SAHARA OVAL LOT1, DP 92445, LEICHARDT ST.

IVANHOE, FLOOR PLAN. 1:100

SHEET 1 OF 5.





DIFF RATE VG PROP ID PROPERTY NAME

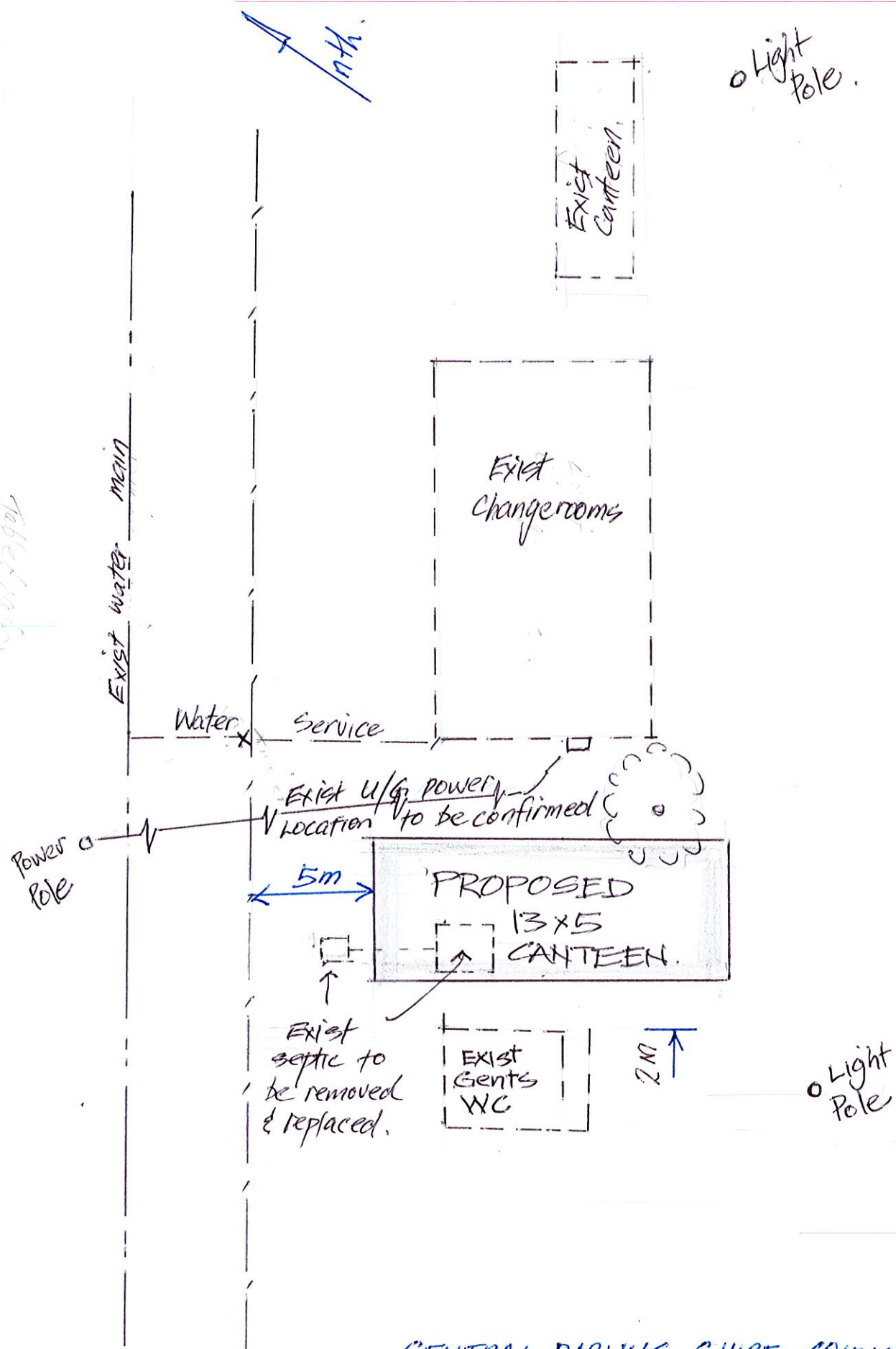
# Central Darling Shire Council Geographic Information System

LOCALITY DIAG, SHEET 2 OF 5

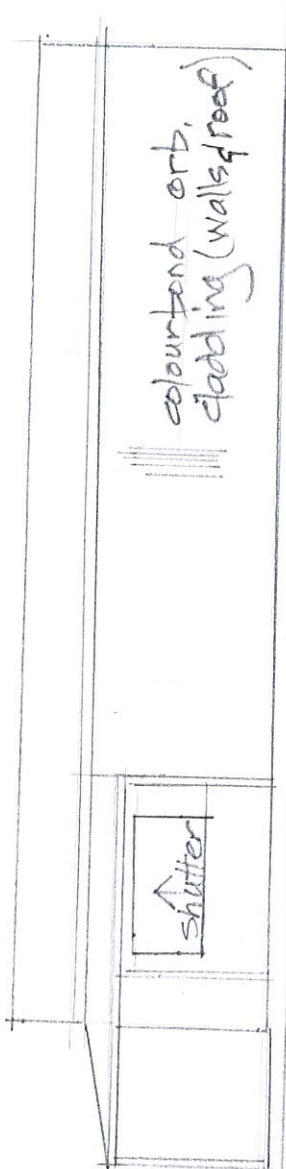


Edge of bitumen Kennedy St

Tabbed mark



CENTRAL DARLING SHIRE COUNCIL  
 PROPOSED CANTEEN - SITE PLAN.  
 Scale 1:200 SHEET 3 OF 5.



colourbond orb.  
cladding (walls & roof)

shutter

TYPICAL SIDE ELEVATION 1:100

20°

termite treat radiata  
Fill framing to Astal.

20mm pine struct.  
floor over  
duragal steel subfloor

modwood  
decking over  
duragal frame

subfloor  
clearance  
as per code

2M long  
screw piles  
to safe bearing  
with adjust. bearer plates (TYP.)

SECTION A-A  
1:50.

PROPOSED CANTENEN - SECTION / ELEVATION (TYP.)  
SHEET 4 OF 5

# PROPOSED CANTEN AND AMENITIES SAHARA OVAL IVANHOE.

## Documentation - brief specification

All "duragal" steel sub-floor frames 13500mm x 4500mm complete with two 13.5m 25025UB bearers at 3000 centres.

**Separate 1800mm wide skillion roof front verandah/porch bolted to front server elevation.**

22mm thick waterproof and termite proof T & G pyneboard flooring throughout building.

**"Reflecta-Foil" sub-floor insulation throughout entire building.**

90mm Pinus radiata timber wall and roof frames to the BCA and termite protected.

Steel roof and ceiling battens or termite treated timber.

Colorbond steel fascia, gutter, colorbond corrugated iron roof cladding. flashings and fixings together with 90mm outlets ready to connect to stormwater. *by plumber.*

Lysaght corrugated colorbond cladding

**Villaboard FC internal linings throughout entire building.**

Powder coated aluminium sliding windows complete with flyscreens.

**4 powder coated roll-a-shutters to the server area.**

Custom wood internal skirting, jambs, architraves and trims.

Hollow core "prime coat" doors throughout.

Stainless steel door furniture including external entrance lock sets.

**13.5LM of stainless-steel work and server benches to the front of the building complete with separate stainless steel hand wash facilities.**

**Small fully laminated kitchen cupboard complete with stainless steel sink adjacent dry store entry.**

Complete plumbing installation including instantaneous gas HWS, hand wash tapware, stainless steel deep sinks and all water pipes completed to one connection point, all stormwater completed to ground level and all sewer pipes dropped through the floor 70mm ready for connection to *new awts, serving both canteen and exist toilet.*

Complete electrical installation including the provision of circuit board to internal wall where metered power is to be connected, )

**Dry store complete with laminated shelving to the entire perimeter of the room.**

**Disabled compliant toilet compartment complete with disabled toilet suite, disabled hand basin and shelf with mirror over, TRH, coat hooks, grab rails and toilet back rest.**

**One 5.0kW Daikin reverse cycle split system inverter airconditioner to server/work area.**

Small store adjacent rear door for consumables/equipment storage.

Tarkett welded sheet vinyl to entire building.

Painted throughout using Dulux premium paint to your desired colour scheme.

**Foundations to be eight only 2m long screw piles complete with steel adjustable bearing plates.**

PROPOSED CANTEN  
SHEET 5 of 5,