



PARKITECT®

**MODULAR
PUMPTRACK**



ASSEMBLY GUIDE

MODEL: V4 FIBREGLASS

LAYOUT: WORLD CUP



Manufacturer:

PARKITECT s.r.o.
Valašská Polanka 393
756 11 Valašská Polanka
IČ:27774406

Order number:

21 210 727



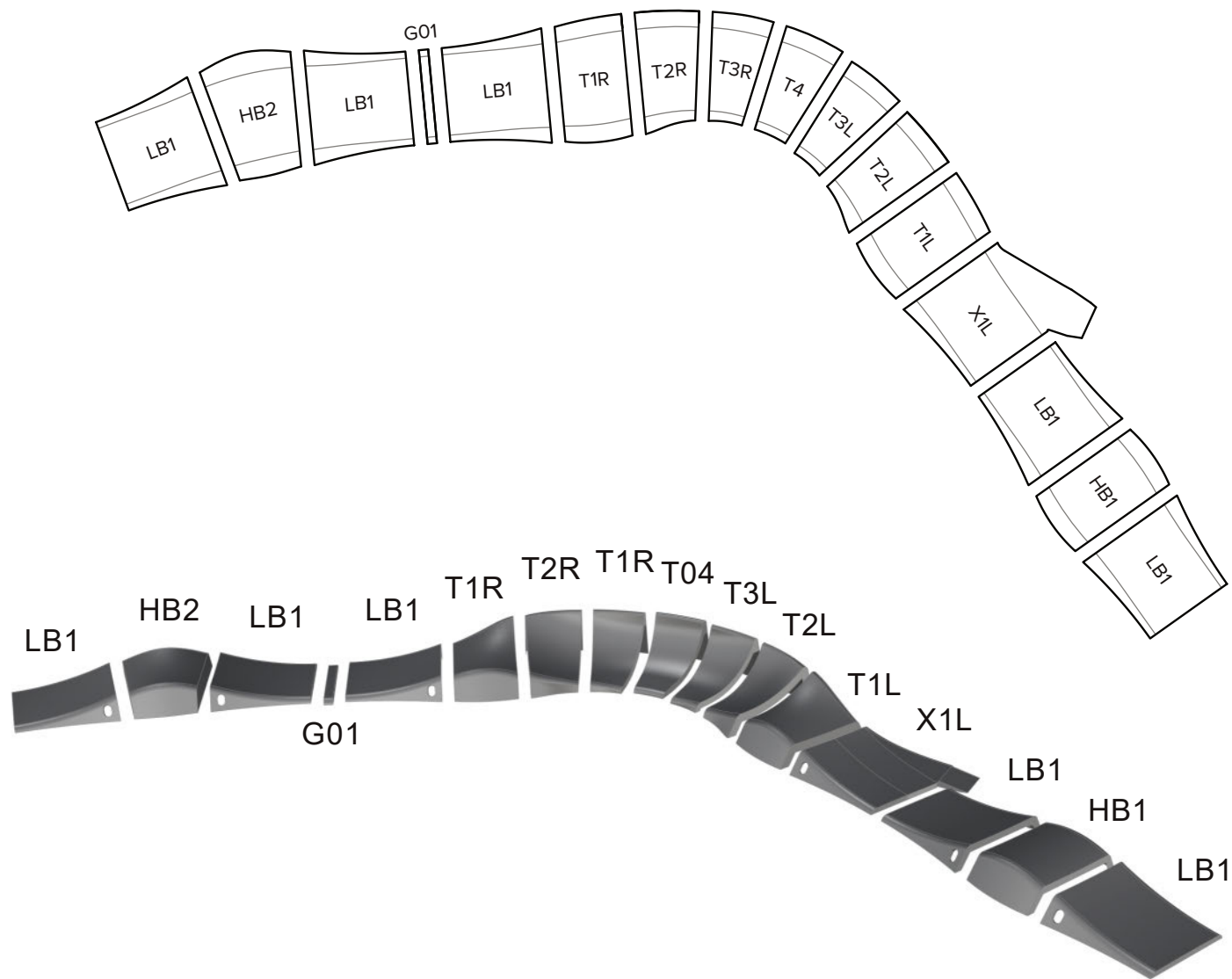
Content

- 1. The Modules
.....
- 2. Assembly Components
.....
- 3. Assembly Hardware
.....
- 4. Connection Details
.....
- 5. Perimeter Dimensions Including the Safety Zone
.....
- 6. Module Layout
.....
- 7. Assembly Procedure
.....
- 8. City Armour “CA” Components
.....



1. The Modules





Code | Description

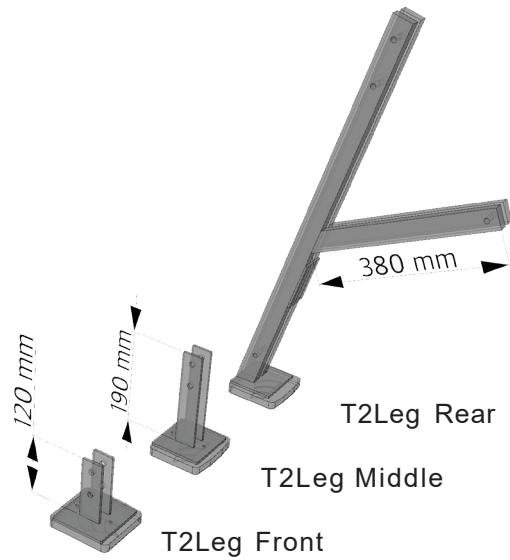
- T1R | Turn 1 Module Right
-
- T1L | Turn 1 Module left
-
- T2R | Turn 2 Module right
-
- T2L | Turn 2 Module left
-
- T3R | Turn 3 Module right
-
- T3L | Turn 3 Module left
-
- T4 | Turn 4 Module
-
- LB1 | Low Bump Module
-
- HB1 | High Bump 1 Module
-
- HB2 | High Bump 2 Module



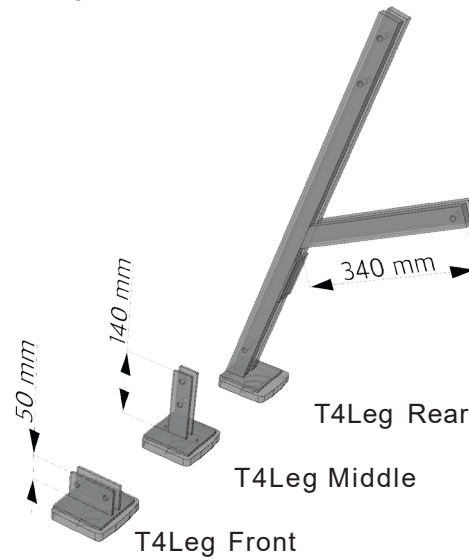
2. Assembly Components



Set of Legs for T2R/L to T3R/L connection



Set of Legs for T3R/L to T04 and T04 to T04 connection



CA Assembly Bracket for T1R/L modules



Universal Brace for Turn modules: T2R/L, T3R/L, T4



Components

Set of Legs for T2R/L to T3R/L connection

- T2 Leg Rear
- T2 Leg Middle
- T2 Leg Front

Set of Legs for T3R/L to T04 and T04 to T04 connection

- T4 Leg Rear
- T4 Leg Middle
- T4 Leg Front

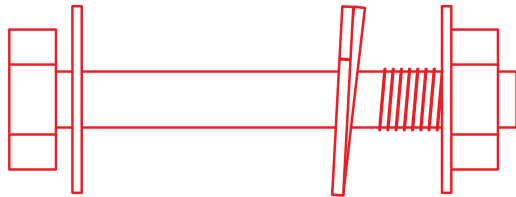
CA Assembly Bracket for T1R/L modules

Universal brace for turn modules: T2R/L, T3R/L, T4

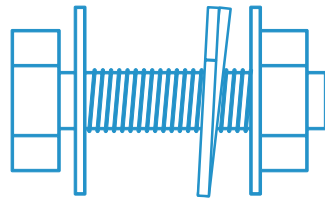


3. Assembly Hardware

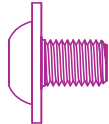




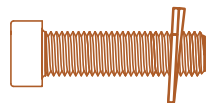
M10 x 80



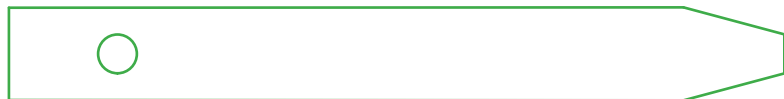
M10 x 55



M6 x 8



M6 x 30



Locator Pin

Components

- M10 x 80
- M10 x 55
- M6 x 8
- M6 x 30
- Locator Pin

Throughout this Assembly Guide the colour coded dotted lines show where the corresponding bolt size should be used



Tool list

	pcs
Wrench - size n.17	6
Hammer - rubber	1
Screwdriver Torx 30 - (assembly of CA)	2
Centering rod, \varnothing 8-10mm (or bigger screwdriver), (auxiliary fixation during assembly)	2
Cordless drill	1-2
Crowbar	2
Clamp (auxiliary fixation during assembly T2,T3,T4)	1-2
Hammer drill (fixation of T3,T4 to the surface)	1
Anchor bolts (dowels) - fixation to the surface/ground (not a part of the product)	depends on surface
Iron drill, \varnothing 4-5-6-8mm - pre-drilling of metal feet according to anchor bolts	2
Pads (wooden prisms)	4
Bit Torx 30	2
Laminate cutter (calibration of holes for CA)	1
Tap and die M6 (thread calibration for CA)	1
Measuring band 50m - exactness A	2
Spirit level 2m	1
Tools/accesories for flattening the surface	
Forklift	
Allen key - for M6 screw (4mm)	1

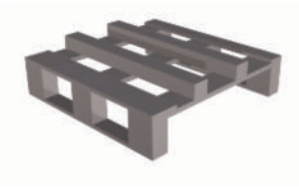
What do you need for installation?



4. Connection Details



LB1 + LB1



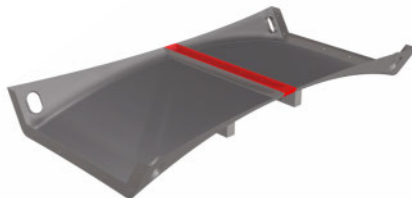
!! Fragile Corner !!

Be careful when you turn the modules over

LB1 + LB1



LB1 + GO1 + LB1



X1L + LB1



Low - Side LB1 to Low - Side LB1

The low side connection of the LB1 modules is done from the bottom.

Procedure:

1. Use a spare pallet and rubber packaging materials to adjust the height.
2. Carefully turn the modules upside down and lay the low side on the pallet

Note: the riding surface can be scratched and chipped. Always use something soft to protect the modules from contact with the ground and other hard objects

3. Align the modules to each other.
4. Starting from one side and working across to the other side, insert the bolts and partially tighten, check the riding surfaces are **FLUSH & ALIGNED**, now tighten all bolts.

5. Carefully turn the modules over paying attention not to damage the corners of the modules

You will need:

- 6x M10x 80

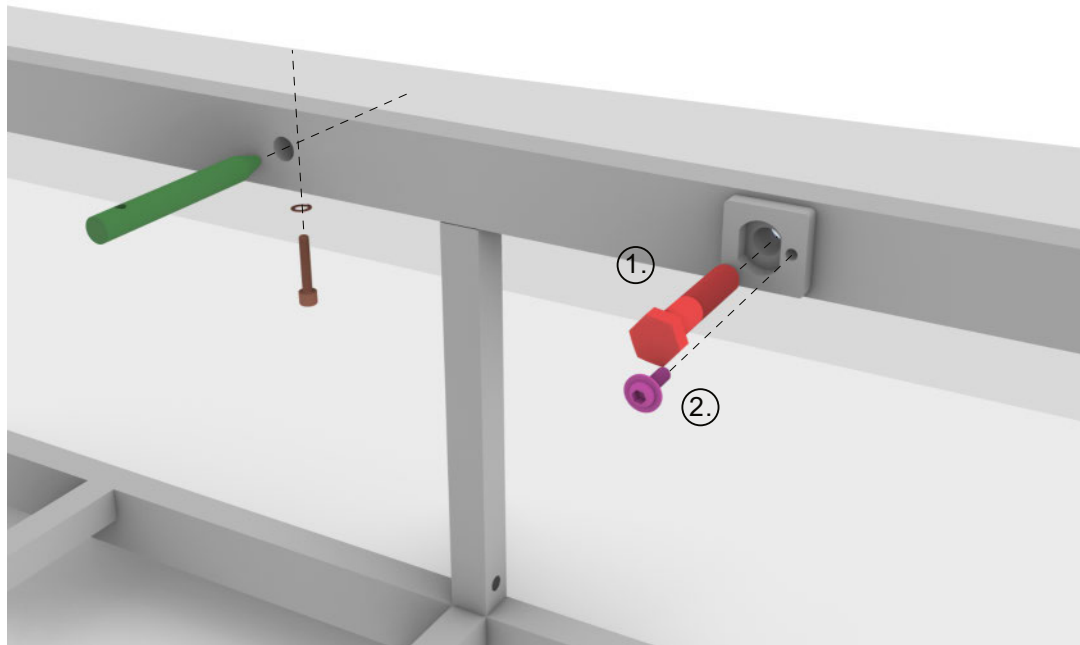
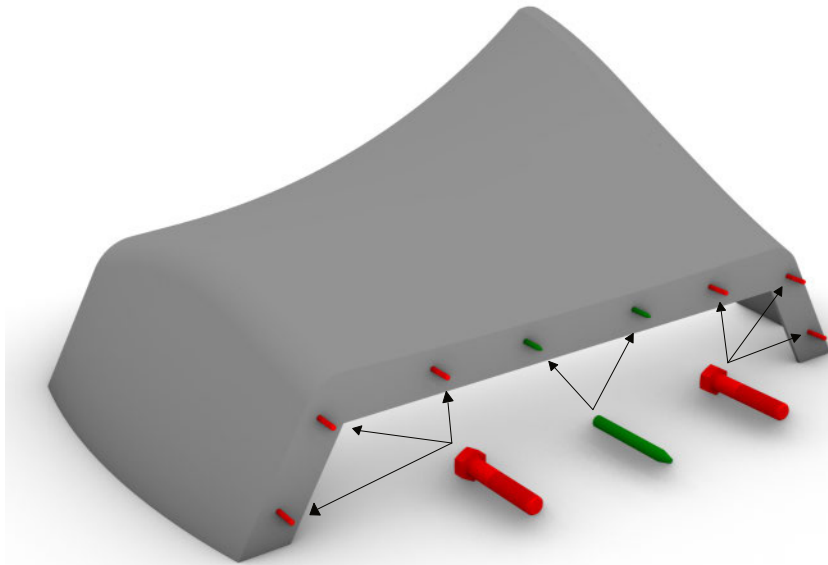


High-Side LB1 to HB1, HB2 and T1R/L

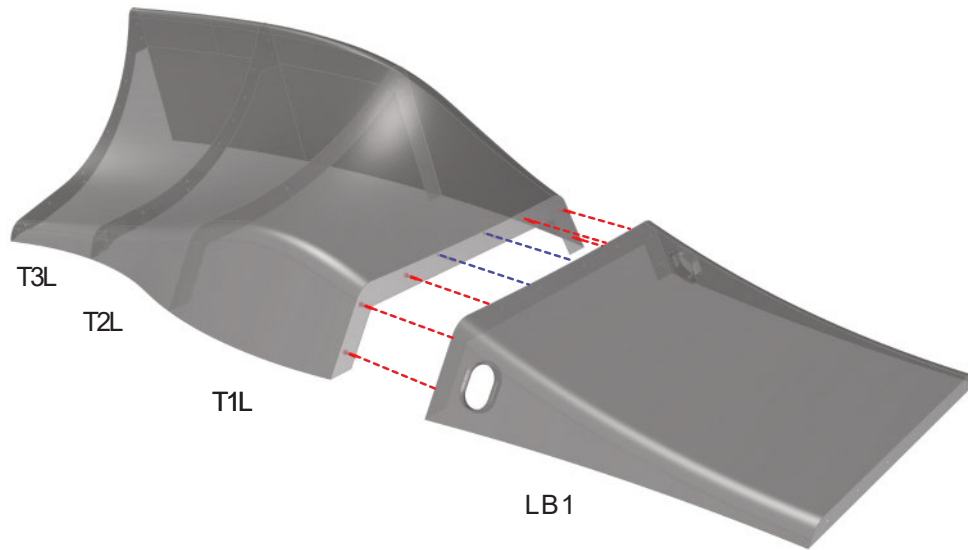
These modules are equipped with locator pins and a captured bolt system

Procedure:

1. Insert the locator pins and secure them in place with the fixing screw from the bottom
2. Insert the bolts and then secure them in place with the fixing screw from the inside



LB1 to T1L

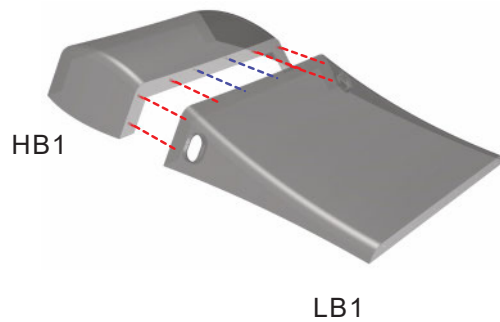


High-Side LB1 to HB1, HB2 and T1R/L

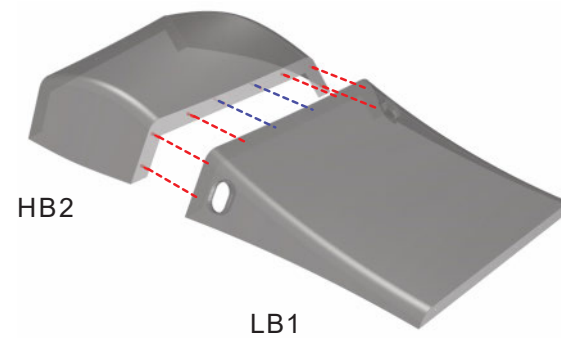
Procedure:

1. Prepare locator pins and captured bolts according to the diagram on the previous page.
2. Align the modules to each other
3. Reach through the access port on the side of the LB1 and tighten the assembly hardware

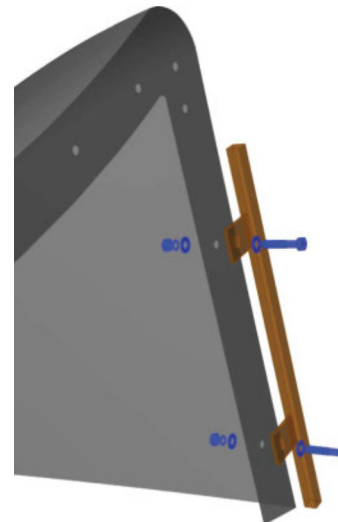
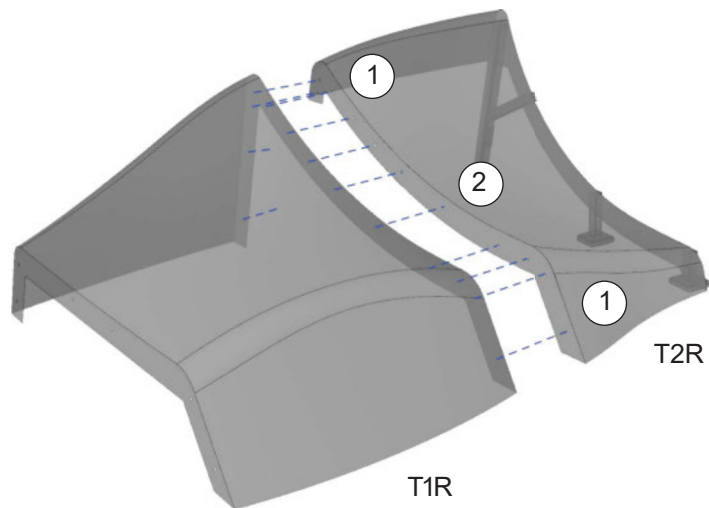
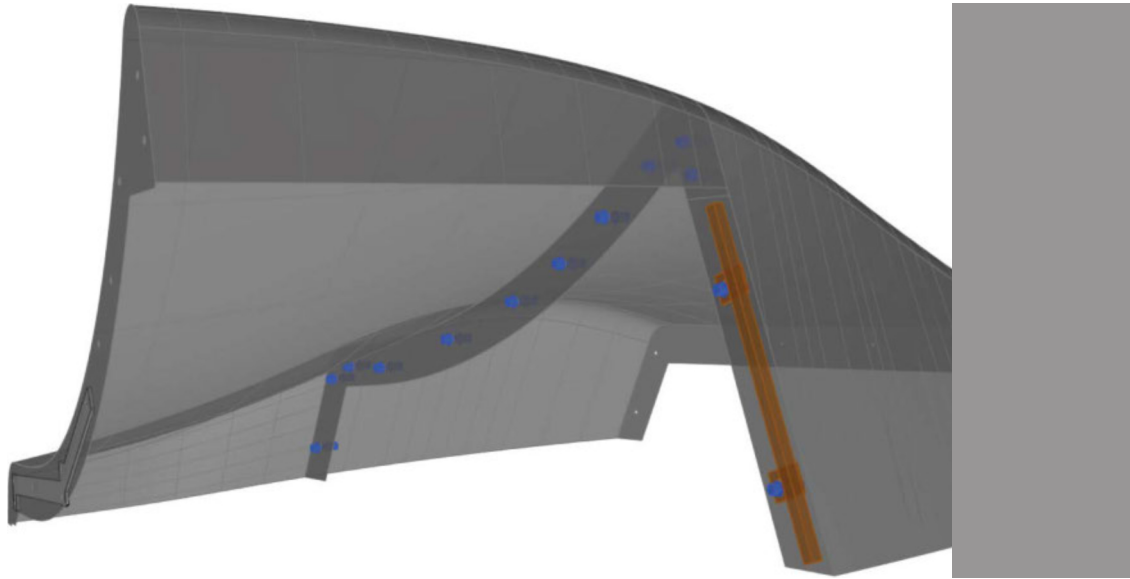
LB1 to HB1



LB1 to HB2



T1L/R to T2L/R



T1R/L to T2R/L

Procedure:

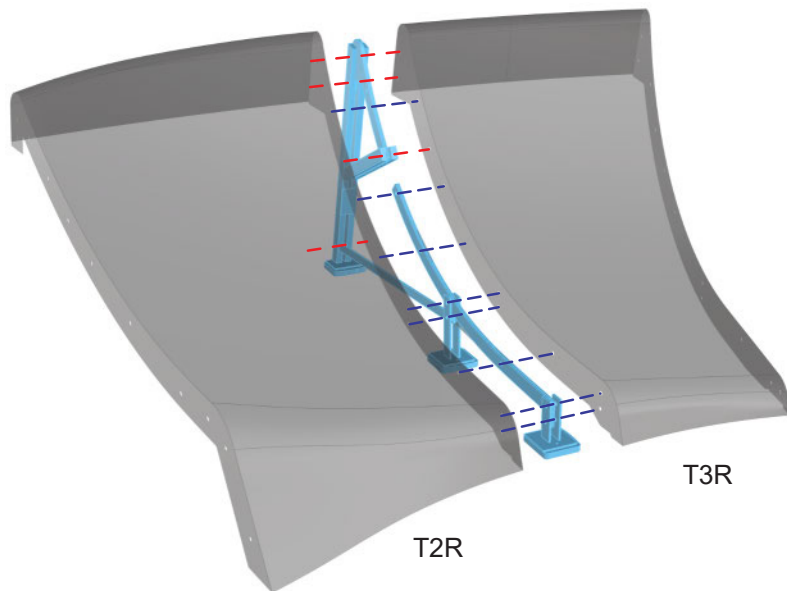
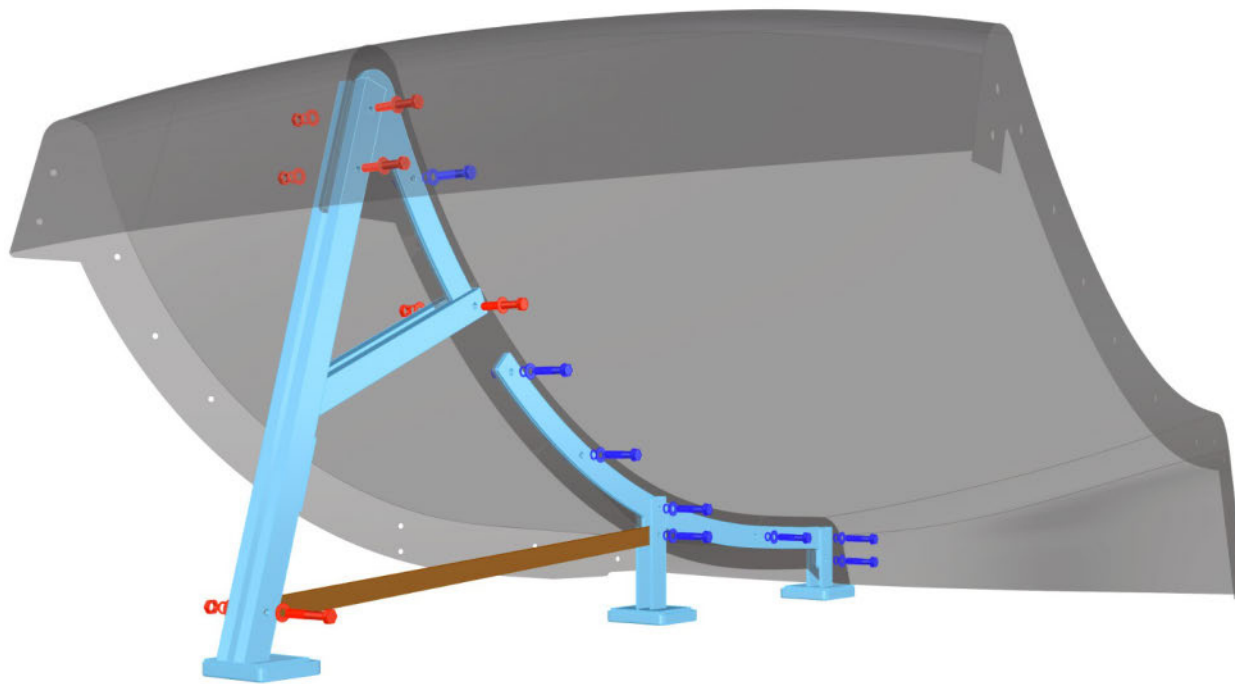
1. Insert and lightly tighten assembly hardware at position labeled "1"
.....
2. Insert and lightly tighten assembly hardware at position labeled "2"
.....
3. Align the modules to each other and tighten assembly hardware
.....
4. Attach the CA Assembly Bracket for T1R/L modules

You will need:

- 13x M10x55
- 1x CA Assembly Bracket for T1R/L modules



T02 to T03



T2R/L to T3R/L

Procedure:

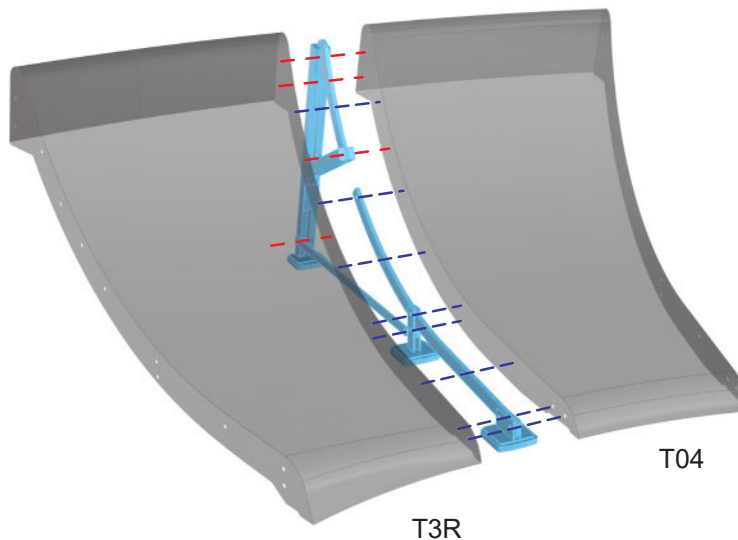
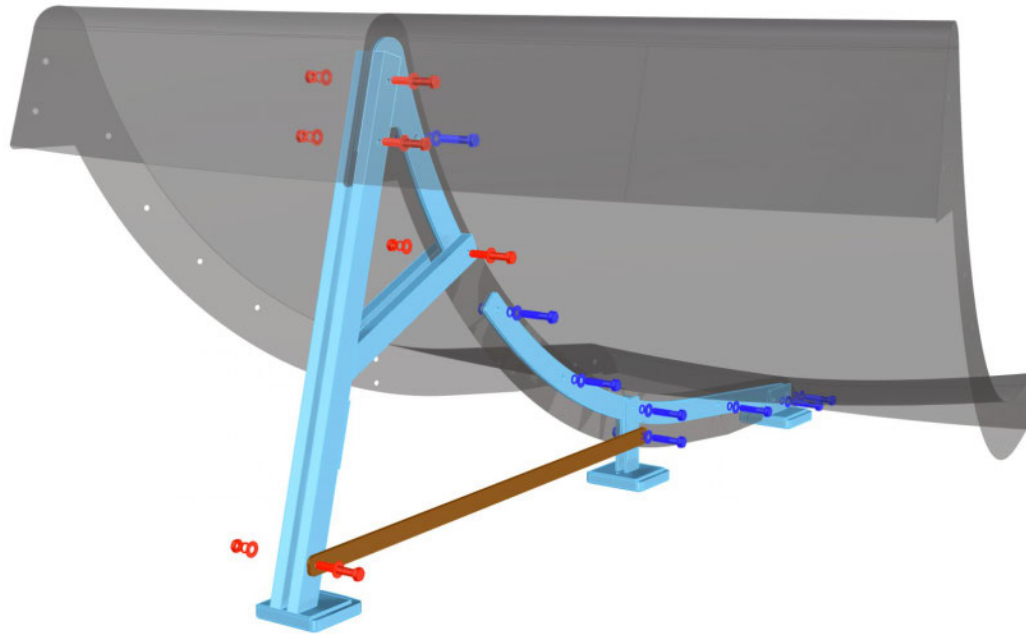
1. Align the modules to each other
2. Insert and tighten assembly hardware in locations without Legs
3. Attach the "T2 Leg Front" and lightly tighten the assembly hardware
4. Attach the "T2 Leg Middle" leaving the bottom hole empty and lightly tighten the assembly hardware
5. Attach the "T2 Leg Rear" with all assembly hardware
6. Attach the "Universal Brace" to the bottom holes of the "T2 Leg Middle" and the "T2 Leg Rear"
7. Check the alignment of the modules to each other and tighten all assembly hardware

You will need:

- 4x M10x 80
- 8x M10 x 55
- 1x Set of Legs for T2R/LtoT3R/L connection
- 1x Universal Brace for Turn modules: T2R/L, T3R/L, T4



T03 to T04



T3R/L to T04

Procedure:

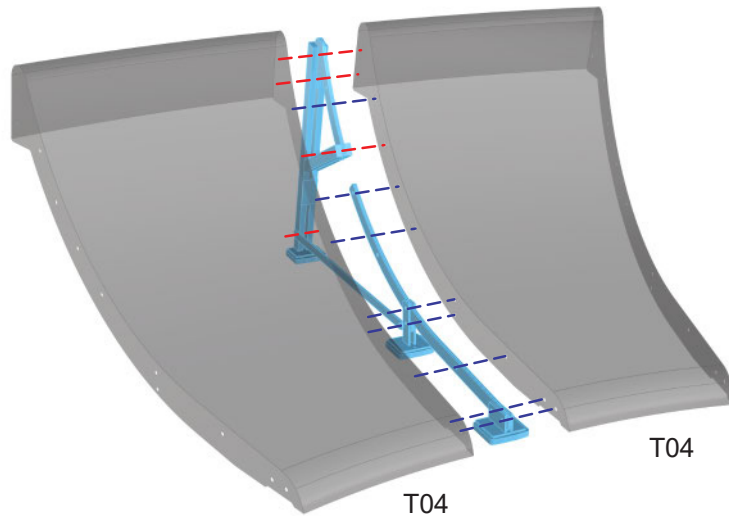
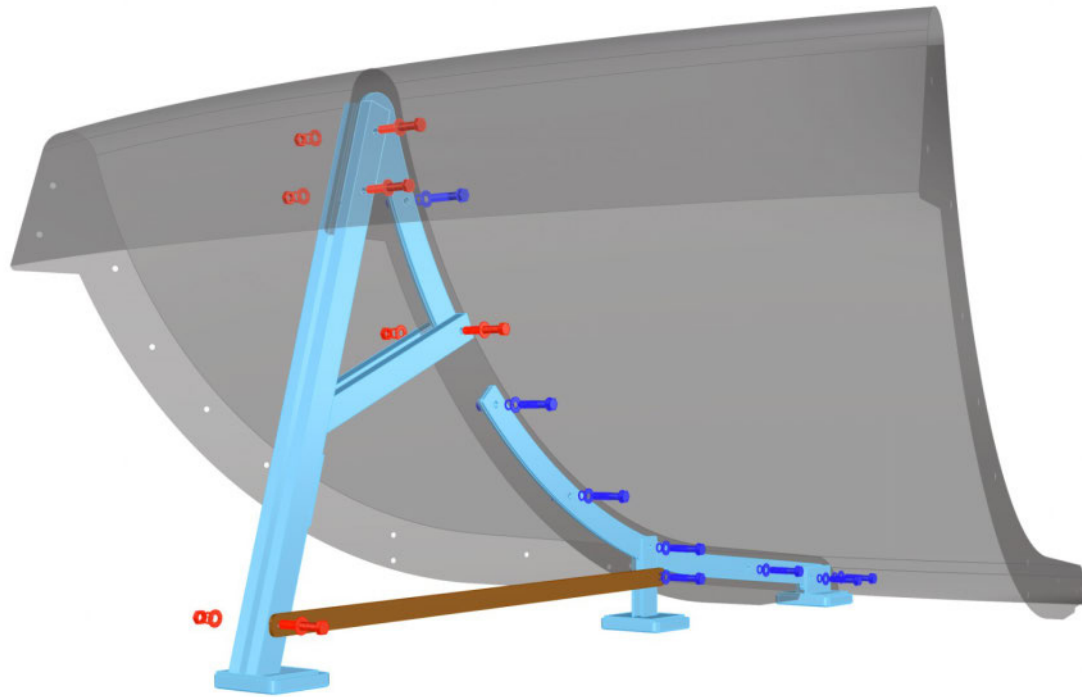
1. Align the modules to each other
2. Insert and tighten assembly hardware in locations without Legs
3. Attach the "T4 Leg Front" and lightly tighten the assembly hardware
4. Attach the "T4 Leg Middle" leaving the bottom hole empty and lightly tighten the assembly hardware
5. Attach the "T4 Leg Rear" with all assembly hardware
6. Attach the "Universal Brace" to the bottom holes of the "T4 Leg Middle" and the "T4 Leg Rear"
7. Check the alignment of the modules to each other and tighten all assembly hardware

You will need:

- 4x M10x 80
- 8x M10 x 55
- 1x Set of Legs for T04 to T04 connection
- 1x Universal Brace for Turn modules



T04 to T04



T04 to T04

Procedure:

1. Align the modules to each other
2. Insert and tighten assembly hardware in locations without Legs
3. Attach the "T4 Leg Front" and lightly tighten the assembly hardware
4. Attach the "T4 Leg Middle" leaving the bottom hole empty and lightly tighten the assembly hardware
5. Attach the "T4 Leg Rear" with all assembly hardware
6. Attach the "Universal Brace" to the bottom holes of the "T4 Leg Middle" and the "T4 Leg Rear"
7. Check the alignment of the modules to each other and tighten all assembly hardware

You will need:

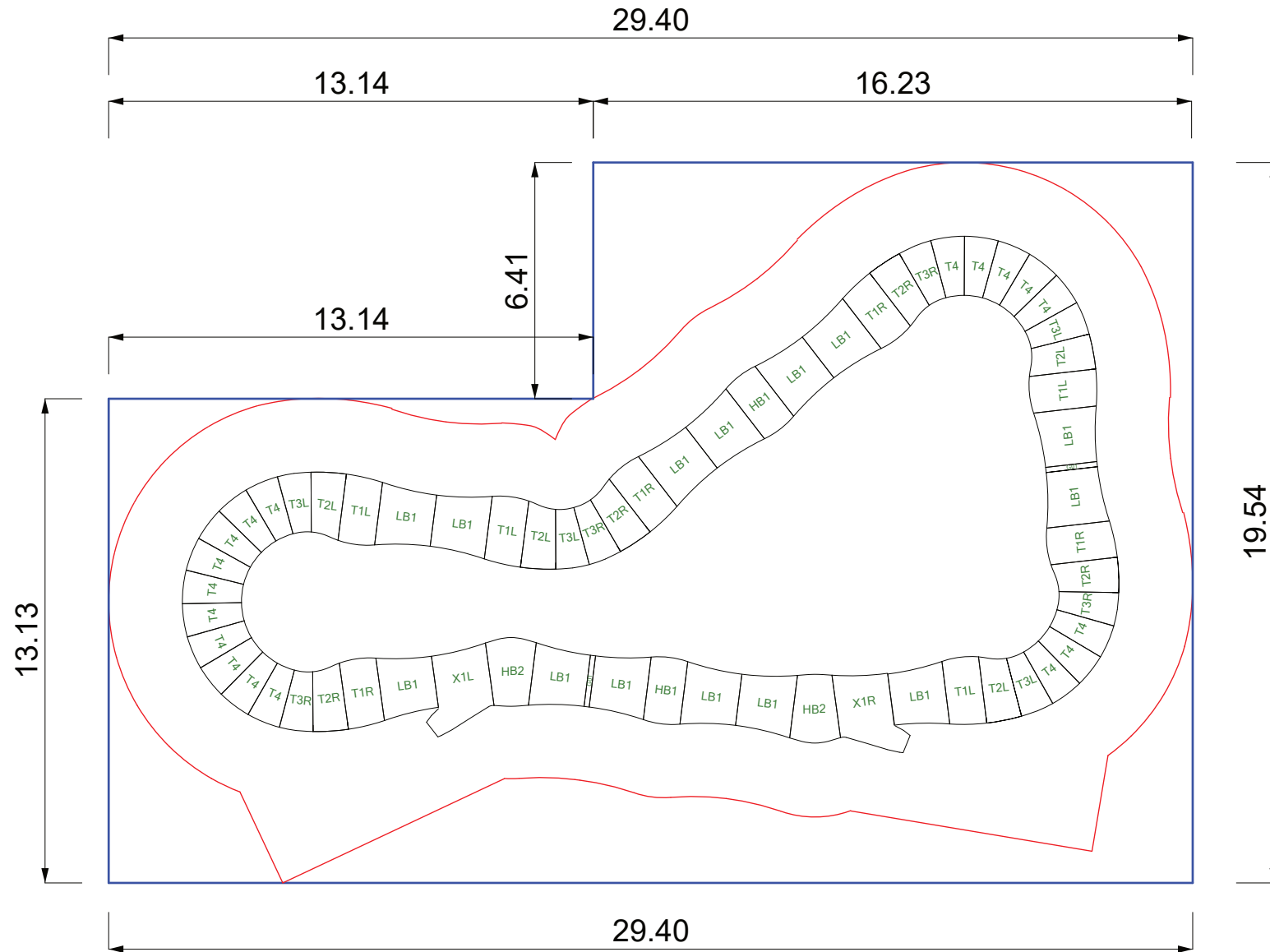
- 4x M10x 80
- 8x M10 x 55
- 1x Set of Legs for T04 to T04 connection
- 1x Universal Brace for Turn modules



5.
Perimeter
Dimensions
Including the
Safety Zone

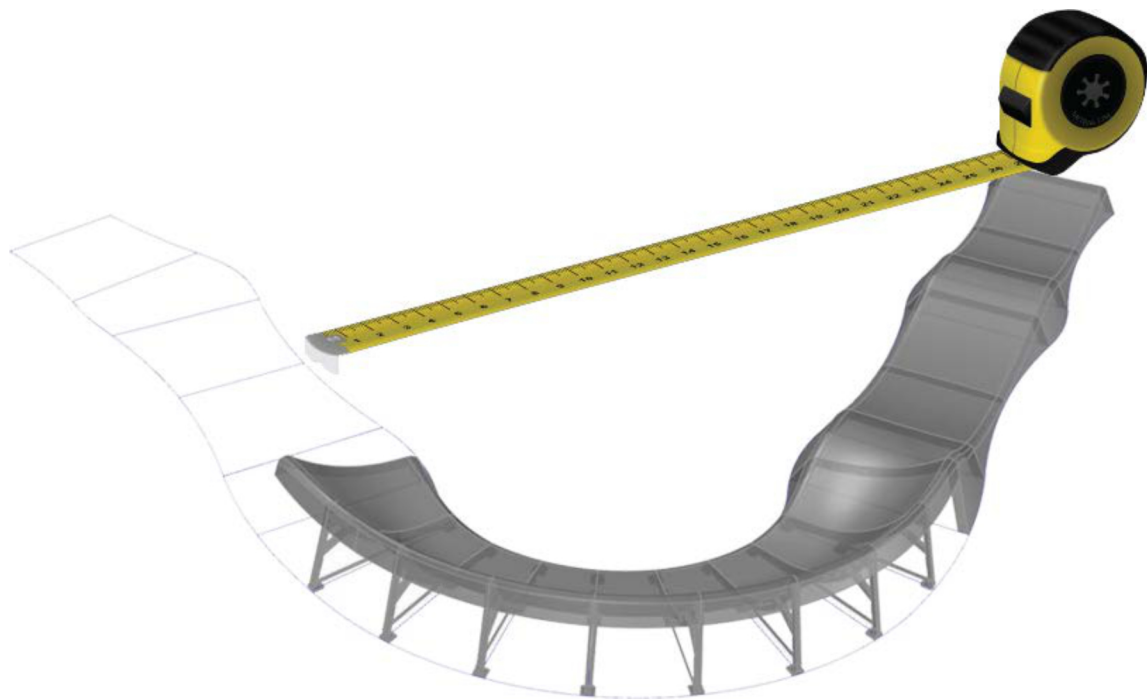


Site Layout and Perimeter Dimensions



6. Module Layout





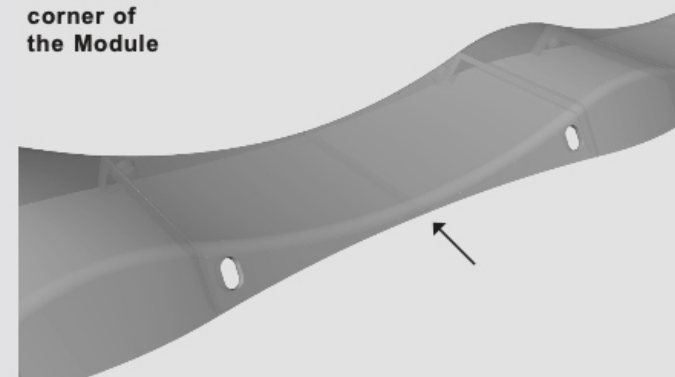
IMPORTANT READ BEFORE BEGINNING

.....

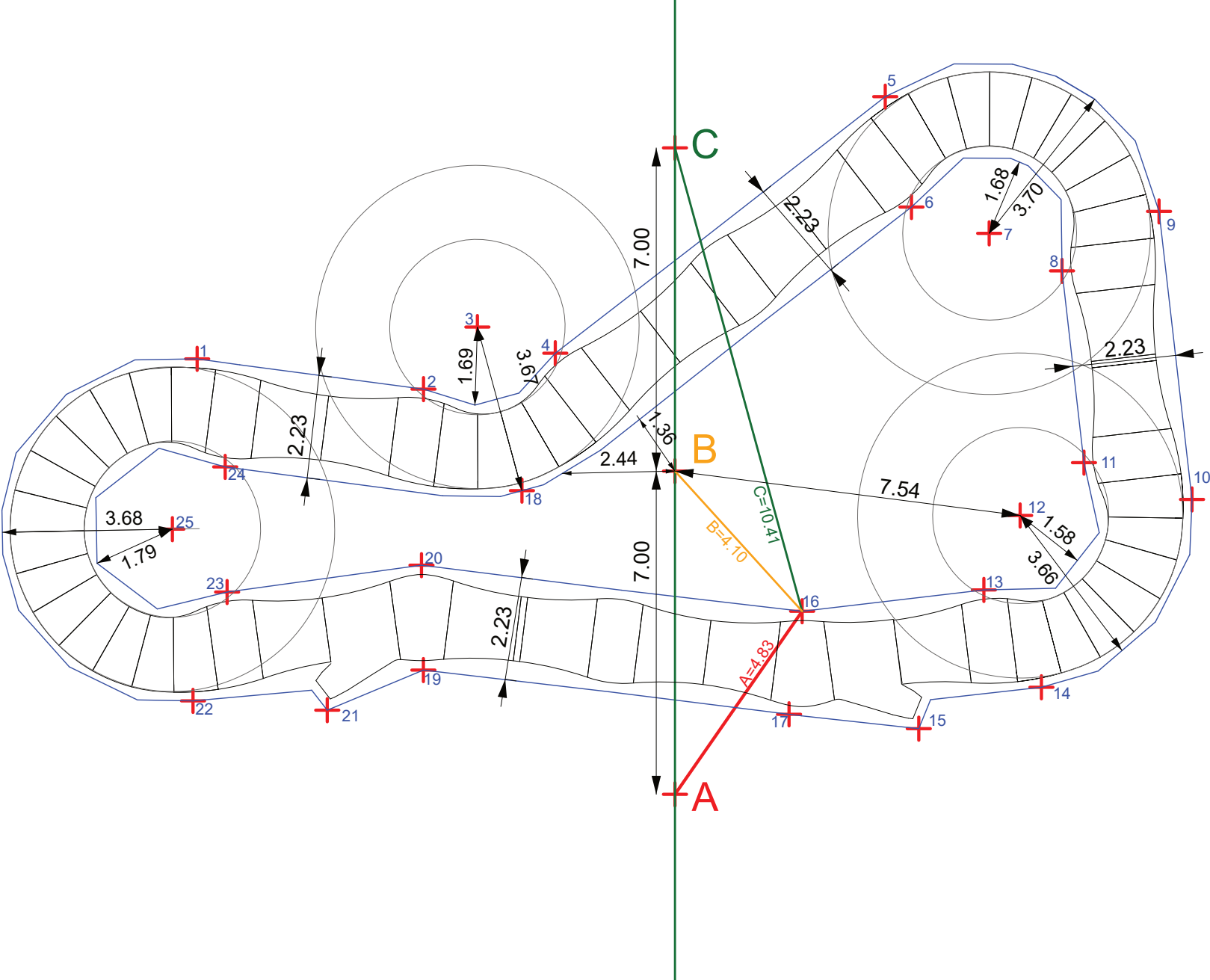
Regularly check the position of the modules relative to the layout plan and to each other.

Doing a good job with your layout can save hours of adjustments in the final stages of installation and the Final Connection.

Measure from the lowest corner of the Module



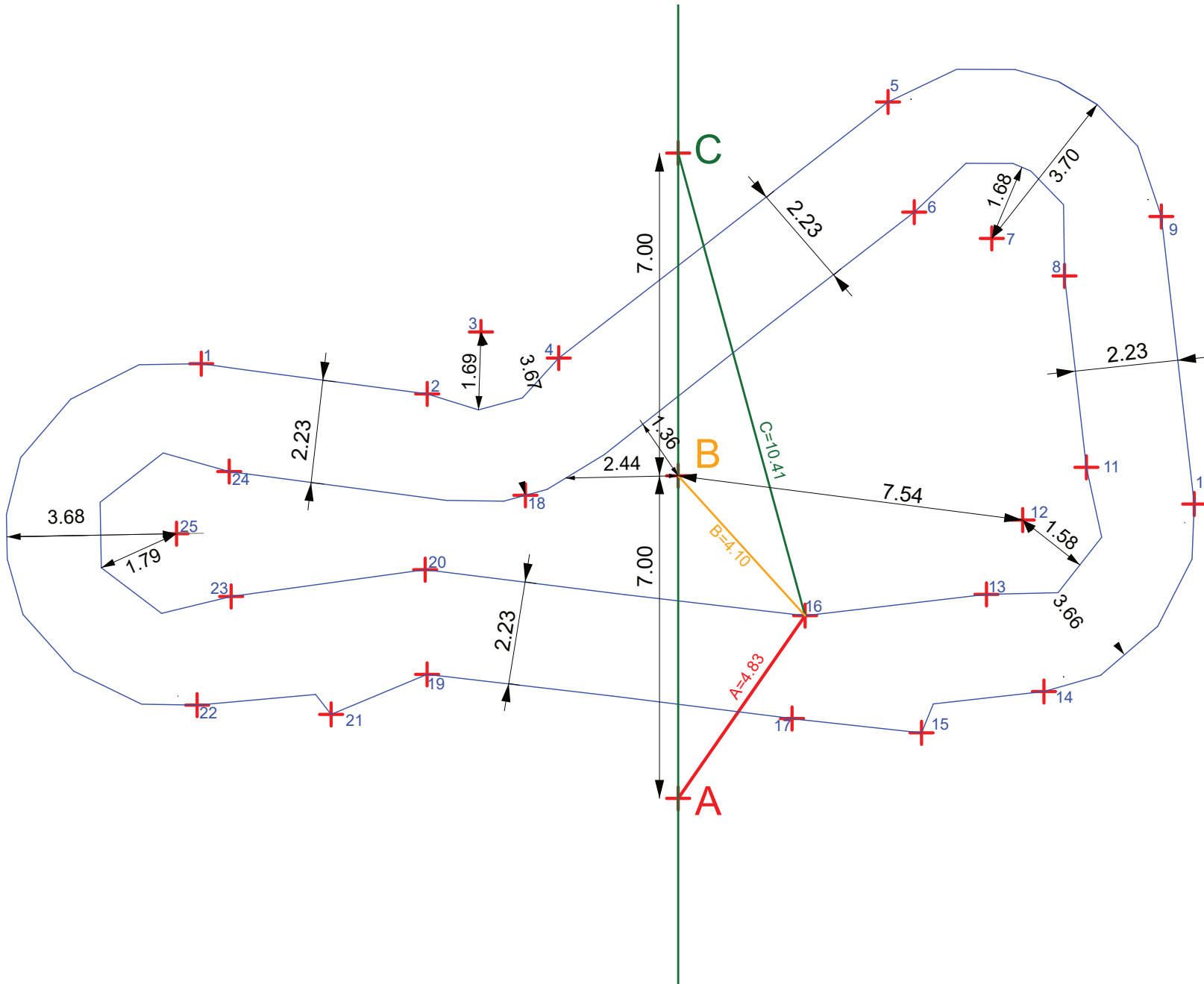
Foundation Plan



1	A=14.00	B=10.63	C=11.31
2	A=10.33	B=5.73	C=7.55
3	A=10.99	B=5.30	C=5.78
4	A=9.90	B=3.64	C=5.15
5	A=15.78	B=9.30	C=4.69
6	A=13.71	B=7.68	C=5.28
7	A=13.92	B=8.53	C=7.05
8	A=14.10	B=9.44	C=8.79
9	A=16.41	B=11.90	C=10.57
10	A=12.89	B=11.21	C=13.54
11	A=11.41	B=8.86	C=11.18
12	A=9.61	B=7.54	C=10.92
13	A=8.02	B=7.17	C=11.68
14	A=8.27	B=9.21	C=14.12
15	A=5.47	B=7.68	C=13.64
16	A=4.83	B=4.10	C=10.41
17	A=3.02	B=5.82	C=12.51
18	A=7.36	B=3.34	C=8.13
19	A=6.08	B=6.95	C=12.55
20	A=7.40	B=5.86	C=10.57
21	A=7.75	B=9.14	C=14.32
22	A=10.63	B=11.56	C=15.89
23	A=10.64	B=10.05	C=13.66
24	A=12.05	B=9.74	C=11.94
25	A=12.30	B=10.96	C=13.66



Foundation Plan



1	A=14.00	B=10.63	C=11.31
2	A=10.33	B=5.73	C=7.55
3	A=10.99	B=5.30	C=5.78
4	A=9.90	B=3.64	C=5.15
5	A=15.78	B=9.30	C=4.69
6	A=13.71	B=7.68	C=5.28
7	A=13.92	B=8.53	C=7.05
8	A=14.10	B=9.44	C=8.79
9	A=16.41	B=11.90	C=10.57
10	A=12.89	B=11.21	C=13.54
11	A=11.41	B=8.86	C=11.18
12	A=9.61	B=7.54	C=10.92
13	A=8.02	B=7.17	C=11.68
14	A=8.27	B=9.21	C=14.12
15	A=5.47	B=7.68	C=13.64
16	A=4.83	B=4.10	C=10.41
17	A=3.02	B=5.82	C=12.51
18	A=7.36	B=3.34	C=8.13
19	A=6.08	B=6.95	C=12.55
20	A=7.40	B=5.86	C=10.57
21	A=7.75	B=9.14	C=14.32
22	A=10.63	B=11.56	C=15.89
23	A=10.64	B=10.05	C=13.66
24	A=12.05	B=9.74	C=11.94
25	A=12.30	B=10.96	C=13.66



7. Assembly Procedure



8.
City Armour
“CA”
Components



City Armour "CA" Components and Covers

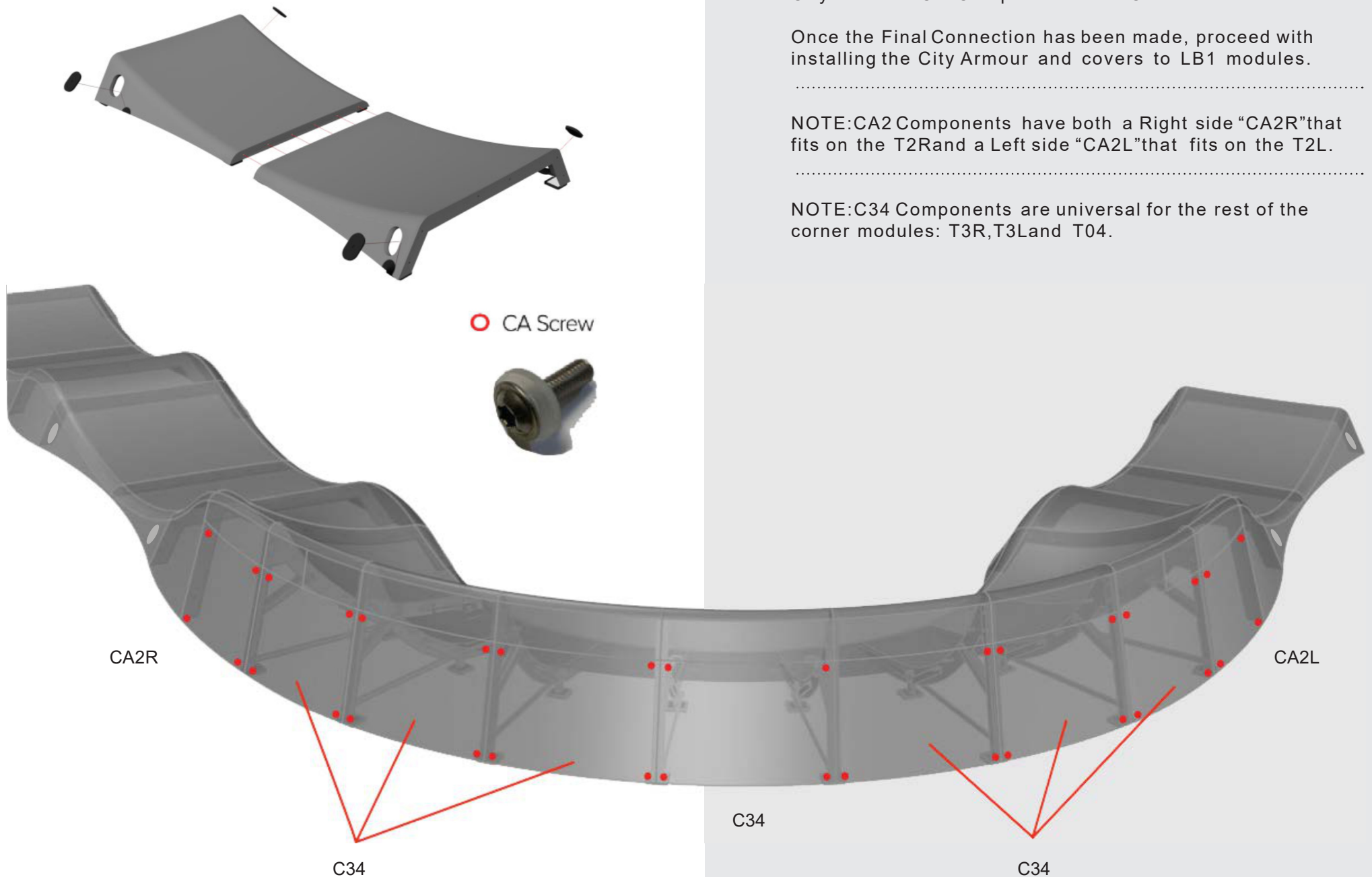
Once the Final Connection has been made, proceed with installing the City Armour and covers to LB1 modules.

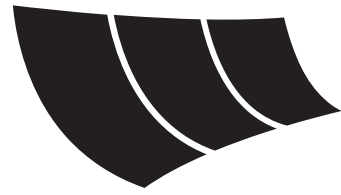
.....

NOTE: CA2 Components have both a Right side "CA2R" that fits on the T2R and a Left side "CA2L" that fits on the T2L.

.....

NOTE: C34 Components are universal for the rest of the corner modules: T3R, T3L and T04.





PARKITECT®