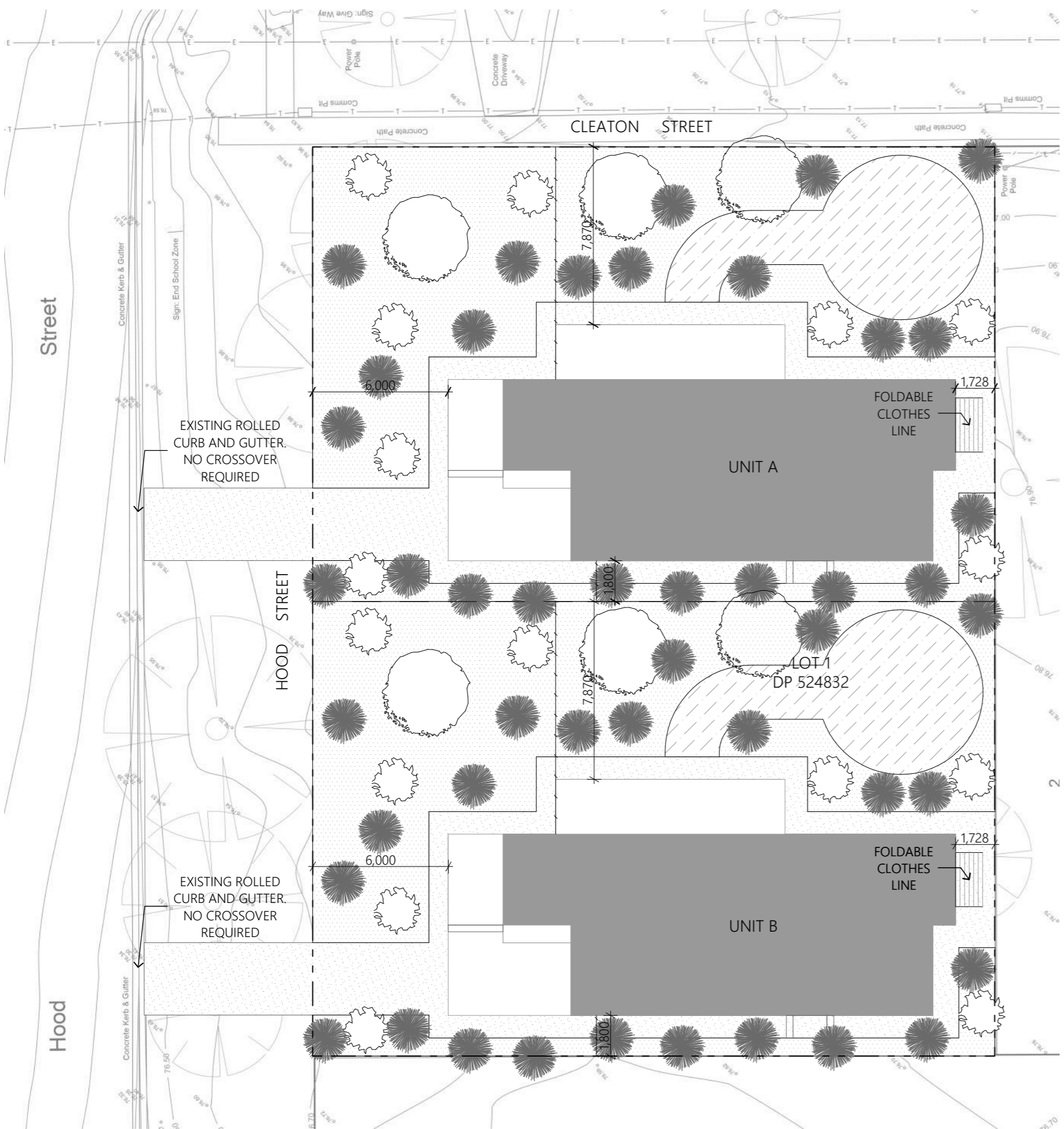




SITE PLAN
1:200



LANDSCAPE PLAN
1:200

- LEGEND**
- CRUSHED GRANITE
 - CONCRETE
 - BARK CHIP
 - FOUNTAIN GRASS
(Pennisetum alopecuroides)
 - BOXWOOD
(buxus spp)
 - DUNDAS MAHOGANY
(Eucalyptus brockwayi)



DUNDAS MAHOGANY
(Eucalyptus brockwayi)



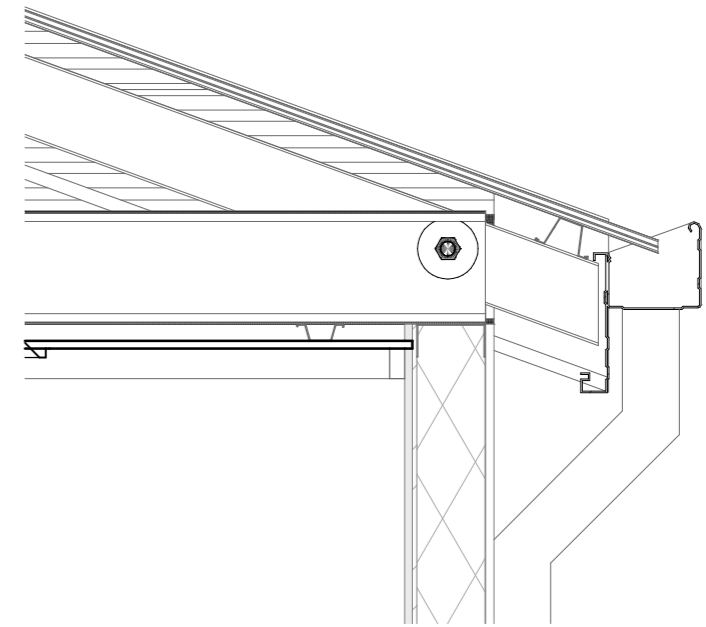
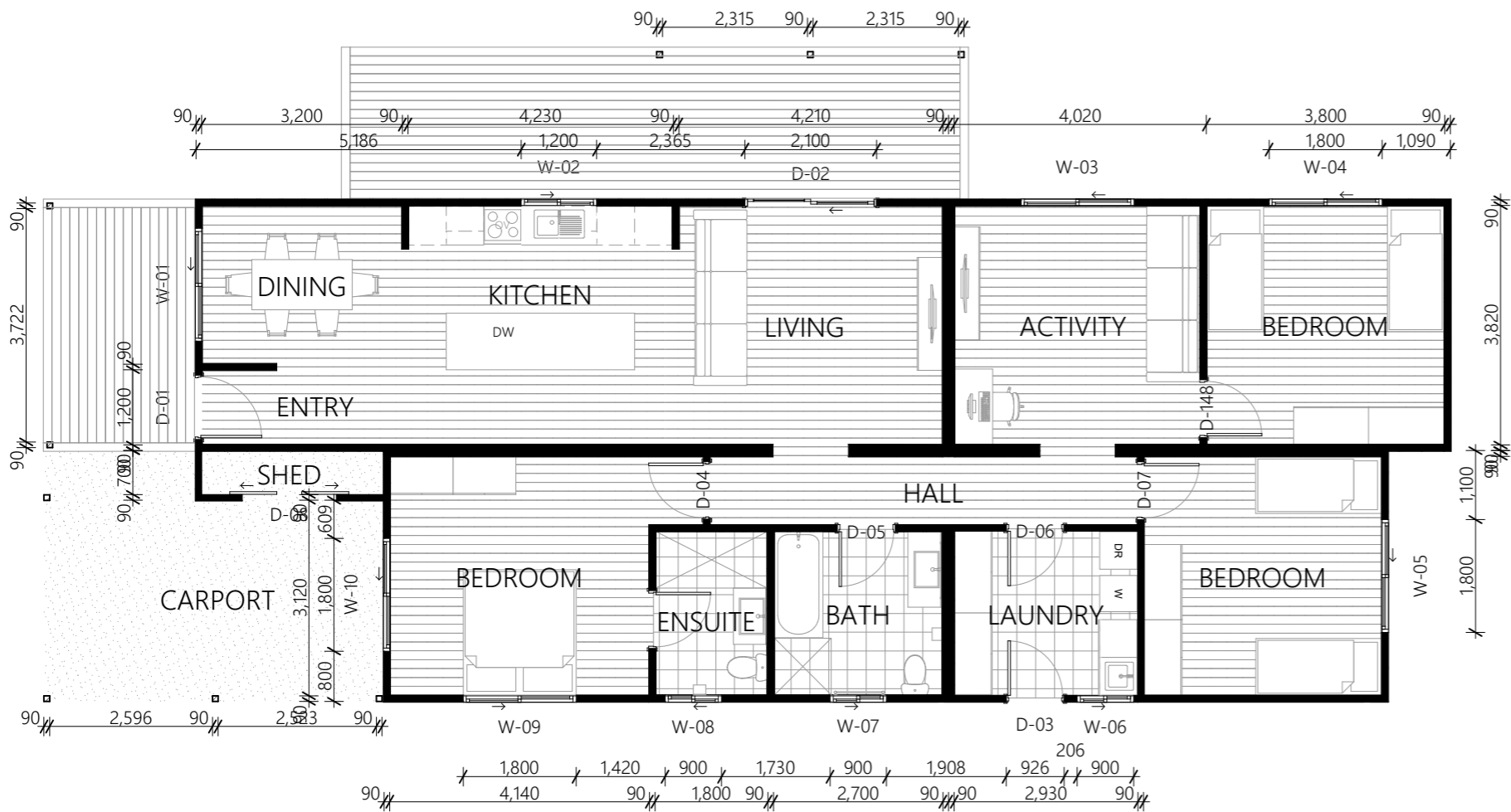
CRUSHED GRANITE



BOXWOOD
(Buxus spp)

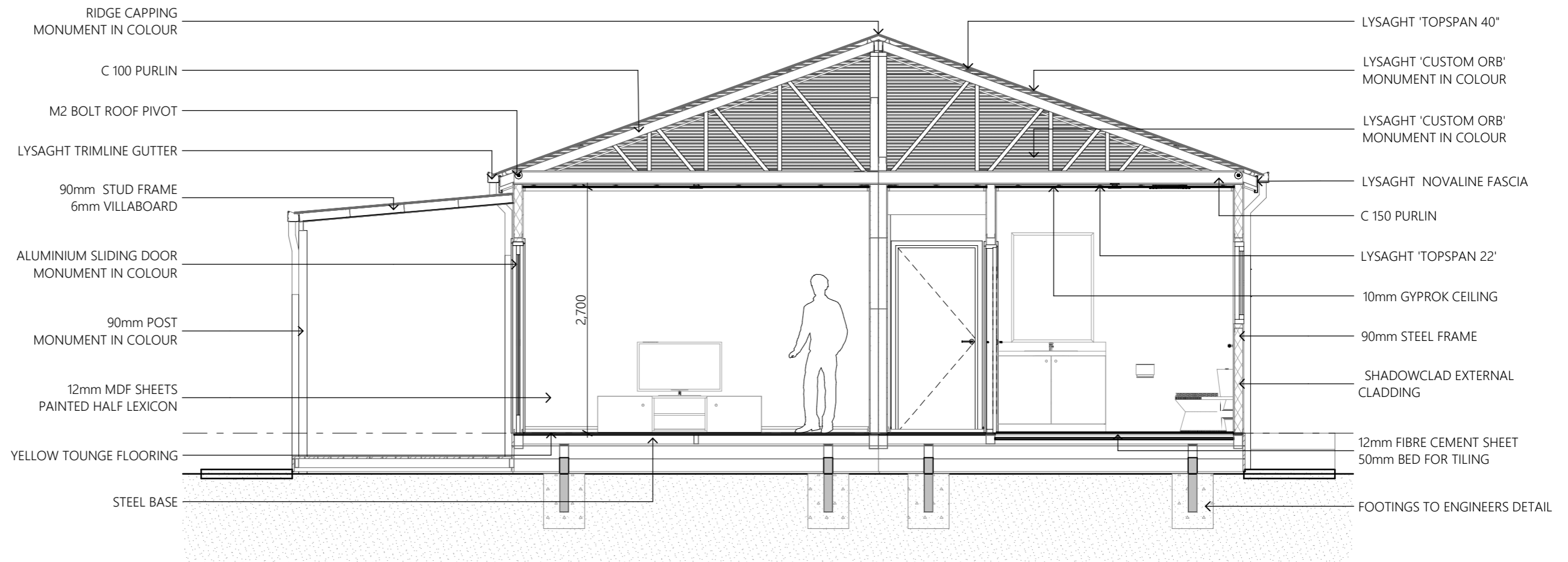


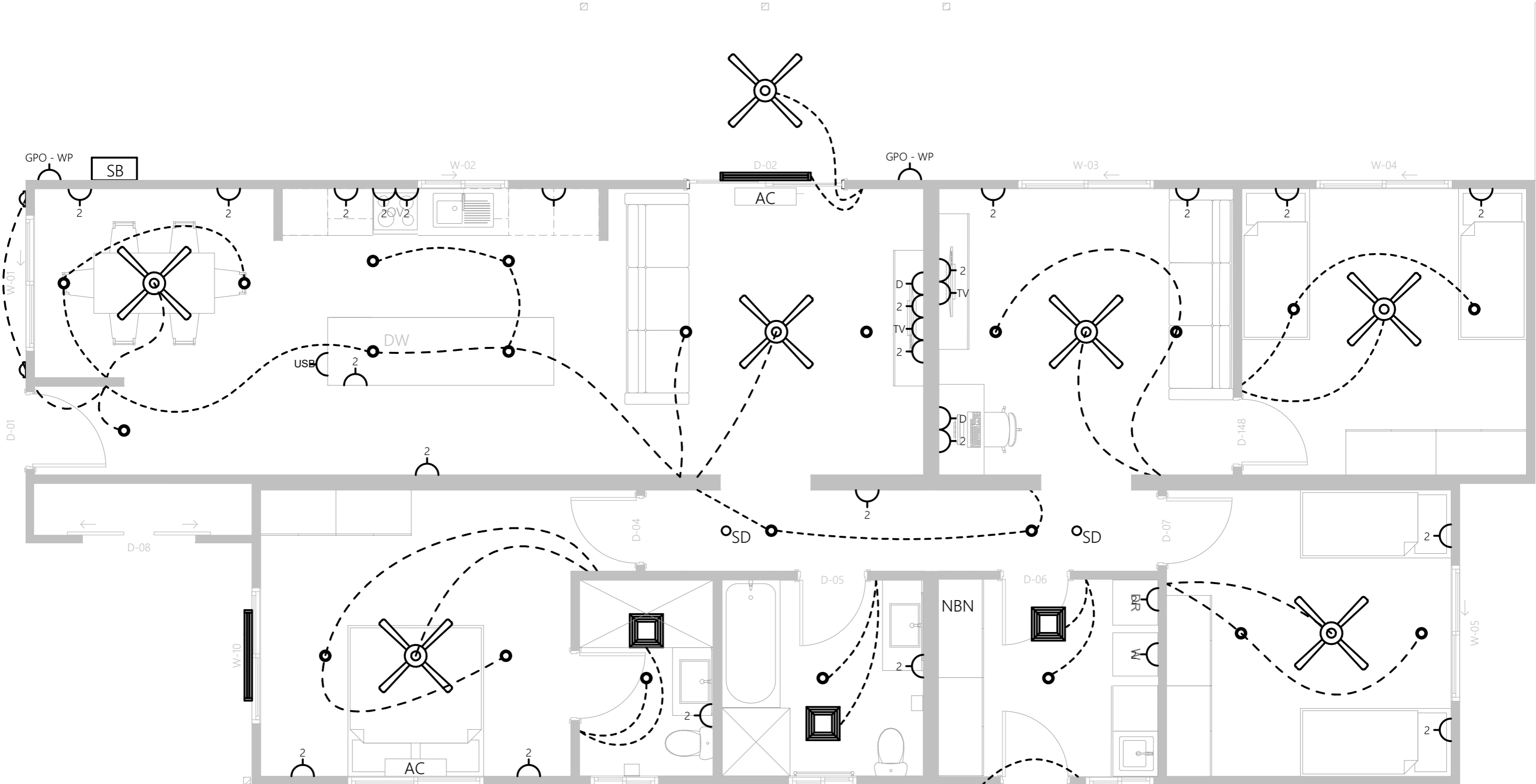
FOUNTAIN GRASS
(Pennisetum alopecuroides)



ROOF PIVOT DETAIL
1:10

FLOOR PLAN
1:100



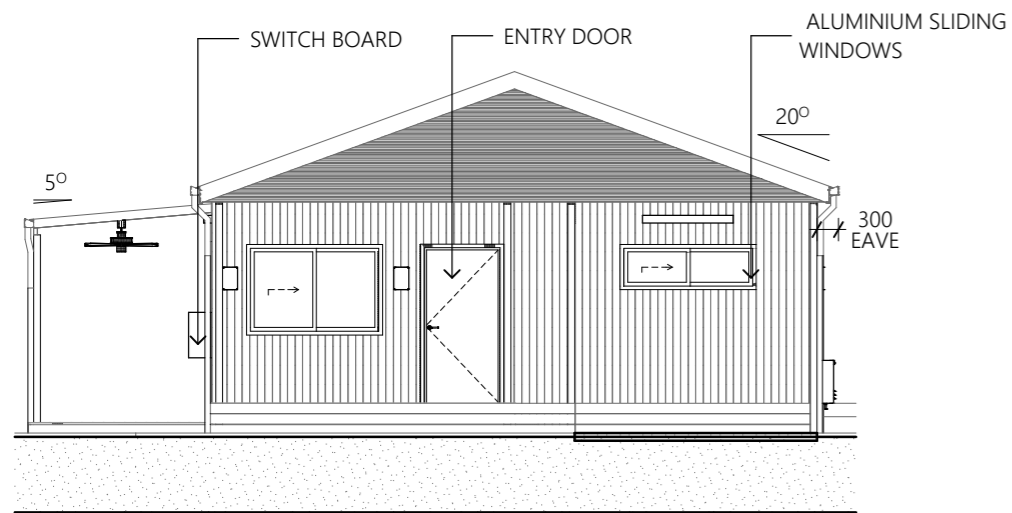


- LEGEND**
- GPO EXTERNAL DOUBLE WEATHER PROOF
 - GPO INTERNAL DOUBLE
 - GPO INTERNAL SINGLE
 - GPO INTERNAL DOUBLE WITH USB
 - TV ANTENNA POINT
 - DATA POINT
 - WALL SCONCE
 - DOWNLIGHT
 - 1200 LED BATTEN LIGHT
 - SMOKE DETECTOR
 - EXHAUST FAN VENTED OUTSIDE
 - CEILING FAN
 - NBN MODEM
 - METER BOX

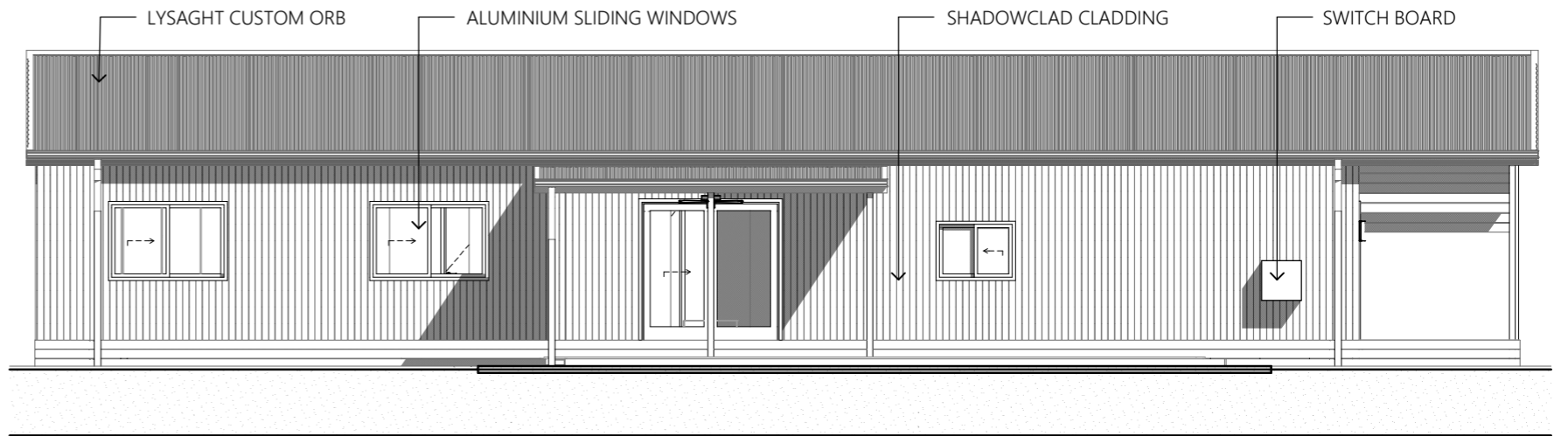
© COPYRIGHT
All drawings remain the right of
Adaptive Interiors unless given written consent by
Adaptive Interiors.
Duplicating these plans is strictly forbidden
unless given written permission by Adaptive Interiors.

| | |
|----------------|--------------------------------------|
| Project: | 3 BEDROOM DWELLING |
| Site Address: | 25 CLEATON STREET WILCANNIA NSW 2836 |
| Client: | ABORIGINAL HOUSING OFFICE |
| Drawing Title: | REFLECTED CEILING PLAN |

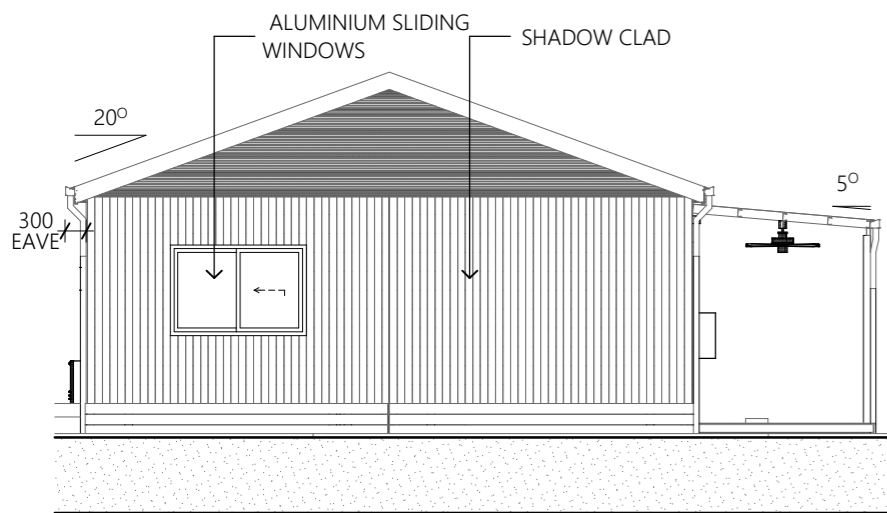
| | | |
|-------------|----------------|-----------|
| | Revision: | H |
| | Revision Date: | 6/02/2023 |
| | Drawn: | D.Argus |
| | Sheet ID | A004 |
| Project NO. | 21474 | |



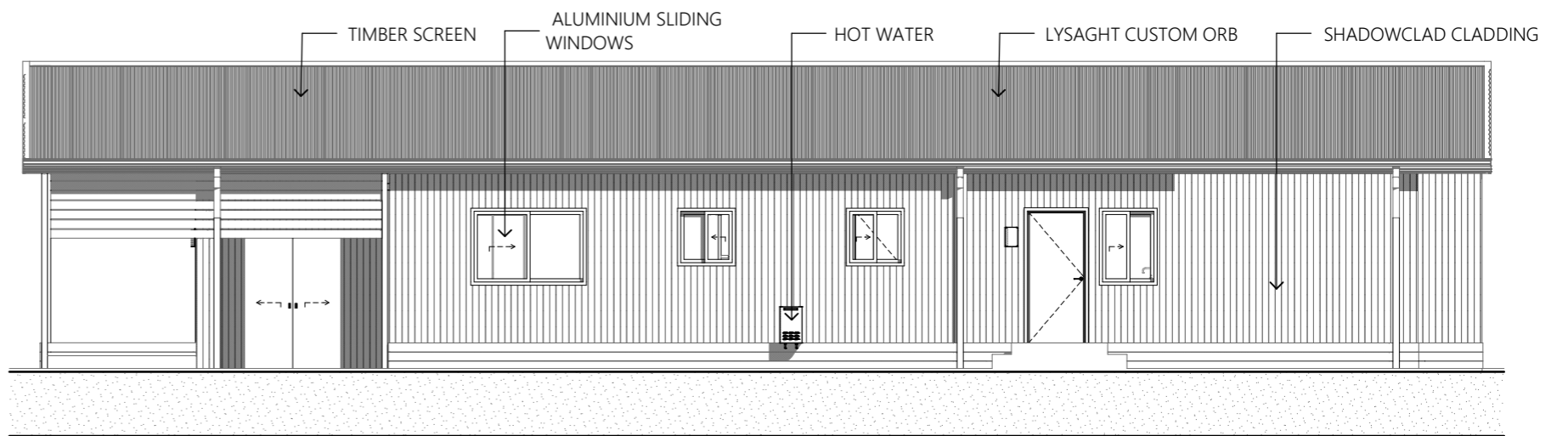
WEST ELEVATION
1:100



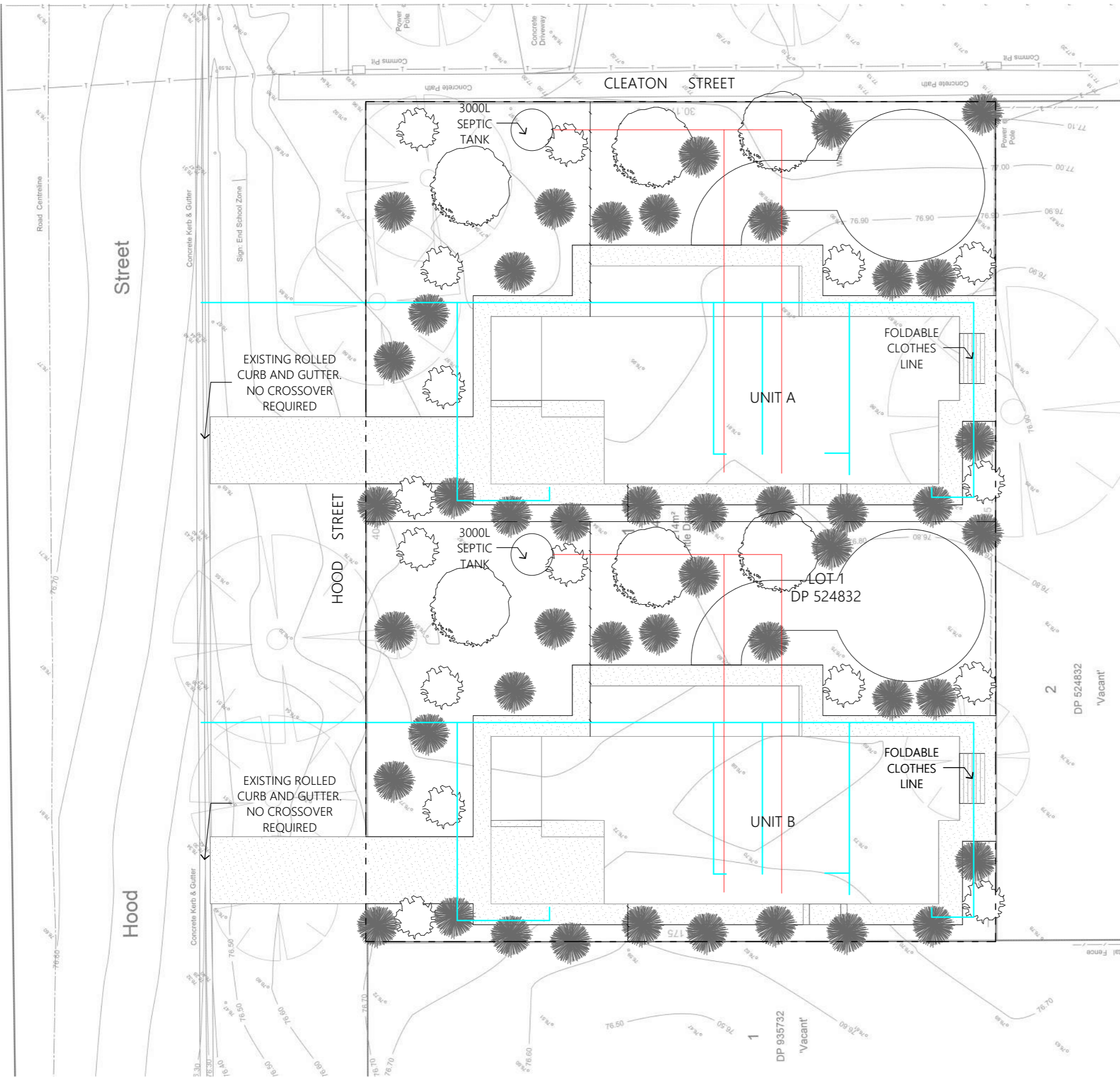
NORTH ELEVATION
1:100



EAST ELEVATION
1:100



SOUTH ELEVATION
1:100



LEGEND
 — STORMWATER
 — SEWER

STORMWATER & SEWER PLAN
 1:200



© COPYRIGHT
 All drawings remain the right of
 Adaptive Interiors unless given written consent by
 Adaptive Interiors.
 Duplicating these plans is strictly forbidden
 unless given written permission by Adaptive Interiors.

| | |
|----------------|--------------------------------------|
| Project: | 3 BEDROOM DWELLING |
| Site Address: | 25 CLEATON STREET WILCANNIA NSW 2836 |
| Client: | ABORIGINAL HOUSING OFFICE |
| Drawing Title: | STORMWATER & SEWER PLAN |

| | |
|----------------|-----------|
| Revision: | H |
| Revision Date: | 6/02/2023 |
| Drawn: | D.Argus |
| Sheet ID: | A006 |
| Project NO.: | 21474 |

| ID | W-01 | W-02 | W-03 | W-04 | W-05 | W-06 | W-07 | W-08 | W-09 | W-10 |
|--------------------|--|--|--|--|--|--|--|--|--|--|
| Width | 1,800 | 1,200 | 1,800 | 1,800 | 1,800 | 900 | 900 | 900 | 1,800 | 1,800 |
| Height | 1,200 | 900 | 1,200 | 1,200 | 1,200 | 1,200 | 900 | 900 | 1,200 | 600 |
| Sill Height | 900 | 900 | 900 | 900 | 900 | 900 | 1,200 | 1,200 | 900 | 1,500 |
| Head Height | 2,100 | 1,800 | 2,100 | 2,100 | 2,100 | 2,100 | 2,100 | 2,100 | 2,100 | 2,100 |
| Orientation | R | L | R | R | L | R | R | L | R | R |
| Qty | 1 | 1 | 1 | 1 | 1 | 1 | 1 | 1 | 1 | 1 |
| Plan Preview | | | | | | | | | | |
| External Elevation | | | | | | | | | | |
| Notes | ALUMINIUM SLIDING - POWDER COATED MONUMENT - CRIMSAFE FLY SCREEN | ALUMINIUM SLIDING - POWDER COATED MONUMENT - CRIMSAFE FLY SCREEN | ALUMINIUM SLIDING - POWDER COATED MONUMENT - CRIMSAFE FLY SCREEN | ALUMINIUM SLIDING - POWDER COATED MONUMENT - CRIMSAFE FLY SCREEN | ALUMINIUM SLIDING - POWDER COATED MONUMENT - CRIMSAFE FLY SCREEN | ALUMINIUM SLIDING - POWDER COATED MONUMENT - CRIMSAFE FLY SCREEN | ALUMINIUM SLIDING - POWDER COATED MONUMENT - CRIMSAFE FLY SCREEN | ALUMINIUM SLIDING - POWDER COATED MONUMENT - CRIMSAFE FLY SCREEN | ALUMINIUM SLIDING - POWDER COATED MONUMENT - CRIMSAFE FLY SCREEN | ALUMINIUM SLIDING - POWDER COATED MONUMENT - CRIMSAFE FLY SCREEN |

| ID | D-01 | D-02 | D-03 | D-04 | D-05 | D-06 | D-07 | D-08 |
|--------------------|--|--|---|---|--|--|--|-------------|
| Leaf Dimensions | 970x2,040 | 2,020x2,060 | 870x2,040 | 870x2,040 | 870x2,040 | 870x2,040 | 870x2,040 | 1,400x2,050 |
| Qty | 1 | 1 | 1 | 1 | 1 | 1 | 1 | 1 |
| Orientation | L | R | R | L | L | L | R | |
| Plan Preview | | | | | | | | |
| External Elevation | | | | | | | | |
| Notes | SOLID CORE EXTERNAL DOOR - STEEL DOOR JAMB - PAINTED MONUMENT EXTERNAL - HALF LEXICON INTERNAL | ALUMINIUM SLIDING DOOR - POWDERCOATED MONUMNET | SOLID CORE EXTERNAL DOOR - STEEL DOOR JAMB - PAINTED MONUMENT | SOLID CORE EXTERNAL DOOR - STEEL DOOR JAMB - PAINTED MONUMENT | SOLID CORE INTERNAL DOOR - STEEL DOOR JAMB - PAINTED HALF EXICON | SOLID CORE INTERNAL DOOR - STEEL DOOR JAMB - PAINTED HALF EXICON | SOLID CORE INTERNAL DOOR - STEEL DOOR JAMB - PAINTED HALF EXICON | <Undefined> |