

28 March 2024

This algal report is based on routine algae monitoring at sites in the Murray and Sunraysia Algae Reporting Area. Satellite imagery may be used to supplement the monitoring data.

Summary

General comments: Sampling results reveal that high algae concentrations are continuing at Menindee lakes and Lower Darling River. The Red alerts for blue-green algae are current for Tandure Lake, Lake Wetherell, Pamamaroo outlet, Lake Menindee, the Great Darling Anabranh at the Silver City Highway crossing, and the Lower Darling River from Lake Wetherell to the Darling River confluence with the Murray at Wentworth NSW. Most of these Red alerts are related to a high total BGA biovolume (not-toxic), except in Lake Wetherell Site 4 and Silver City Highway crossing, where a Red alert is related to high potential toxic BGA.

Although the satellite imagery (23/03) still shows a high risk of algae for Menindee lakes and lower Darling River, it suggests algae activity has been reduced compared to the images from March 18th.

Please note that direct comparisons with sampling results should be made with caution as the satellite data is of a later date.

Please note that there is a dual reticulated water system, where garden taps have untreated water drawn from the river, for Menindee and Lower Darling River at Pooncarie. Therefore livestock, pets and children should not be exposed to this water and that caution should be practiced if using the water for watering food crops and lawns.

Alert status:

Murray River

Manus Lake at the pontoon is currently on **Amber** alert for blue-green algae. For more information visit the Snowy valleys Council website at the following link: [Link to Snowy Valleys Council](#)

In Hume Dam, Frist Bay Creek is on **Red** alert for blue-green algae.

The Mulwala Canal offtake as well as the Murray River at Tocumwal, Picnic Point, Moama, Tooleybuc, Mount Dispersion, Buronga, Merbein, Curlwaa, Fort Courage and Lock 8 are on **Amber** alert.

Lake Benanee Rec Area as well as Lake Victoria Outlet Regulator are on **Amber** alert.

BILLBONG CREEK, EDWARD & WAKOOL RIVERS

The Gulpa Creek at Mathoura as well as the Edward River at Deniliquin are on **Amber** alert for blue-green algae.

Darling River, Menindee Lakes, and Darling Anabranh

The Menindee Lakes at Lake Menindee Site 19 is currently on **Red** alert. This alert has been applied by satellite imagery.

The Menindee Lakes at Lake Wetherell, Lake Tandure, Lake Pamamaroo Outlet, Lake Wetherell adjacent to Lake Pamamaroo Inlet, are currently on **Red** alert for blue-green algae.

The Great Darling Anabranh at the Silver City Highway crossing is on **Red** alert for blue-green algae.

the Lower Darling River from Lake Wetherell to the Darling River confluence with the Murray at Wentworth NSW is on **Red** alert for blue-green algae.

Amber alerts for blue-green algae are current for the Menindee Lakes at Copi Hollow, Lake Pamamaroo inlet, centre, Lake Pamamaroo adjacent to inlet regulator, SouthEast of Lake Pamamaroo inlet regulator, Lake Cawndilla outlet. Please refer to Table 1 on pages 2 and 3 for the combined results.

Satellite Imagery: The algae condition in the Hume Dam remains stable, with noticeable growth observed in the Murray Arm, Bowna Arm, and Mitta Mitta Arm upstream of the Narrows. The satellite imagery from 23/03/2024 indicates that high algal activity continues across the Menindee system (Figure 2). However, Due to cloudy weather, the satellite imagery could not provide high-resolution images. Furthermore, the satellite image in Figure 3 and 4 suggests medium to high phytoplankton activity in the Darling River u/s Weir 32, Lower Darling River, and low to medium activity in the Murray River. Figure 5 indicates low phytoplankton activity in the Murray River at Yarrawonga Weir, except for increased algal growth around Kyffins reservoir and the Leeward site. The most recent images are displayed on pages 5-7 of this report.

Weather Outlook (7 days): In the upper reaches of the catchment near Albury, warm air temperatures are expected during most of the days, along with a mix of mostly sunny and partly cloudy conditions, occasionally accompanied by showers. Towards the end of the week, there is a drop in temperature. Similar weather patterns are predicted for Menindee Lakes downstream in the catchment, with daily air temperatures expected to be slightly higher and more possible showers. You can find a detailed seven-day weather forecast on page 7.

Algal Outlook: The forecast predicts mostly sunny and warm weather in the upper reaches of the catchment and at Menindee next week. These weather conditions appear to promote algal growth. Currently, the algae risk is high for storages and medium to high for the rivers.

Results Table

These alert levels apply to **non-consumptive or recreational contact**. Drinking water safety thresholds are much more stringent.

Note: * indicates that sampling results show that algal numbers have reduced, however another low sampling result is required to reduce the alert status to a lower level.

 indicates that a red alert has been issued based on satellite imagery, which indicate a high risk of algae.

Table 1 Combined Murray and Sunraysia Cyanobacteria Alert Level Update 28 March 2024

Site	Description	Latest Sample Date	Cyanobacteria Total Count (cells/mL)	Cyanobacteria Biovolume (mm ³ /L)	Potentially Toxic Cyanobacteria Count (cells/mL)	Potentially Toxic Cyanobacterial Biovolume (mm ³ /L)	Current Status (based on Latest Sample)	Previous Status	Cyanobacteria dominant taxa potentially toxic	Cyanobacteria Comments
MURRAY RIVER SYSTEM										
	Corryong Supply - Raw Water Inlet to Corryong TP (NE Water)	4/03/2024	115,674	0.600	0	0.000	AMBER			
	Manus Lake (SVC) Lake pontoon	18/03/2024	0	0.000	0	0.000	AMBER	Red		
DLH003	Lake Hume, Eldon	4/03/2024	13439.000	0.002	0	0.000	No Alert	No Alert		
DLH003	Lake Hume, Heywoods Bay nr Bethanga	4/03/2024	18345.000	0.004	0	0.000	No Alert	No Alert		
DLH002	Lake Hume, Hume Dam Resort	4/03/2024	20577.000	0.005	0	0.000	No Alert	No Alert		
DLH004	Lake Hume, Dam Wall	4/03/2024	18918.000	0.004	0	0.000	No Alert	No Alert		
DLH010	Lake Hume, Bowna	4/03/2024	57903.000	0.189	204	0.005	GREEN	No Alert	<i>Microcystis</i> sp.	Potentially toxic, taste & odour
DLH011	Hume Dam at Frist Bay Creek	7/02/2024	94724.000	24.960	0	0.000	RED	GREEN		
	Tallangatta Supply - Mitta Mitta River at P/S (NE Water)	19/02/2024	2,253	0.082	235	0.016	GREEN	No Alert	<i>Aphanizomenonaceae</i> family - straight	Potentially toxic
N1000	Murray R. Union Bridge Albury	6/03/2024	6307.000	0.021	850	0.019	No Alert	No Alert	<i>Microcystis</i> sp.	Potentially toxic, taste & odour
N1001	Murray R. Corowa	6/03/2024	3471.000	0.005	0	0.000	No Alert	No Alert		
	Yarrawonga Weir (outlet) GMW	18/03/2024	20,405	0.126	62	0.017	GREEN	GREEN	<i>Dolichospermum</i> - coiled (26µm)	Potentially toxic
N1008	Mulwala Canal Offtake	6/03/2024	38609.000	1.736	0	0.000	AMBER	AMBER		
N1007	Murray R. @ below Yarrawonga	6/03/2024	16596.000	0.065	374	0.046	GREEN	AMBER	<i>Dolichospermum</i> circinale	Potentially toxic, taste & odour
N1051	Murray R. Cobram (Barooga)	6/03/2024	19784.000	0.049	0	0.000	GREEN	AMBER		
	Cobram WTP, raw water (GVW)	12/03/2024	20,696	0.177	638	0.043	GREEN	AMBER	<i>Aphanizomenonaceae</i> family - straight	Potentially toxic
N1013	Murray R. Tocumwal	6/03/2024	54418.000	2.155	306	0.009	AMBER	AMBER	<i>Radocystis</i> sp.	Potentially toxic
N1052	Murray R. Picnic Point	4/03/2024	61879.000	0.728	1,770	0.062	AMBER	AMBER	<i>Raphidiopsis</i> raciborskii	Potentially toxic, taste & odour
	Barmah WTP raw water (GVW)	12/03/2024	37,025	0.495	580	0.049	AMBER	AMBER	<i>Oscillatoriales</i> (auxv 1-100)	Potentially toxic
N1050	Murray R. Moama (Echuca)	4/03/2024	52119.000	1.223	68	0.001	AMBER	AMBER	<i>Microcystis</i> sp.	Potentially toxic, taste & odour
	Torrumbarry Weir GMW	4/03/2024	22,348	0.169	169,000	0.011	GREEN	GREEN	<i>Aphanizomenonaceae</i> family - straight	Potentially toxic
N1003	Murray R. Barham (Koordrook)	5/03/2024	51654.000	0.085	408	0.012	GREEN	GREEN	<i>Radocystis</i> sp.	Potentially toxic
N1054	Murray R. Murray Downs (Swan Hill)	5/03/2024	34882.000	0.083	0	0.000	GREEN	AMBER		
	Murray River U/S Woorinen pumps GMW	4/03/2024	4,150	0.030	0	0.000	GREEN	AMBER	<i>Dolichospermum</i> - Straight (Small)	
N1055	Murray R. Tooleybuc (Piangli)	5/03/2024	177781.000	0.798	544	0.016	AMBER	GREEN	<i>Radocystis</i> sp.	Potentially toxic
N1064	Lake Benanee Rec Area	6/03/2024	20414.000	2.119	0	0.000	AMBER	No Alert		
N1028	Murray R. Euston (Robinvale)	6/03/2024	88543.000	0.379	1,566	0.185	GREEN	GREEN	<i>Dolichospermum</i> sp.	Potentially toxic, taste & odour
N1065	Murray R. Mount Dispersion	6/03/2024	118629.000	0.997	612	0.089	AMBER	AMBER	<i>Anabaenopsis</i> sp.	Potentially toxic
N1062	Murray R. Buronga	5/03/2024	197485.000	1.547	6,289	0.712	AMBER	GREEN	<i>Dolichospermum</i> sp.	Potentially toxic, taste & odour
	Merbein (LMW)	24/04/2023	0	0.397	0	0.013	GREEN	AMBER	<i>Microcystis</i> sp.	Potentially toxic
N1027	414206 - Murray River at Merbein	5/03/2024	240202.000	2.473	10,438	0.401	AMBER	GREEN	<i>Raphidiopsis</i> raciborskii	Potentially toxic, taste & odour
N1063	Murray R. Curhwa	5/03/2024	481213.000	4.796	9,098	0.455	AMBER	GREEN	<i>Raphidiopsis</i> raciborskii	Potentially toxic, taste & odour
N1066	Murray R. Fort Courage	3/03/2024	314219.000	1.826	4,730	0.168	AMBER	GREEN	<i>Raphidiopsis</i> raciborskii	Potentially toxic, taste & odour
	Lock 9 (LMW)	15/05/2023	60,991	1.789	6115	0.416	AMBER	AMBER	<i>Microcystis</i> sp.	Potentially toxic
N1077	Murray R. Lock 8	4/03/2024	144200.000	1.254	3,817	0.063	AMBER	AMBER	<i>Gelidium</i> sp.	Potentially toxic
N1078	Lake Victoria Outlet Regulator	4/03/2024	269017.000	0.475	435	0.054	AMBER	GREEN	<i>Dolichospermum</i> sp.	Potentially toxic, taste & odour

Site ID	Location	Date	Chlorophyll a (µg/L)	Chlorophyll b (µg/L)	Chlorophyll c (µg/L)	Chlorophyll total (µg/L)	Alert Level	Other	Species	Notes
BILLBONG CREEK, EDWARD & WAKOOL RIVERS										
N1020	Billabong Ck. Walbundrie	6/03/2024	73382.000	0.101	0	0.000	GREEN	AMBER		
N1015	Billabong Ck. Jerilderie	4/03/2024	33397.000	0.277	0	0.000	GREEN	GREEN		
N1006	Gulpa Ck. Mathoura	4/03/2024	70082.000	1.040	340	0.007	AMBER	AMBER	<i>Microcystis</i> sp.	Potentially toxic, taste & odour
N1002	Edward R Deniliquin	4/03/2024	100449.000	0.567	0	0.000	AMBER	AMBER		
N1053	Edward R. Old Morago	5/03/2024	99374.000	0.266	2,177	0.070	GREEN	AMBER	<i>Microcystis</i> sp.	Potentially toxic, taste & odour
N1005	Edward R. Moulamein	5/03/2024	84738.000	0.123	0	0.000	GREEN	GREEN		
N1010	Wakool R. Wakool-Barham Road	5/03/2024	161134.000	0.271	0	0.000	GREEN	AMBER		
N1004	Wakool R. @ Stoney Crossing	5/03/2024	80695.000	0.100	0	0.000	GREEN	GREEN		
N1009	Wakool R. Kyalite	5/03/2024	107894.000	0.180	0	0.000	GREEN	GREEN		
MENINDEE LAKE SYSTEM & LOWER DARLING RIVER										
N1042	Darling River at Wilcannia	6/03/2024	57033.000	0.062	527	0.012	GREEN	AMBER	<i>Phormidium</i> sp.	Potentially toxic, taste & odour
N1087	Lake Wetherell Site 1	11/03/2024	2246.000	0.001	0	0.000	No Alert	AMBER		
N1088	Lake Wetherell Site 2	11/03/2024	30240.000	0.046	0	0.000	RED	AMBER		
N1089	Lake Wetherell Site 3	11/03/2024	296519.000	0.457	1,395	0.080	RED	AMBER	<i>Microcystis</i> sp.	Potentially toxic, taste & odour
N1090	Lake Wetherell Site 4	11/03/2024	1349263.000	14.408	52,260	5.628	RED	RED	<i>Anabaenopsis</i> sp.	Potentially toxic
N1369	Lake Wetherell adjacent to Lake Pamamaroo Inlet	29/02/2024	3566825.000	17.311	39,897	2.430	RED	RED	<i>Raphidiopsis raciborskii</i>	Potentially toxic, taste & odour
N1091	Lake Tandure Site 8	12/03/2024	1136440.000	11.130	56,113	2.905	RED	RED	<i>Raphidiopsis raciborskii</i>	Potentially toxic, taste & odour
N1370	Lake Pamamaroo adjacent to inlet regulator	29/02/2024	980914.000	8.392	14,052	0.986	AMBER	AMBER	<i>Anabaenopsis</i> sp.	Potentially toxic
N1371	600m SouthEast of Lake Pamamaroo inlet regulator	29/02/2024	631720.000	8.089	12,188	0.869	AMBER	RED	<i>Raphidiopsis raciborskii</i>	Potentially toxic, taste & odour
N1092	Lake Pamamaroo Inlet (Site 9)	11/03/2024	759741.000	7.468	29,151	2.377	AMBER	AMBER	<i>Anabaenopsis</i> sp.	Potentially toxic
N1129	42510013 Centre Pamamaroo (Site 13)	12/03/2024	707359.000	2.652	1,635	0.081	AMBER	AMBER	<i>Raphidiopsis raciborskii</i>	Potentially toxic, taste & odour
N1093	Lake Pamamaroo Outlet (Site 10)	11/03/2024	1319482.000	11.815	45,655	3.025	RED	AMBER	<i>Raphidiopsis raciborskii</i>	Potentially toxic, taste & odour
N1094	Menindee Lakes, Copi Hollow	12/03/2024	888724.000	5.671	11,922	1.141	AMBER	RED	<i>Anabaenopsis</i> sp.	Potentially toxic
N1330	Lake Menindee Site 19	11/03/2024	1071103.000	4.616	0	0.000	RED	AMBER		
N1128	Lake Cawndilla Site 34 Outlet	11/03/2024	452409.000	0.740	0	0.000	AMBER	AMBER		
N1372	Darling River adjacent Burke & Wills Campsite	29/02/2024	553313.000	14.500	8,827	0.830	RED	RED	<i>Dolichospermum circinale</i>	Potentially toxic, taste & odour
N1373	Darling River DS of Menindee main weir	29/02/2024	1897813.000	26.371	18,739	1.022	RED	RED	<i>Raphidiopsis raciborskii</i>	Potentially toxic, taste & odour
N1374	Darling River downstream of train bridge	15/03/2024	1051198.000	42.766	16,241	2.157	RED	GREEN	<i>Anabaenopsis</i> sp.	Potentially toxic
N1095	Darling R. Menindee bhwb pump	11/03/2024	710355.000	25.173	5,171	0.486	RED	AMBER	<i>Anabaenopsis</i> sp.	Potentially toxic
N1086	Darling R u/s Weir 32	11/03/2024	688805.000	22.188	6,785	0.494	RED	AMBER	<i>Microcystis</i> sp.	Potentially toxic, taste & odour
N1043	Darling R. Tolarno	18/03/2024	957939.000	34.627	13,037	1.670	RED	AMBER	<i>Anabaenopsis</i> sp.	Potentially toxic
N1040	Darling R. Pooncarie	18/03/2024	1309477.000	7.830	16,331	2.385	RED	RED	<i>Anabaenopsis</i> sp.	Potentially toxic
N1041	Darling R. Burtundy	19/03/2024	1040372.000	6.646	14,694	2.810	RED	AMBER	<i>Anabaenopsis</i> sp.	Potentially toxic
N1074	Darling R. Ellerslie	19/03/2024	1218281.000	6.530	12,117	0.991	RED	RED	<i>Aphanizomenonaceae</i> sp.	Potentially toxic, taste & odour
N1075	Darling R. Tapio	19/03/2024	959494.000	11.474	16,059	2.312	RED	AMBER	<i>Anabaenopsis</i> sp.	Potentially toxic
Non routine monitoring Wentworth Weir Pool										
N1365	US Pomona (13KM)	18/03/2024	407041.000	6.297	5,358	0.445	RED	AMBER	<i>Aphanizomenonaceae</i> sp.	Potentially toxic, taste & odour
N1366	Pomona 1 (@ Boat Ramp)	18/03/2024	730581.000	7.559	1,224	0.157	RED	RED	<i>Anabaenopsis</i> sp.	Potentially toxic
GREAT DARLING ANABRANCH										
N1350	Silver City Hwy	18/03/2024	3257355.000	40.947	486,149	15.420	RED	RED	<i>Microcystis</i> sp.	Potentially toxic, taste & odour

Alert Definitions for Recreational Waters

Alert Definitions as specified in The National Health and Medical Research Council (NHMRC) *Guidelines for Managing Risks in Recreational Water* 2008. The use of these guidelines is endorsed by the Scientific Subcommittee of the NSW Algal Advisory Group.

RED ALERT

These alert levels represent 'bloom' conditions. Water will appear green or discoloured and clumps or scums could be visible. It can also give off a strong musty or organic odour. Algae may be toxic to humans and animals. Contact with or use of water from red alert areas should be avoided due to the risk of eye and skin irritation. Drinking untreated or boiled water from these supplies can cause stomach upsets. Alternative water supplies should be sought or activated carbon treatment employed to remove toxins. People should not fish when an algal scum is present. Owners should keep dogs away from high alert areas and provide alternative watering points for stock.

AMBER ALERT

Blue-green algae may be multiplying, and the water may have a green tinge and musty or organic taste and odour. The water should be considered as unsuitable for potable use and alternative supplies or prior treatment of raw water for domestic purposes should be considered. The water may also be unsuitable for stock watering. Generally suitable for water sports, however people are advised to exercise caution in these areas, as blue-green algal concentrations can rise to red alert levels quickly under warm, calm weather conditions.

GREEN ALERT

Blue-green algae occur naturally at low numbers. At these concentrations, algae would not normally be visible, however some species may affect taste and odour of water even at low numbers and does not pose any problems for recreational, stock or household use.

Key to Alerts for Recreational Waters

<p>RED Alert $\geq 50\,000$ cells/mL toxic <i>M. aeruginosa</i> OR biovolume equivalent of ≥ 4 mm³/L for the combined total of all cyanobacteria where a known toxin producer is dominant OR The total biovolume of all cyanobacteria exceeds 10 mm³/L OR Cyanobacterial blooms are consistently present</p>	<ul style="list-style-type: none"> • High levels of Blue Green Algae detected • Indicates “bloom” conditions • Toxicity should be presumed • Water will appear green or brownish and may have a strong musty taste and odour • Surface scums could occur • Extreme care should be exercised, and contact with the water should be avoided <p>Action</p> <ul style="list-style-type: none"> • Issue Media Release • Water supply authorities to increase filtering with activated carbon as appropriate • Local authority and health authorities to warn the public that the water body is unsuitable for primary contact recreation
<p>AMBER Alert ≥ 5000 to $< 50\,000$ cells/mL <i>M. aeruginosa</i> OR biovolume equivalent of ≥ 0.4 to < 4 mm³/L for the combined total of all cyanobacteria OR ≥ 0.4 to < 10mm³/L combined total for all blue-green algae where known toxin producers are not dominant</p>	<ul style="list-style-type: none"> • Indicates blue-green algae are multiplying • Water may have a green tinge and musty taste and odour <p>Action</p> <ul style="list-style-type: none"> • Water supply authorities to consider filtering with activated carbon • Investigations into the causes of the elevated levels and increased sampling to enable the risks to recreational users to be more accurately assessed.
<p>GREEN Alert > 500 to < 5000 cells/mL <i>M. aeruginosa</i> OR biovolume equivalent of > 0.04 to < 0.4 mm³/L for the combined total of all cyanobacteria</p>	<ul style="list-style-type: none"> • Low levels of potentially toxic species detected – suggesting base crop of blue green algae may be on the increase <p>Action</p> <ul style="list-style-type: none"> • Continue/increase routine sampling to measure cyanobacterial levels

Livestock Drinking Water Guidelines Based on ARMCANZ (2000), Orr and Schneider (2006) and WQRA (2010)

This guideline should be used when water is used for livestock drinking water purposes.

- If visual scums are present, then a High alert should be declared. This would be applicable for both farm dams and publicly managed water bodies (streams, rivers, etc). Such advice should also be given to farmers who phone the department seeking information on managing blooms in their dams.
- Where blooms dominated by *Microcystis aeruginosa* are present, then the ANZECC/ARMCANZ (2000) guideline of 11,500 cells/mL should be used. Excess of this cell count will constitute a **High alert**.
- Where blooms dominated by *Dolichospermum circinale* are present, then the Orr and Schneider (2006) guideline of 25,000 cells/mL should be used. Excess of this cell count will constitute a **High alert**.
- **Blooms of blue-green algae other than *M. aeruginosa* and *D. circinale*** are also common in NSW. These can be of either known potentially toxic species, or of species not considered to be toxin producers. When these blooms are present, a total blue-green algal biovolume in excess of 6 mm³/L will constitute a **High alert**. (These are based on Very High alert recommendations for raw water sourced for potable human supply published by WQRA (2010), in lieu of there being nothing else available).

Satellite imagery

The key to the approximate total algae (blue green and non-blue green) concentrations using the Custom Algae Script can be found Table 1. The actual values can potentially vary by a significant margin due to the geology of the waterbody, species of algae, turbidity, aquatic plants, time of day of the image capture, aerosols in the atmosphere, etc. This variability is a result of the nature of satellite imagery being a large-scale remote sensing format and is not function of the technology or the script itself. For this reason, these colours and descriptors are not the official “**Algae Alert Level**” but rather provides information on the **potential risk on algae formation**.

Table 1: Observed risk levels based on the estimated photosynthetic activity for Custom Algae Script

Map Colour	Risk Level	Starting concentration guide range	RACC recreational alert values approx. equivalence
Blue	Very low	<0.05 mm ³ /L	No Alert
Green	Low	0.05 to 0.5 mm ³ /L	Green
Yellow	Medium	0.5 to 5.0 mm ³ /L	Amber
Red	High	5.0 to 20.0 mm ³ /L	Red
Dark red	Extreme	> 20 mm ³ /L	Red

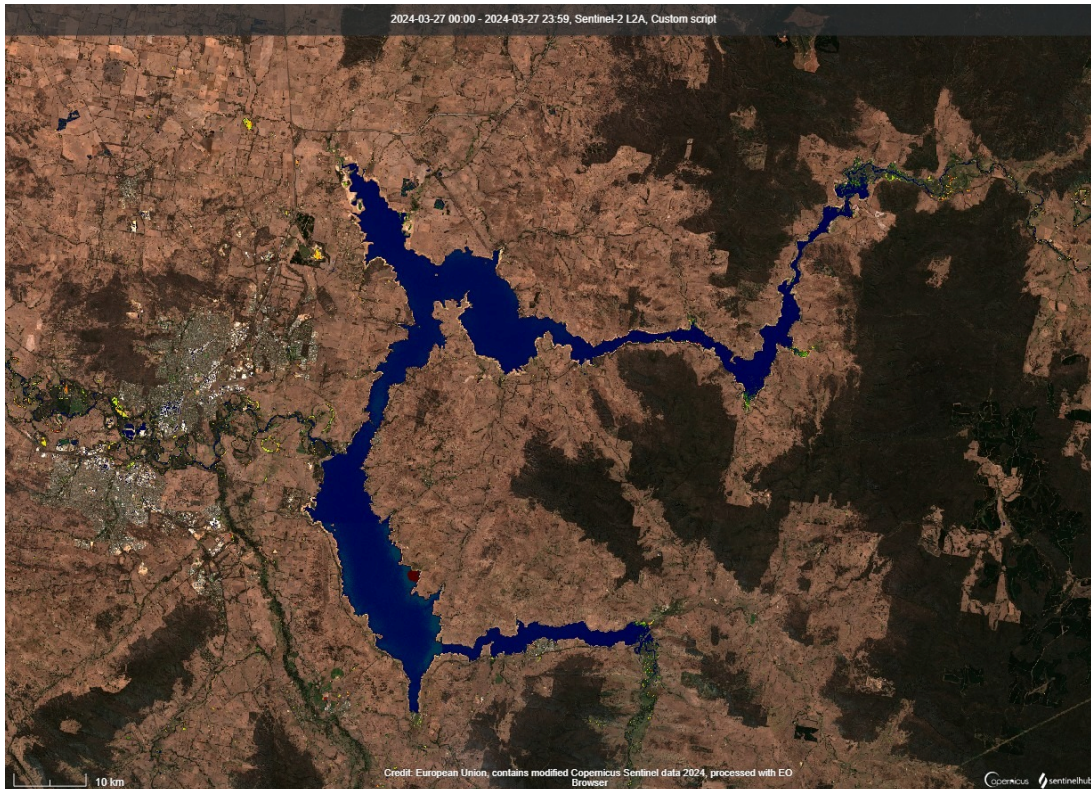
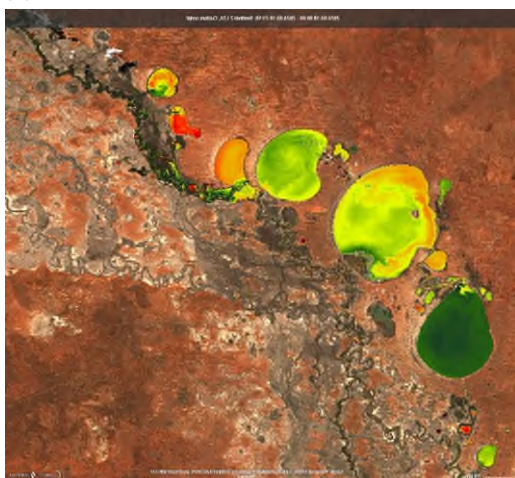


Figure 1: Hume Dam **27/03/2024** SentinelHub [CC BY-NC 4.0] NSW-Custom Algae Script - TF, WaterNSW

(a)



(b)



Figure 2: Menindee Lakes (a) **18/03/2024** (b) **23/03/2024**. SentinelHub [CC BY-NC 4.0] NSW-Custom Algae Script - TF, WaterNSW

(a)



(b)

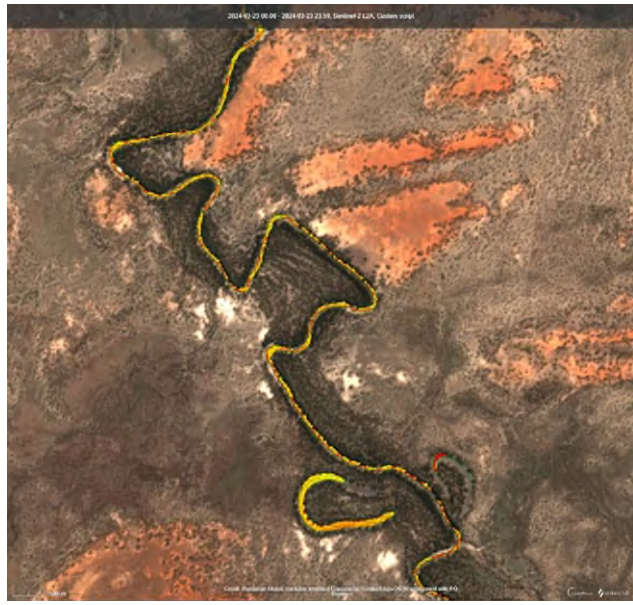


Figure 3: (a) Darling River up stream Weir 32. (b) Darling River at Tolarno **23/03/2024**. SentinelHub [CC BY-NC 4.0] NSW-Custom Algae Script - TF, WaterNSW










Figure 4: Murray and Darling Rivers as well as the great Darling anabranch near Wentworth **23/03/2024** SentinelHub [CC BY-NC 4.0] NSW-Custom Algae Script - TF, WaterNSW










Figure 5: Murray River at Yarrowonga Weir 27/03/2024 SentinelHub [CC BY-NC 4.0] NSW-Custom Algae Script - TF, WaterNSW

Weather forecast

Albury and Menindee lake, [BOM 7-day weather forecast](#)

Albury							
Forecast updated at 9:45 am EDT on Thursday 28 March 2024.							
	Thu. 28 Mar	Fri. 29 Mar	Sat. 30 Mar	Sun. 31 Mar	Mon. 1 Apr	Tue. 2 Apr	Wed. 3 Apr
							
	Sunny.	Sunny.	Mostly sunny.	Sunny.	Partly cloudy.	Shower or two.	Partly cloudy.
Max. Temperature	29 °C	31 °C	32 °C	32 °C	30 °C	25 °C	24 °C
Min. Temperature		10 °C	12 °C	14 °C	13 °C	14 °C	11 °C

Menindee							
Forecast updated at 9:45 am EDT on Thursday 28 March 2024.							
	Thu. 28 Mar	Fri. 29 Mar	Sat. 30 Mar	Sun. 31 Mar	Mon. 1 Apr	Tue. 2 Apr	Wed. 3 Apr
							
	Sunny.	Sunny.	Possible shower.	Shower or two.	Possible shower.	Possible shower.	Partly cloudy.
Max. Temperature	30 °C	33 °C	32 °C	30 °C	32 °C	26 °C	24 °C
Min. Temperature		12 °C	18 °C	19 °C	17 °C	14 °C	9 °C

Further Information and Contacts

Links to websites of VIC and other agencies

[Link to Snowy Valleys Council](#)

[Link to North East Water](#)

[Link to Goulburn-Murray Water blue-green algal alerts](#)

[Link to Goulburn Valley Water blue-green algal information](#)

[Link to Lower Murray Water blue-green algal alerts](#)

Go to the Water NSW Algal Website

www.waternsw.com.au/algae or at WaterInsights:

Murray regulated river - <https://waterinsights.waternsw.com.au/11904-new-south-wales-murray-regulated-river/updates>

Lower-Darling regulated river - <https://waterinsights.waternsw.com.au/12104-lower-darling-regulated-river/updates>

Contacts

Azadeh Golshan (A/Coordinator)

Azadeh.Golshan@waternsw.com.au

M: 0434193977