

# Daily Darling River Summary

Issue 5, Monday 14 April 2025

## KEY POINTS

- \* Paroo River at Wanaaring has peaked (08/04/2025) and continues to fall slowly.
- \* Warrego River at Barringun has peaked (11/04/2025) and is falling. Further rises are possible with more upstream flows.
- \* Barwon River at Walgett is currently 11.67m and has peaked below the 12.00m predicted. BOM warning has been updated, next update is scheduled for Monday 14/04/25 16:00.
- \* Headwaters of the Paroo have reached approximately **144.04529° E, -30.24498 S** as at 13/04/2025.

<b>KEY</b>	Rising ↑
	Steady →
	Falling ↓

As at 6am

River	Location	Type	Height (m)		Rise (cm)	Vol (ML/d)	Flood of Record	Predicted Height & Date	
Barwon	Collarenebri	Auto	5.25	↓	-	19927	<b>8.89m</b> <b>1976</b>	<b>5.21</b> Below Minor	14/04/2025
	Walgett	Auto	11.67	↑	-	61259	<b>13.84m</b> <b>1893</b>	<b>11.66</b> Min	14/04/2025
	Brewarrina	Auto	4.64	↑	-	19032	<b>12.14m</b> <b>1893</b>	<b>4.67</b> Below Minor	14/04/2025
Culgoa	Brenda	Auto	3.94	↑	-	3423	<b>6.30m</b> <b>1890</b>	<b>3.94</b> Below Minor	14/04/2025
	Weilmoringle	Auto	5.25	→	-	5952	<b>6.10m</b> <b>2011</b>	<b>5.25</b> Min	14/04/2025
	Kenebree	Auto	5.81	→	-	12820	<b>7.5m</b> <b>1893</b>	<b>5.82</b> Mod	14/04/2025
Warrego	Barringun	Auto	4.6	↑	-	19202	<b>5.63m</b> <b>1956</b>	<b>4.61</b> Mod	14/04/2025
	Enngonia	Auto	2.55	↓	-	-	<b>3.05m</b> <b>1956</b>	<b>2.55</b> Mod	13/04/2025
	Fords Bridge Bywash	Auto	2.46	↑	-	945	<b>3.21m</b> <b>1990</b>	<b>2.47</b> Mod	14/04/2025
Cuttaburra	Cuttaburra Channel at Turra	Auto	4.63	→	-	46440	- -	4.62 -	4/14/2025
Paroo	Willara Crossing	Auto	2.89	↓	-17	22789	- <b>2010</b>	<b>2.88</b> Min	4/14/2025
	Wanaaring	Auto	4.17	↓	-	-	- <b>1990</b>	<b>4.34</b> Maj	14/04/2025
	Porters Crossing - REACTIVATING	Auto	-	→	-	-	- -	- -	-

# Daily Darling River Summary

Issue 5, Monday 14 April 2025

River	Location	Type	Height (m)		Rise (cm)	Vol (ML/d)	Flood of Record	Predicted Height & Date	
Darling	Bourke	Auto	7.69	↑	32	22026	14.18m 1976	7.73 Below Minor	14/04/2025
	Louth	Auto	6.13	↑	38	15170	13.94m 1890	6.17 Below Minor	14/04/2025
	Tilpa	Auto	5.07	↑	46	9978	13.35m 1976	5.11 Below Minor	14/04/2025
	Wilcannia	Auto	2	↑	57	2561	11.59m 1976	2.09 Below Minor	4/14/2025
	Nelia Gaari	Auto	-	➔	-	-	- -	59.97 -	4/14/2025
Talyawalka	Trevallyn	Auto	-	➔	-	-	- -	- -	-
	Wilga (NPWS)	Property	-	➔	-	-	- -	- -	-

■ Data Sources

- 1. WaterNSW
- 2. Bureau of Meteorology

■ Requests for Assistance

NSW SES  
132 500

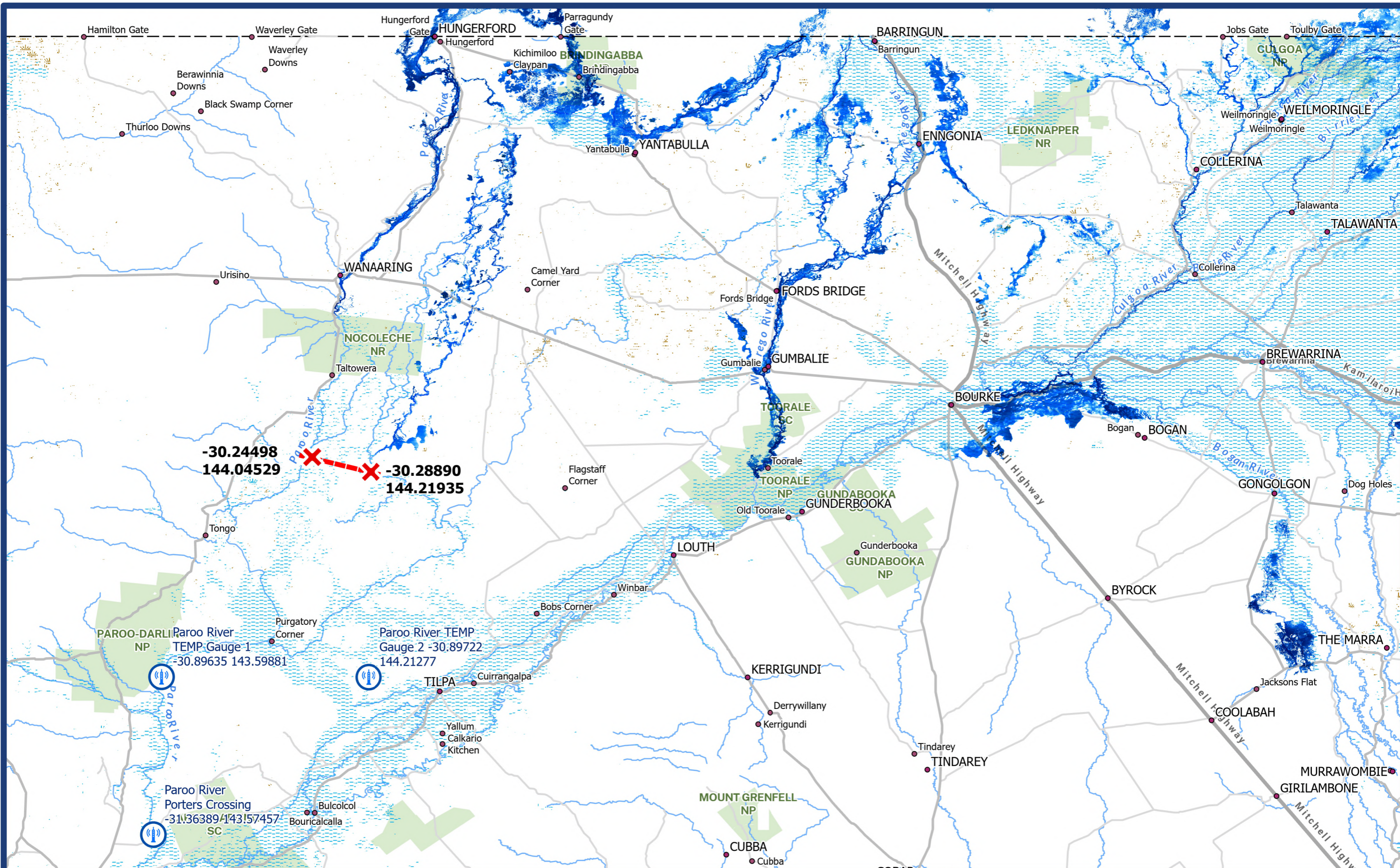
Agriculture & Animal Services Function Area (AASFA)  
1800 814 647

Access the latest warnings and information via [www.hazardwatch.gov.au](http://www.hazardwatch.gov.au)



Contact us

For more information, please contact Western Zone via:  
E: [wtz.ops@ses.nsw.gov.au](mailto:wtz.ops@ses.nsw.gov.au)  
W: [www.ses.nsw.gov.au](http://www.ses.nsw.gov.au)



-30.24498  
144.04529

-30.28890  
144.21935

Paroo River TEMP Gauge 1  
-30.89635 143.59881

Paroo River TEMP Gauge 2  
-30.89722 144.21277

Paroo River Porters Crossing  
-31.36389 143.57457



NSW ICEYE - Release 12 (R13 still upcoming)  
Map 14 APRIL 2025 09:00am

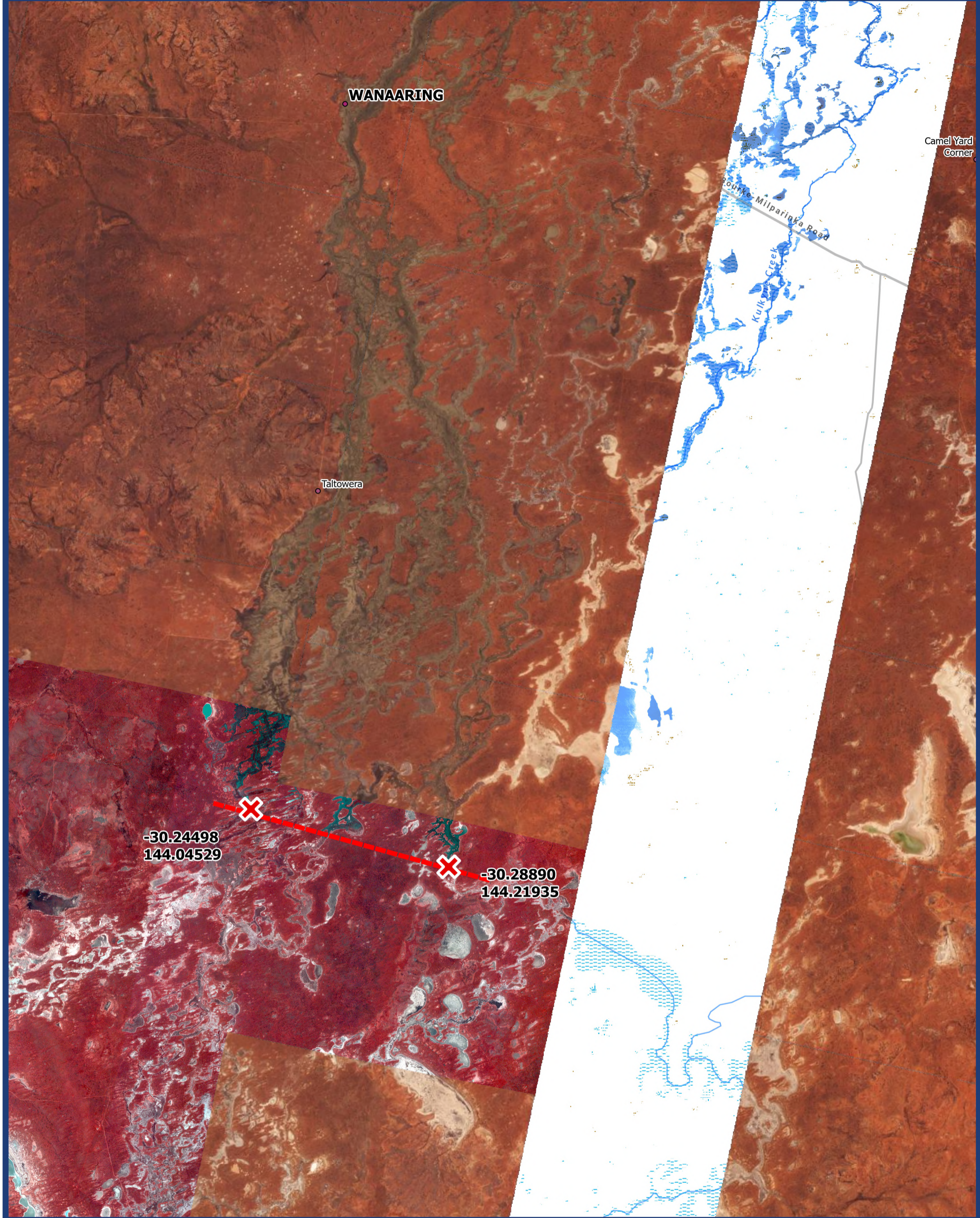
**Legend**

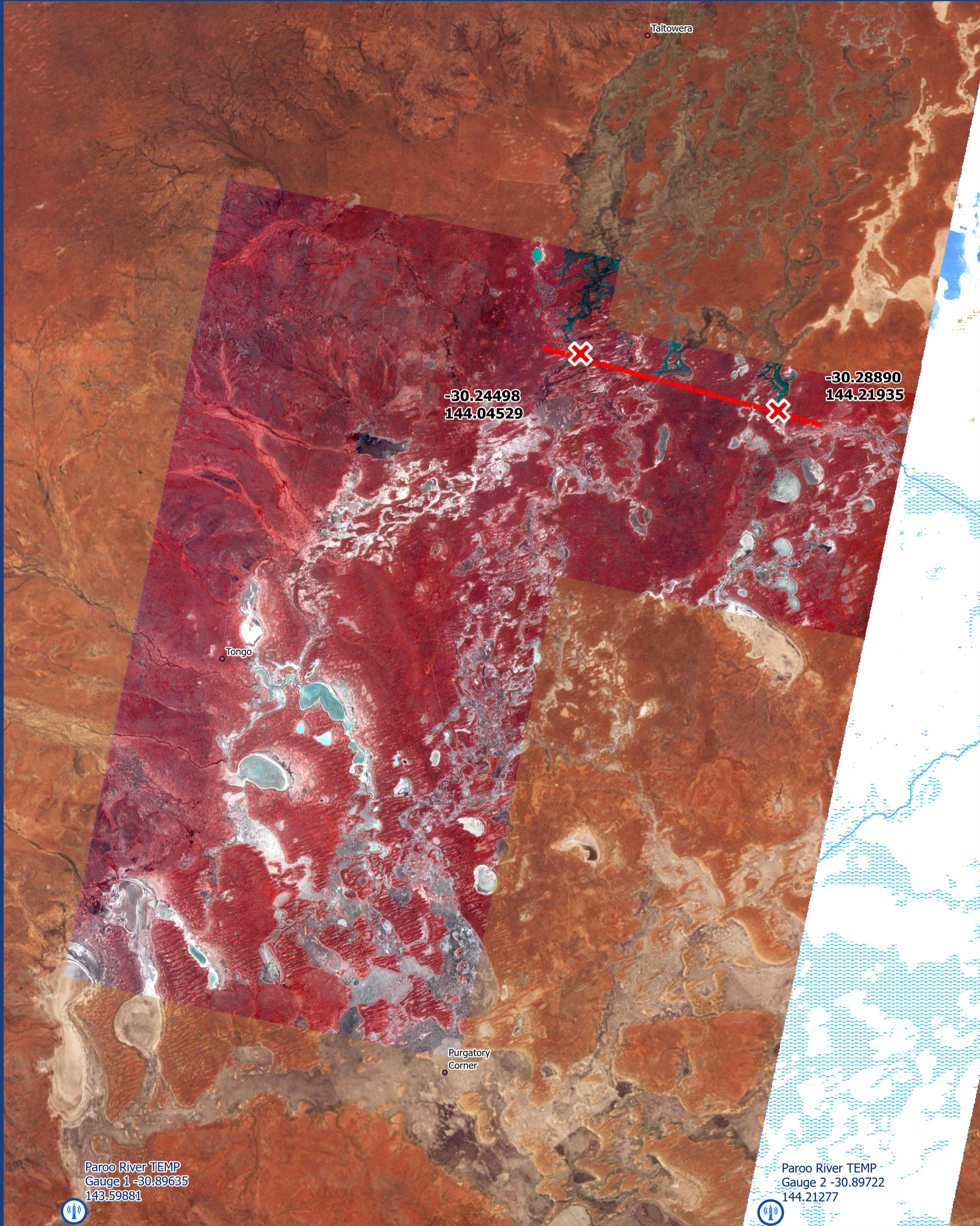
- Headwater cross section
- Headwater coordinate
- WaterNSW\_TempGauge

CC BY-NC-SA

0 25 50  
Kilometres

Projection: GCS WGS 1984  
Date Saved: 14/04/2025





Headwater coordinate



Headwater cross section



WaterNSW\_TempGauges