

# Daily Darling River Summary

Issue 6, Tuesday 15th April 2025

## KEY POINTS

- \* Paroo River at Wanaaring has dropped below the Major flood level of 4.00m and continues to fall slowly.
- \* Warrego River at Barringun has peaked (11/04/2025) and is falling. Further rises are possible with more upstream flows.
- \* Peak along Barwon River has passed Walgett and is approaching Brewarrina and Bourke where the river is rising slowly.
- \* Headwaters of the Paroo have reached approximately **144.01169 E, -30.28304 S** as at 14/04/2025.

**KEY** Rising ↑  
Steady →  
Falling ↓

As at 6am

River	Location	Type	Height (m)		Rise (cm)	Vol (ML/d)	Flood of Record	Predicted Height & Date	
Barwon	Collarenebri	Auto	4.893	↓	35.7	18022	<b>8.89m</b> <b>1976</b>	<b>PEAKED</b> Below Min	-
	Walgett	Auto	11.59	↓	8	57295	<b>13.84m</b> <b>1893</b>	<b>PEAKED</b> Min	-
	Brewarrina	Auto	4.94	↑	30	20752	<b>12.14m</b> <b>1893</b>	<b>6.4</b> Min	18/04/2025
Culgoa	Brenda	Auto	3.98	↑	4	3503	<b>6.30m</b> <b>1890</b>	<b>PEAKED</b> Below Min	-
	Weilmoringle	Auto	5.25	→	-	5945	<b>6.10m</b> <b>2011</b>	<b>5.2</b> Min	18/04/2025
	Kenebree	Auto	5.82	↑	1	12820	<b>7.5m</b> <b>1893</b>	<b>5.9</b> Mod	15/04/2025
Warrego	Barringun	Auto	4.63	↑	3	19943	<b>5.63m</b> <b>1956</b>	<b>4.7</b> Mod	16/04/2025
	Enngonia	Manual	2.57	↑	2	-	<b>3.05m</b> <b>1956</b>	<b>2.7</b> Mod	19/04/2025
	Fords Bridge Bywash	Auto	2.55	↑	9	1026	<b>3.21m</b> <b>1990</b>	<b>2.9</b> Mod	18/04/2025
Cuttaburra	Cuttaburra Channel at Turra	Auto	4.55	↓	8	43105	- -	- -	-
Paroo	Willara Crossing	Auto	2.72	↓	16	17305	- <b>2010</b>	<b>PEAKED</b> Min	-
	Wanaaring	Manual	4	↓	17	-	<b>4.88m</b> <b>1990</b>	<b>PEAKED</b> Maj	-
	Porters Crossing - REACTIVATING	Auto	-	→	-	-	- -	- -	-

# Daily Darling River Summary

Issue 6, Tuesday 15th April 2025

River	Location	Type	Height (m)		Rise (cm)	Vol (ML/d)	Flood of Record	Predicted Height & Date	
Darling	Bourke	Auto	8.01	↑	32	23282	<b>14.18m</b> <b>1976</b>	<b>9.5</b> Min	17/04/2025
	Louth	Auto	6.49	↑	36	16444	<b>13.94m</b> <b>1890</b>	- -	- -
	Tilpa	Auto	5.51	↑	44	11512	<b>13.35m</b> <b>1976</b>	- -	- -
	Trevallyn	Auto	6.012	↑	148	6980	- -	- -	- -
	Wilcannia	Auto	2.74	↑	74	3926	<b>11.59m</b> <b>1976</b>	- -	- -
	Nelia Gaari	Auto	-	→	-	-	- -	- -	- -
Talyawalka	Wilga (NPWS)	Property	-	→	-	-	- -	- -	- -

## ■ Data Sources

1. WaterNSW
2. Bureau of Meteorology

## ■ Requests for Assistance

NSW SES  
**132 500**

Agriculture & Animal Services Function Area (AASFA)  
**1800 814 647**

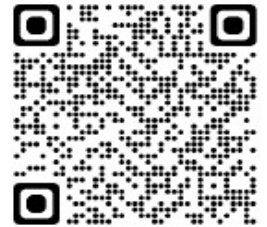
## Contact us

For more information, please contact Western Zone via:

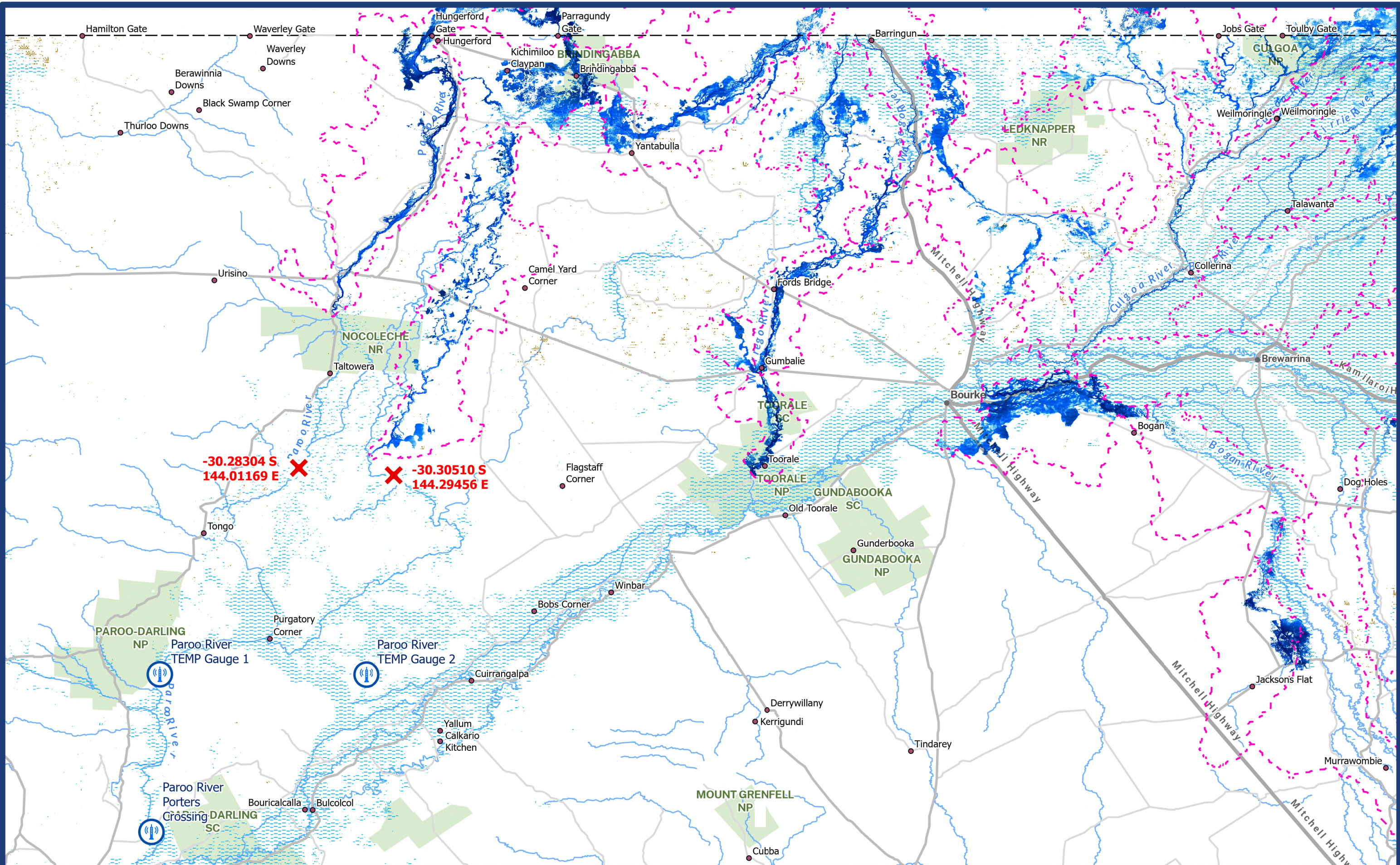
E: [wtz.ops@ses.nsw.gov.au](mailto:wtz.ops@ses.nsw.gov.au)

W: [www.ses.nsw.gov.au](http://www.ses.nsw.gov.au)

Access the latest warnings  
and information via  
[www.hazardwatch.gov.au](http://www.hazardwatch.gov.au)







NSW ICEYE - Release 12 (R13 still upcoming)  
Map 15 APRIL 2025 09:00am

The ICEYE data on the maps shows the cumulative flood extent over an extended time and is not indicative of current flood conditions.  
Note that we only have data for the areas inside the dashed pink outlines. Other areas may become available with future ICEYE releases.



WaterNSW\_TempGauge



Headwater coordinate

ICEYE Extents



Kilometres  
Projection: GCS WGS 1984  
Date Saved: 15/04/2025





