

Daily Darling River Summary

Issue 7, Wednesday 16th April 2025

KEY POINTS

- * Paroo River at Wanaaring has dropped below the Major flood level of 4.00m and continues to fall slowly. The river is currently at the Moderate flood level.
- * Warrego River at Barringun has peaked (11/04/2025) and is falling. Further rises are possible with more upstream flows.
- * Peak along Barwon River has passed Walgett and is approaching Brewarrina and Bourke where the river is rising slowly.
- * Headwaters of the Paroo have reached approximately 144.00405 E, -30.31101 S as at 16/04/2025.
- * The satellite image on page 3 shows the progression of the headwaters as they move downstream each day.

KEY	Rising	↑
	Steady	→
	Falling	↓

River	Location	Type	Height (m)		Rise (cm)	Vol (ML/d)	Flood of Record	Predicted Height & Date	
Barwon	Collarenebri	Auto	4.45	↓	44.3	16098	8.89m 1976	PEAKED Below Min	-
	Walgett	Auto	11.46	↓	13	52104	13.84m 1893	PEAKED Min	21/04/2025
	Brewarrina	Auto	5.24	↑	30	22073	12.14m 1893	6.4 Below Min	18/04/2025
Culgoa	Brenda	Auto	4.03	↑	5	3614	6.30m 1890	PEAKED Below Min	-
	Weilmoringle	Auto	5.24	↓	1	5932	6.10m 2011	5.2 Min	18/04/2025
	Kenebree	Auto	5.81	↓	1	12788	7.5m 1893	5.9 Mod	15/04/2025
Warrego	Barringun	Auto	4.59	↓	4	18912	5.63m 1956	4.7 Mod	16/04/2025
	Enngonia	Manual	2.58	↑	1	-	3.05m 1956	2.7 Mod	19/04/2025
	Fords Bridge Bywash	Auto	2.65	↑	10	1162	3.21m 1990	2.9 Mod	18/04/2025
Cuttaborra	Cuttaborra Channel at Turra	Auto	4.42	↓	21	37393	- -	- -	-
Paroo	Willara Crossing	Auto	2.57	↓	31	14417	4.34m 2010	PEAKED Min	-
	Wanaaring	Manual	3.97	↓	20	-	4.88m 1990	PEAKED Mod	-
	Porters Crossing - REACTIVATING	Auto	0.646	↓	-	-	- -	- -	-

Daily Darling River Summary

Issue 7, Wednesday 16th April 2025

River	Location	Type	Height (m)		Rise (cm)	Vol (ML/d)	Flood of Record	Predicted Height & Date	
Darling	Bourke	Auto	8.31	↑	62	24593	14.18m 1976	9.5 Min	17/04/2025
	Louth	Auto	6.82	↑	69	17657	13.94m 1890	- -	- -
	Tilpa	Auto	5.9	↑	83	12892	13.35m 1976	- -	- -
	Trevallyn	Auto	6.012	↑	148	6980	- -	- -	- -
	Wilcannia	Auto	3.37	↑	137	5615	11.59m 1976	- -	- -
	Nelia Gaari	Auto	-	➔	-	-	- -	- -	- -
Talyawalka	Wilga (NPWS)	Property	-	➔	-	-	- -	- -	- -

■ Data Sources

- 1. WaterNSW
- 2. Bureau of Meteorology

■ Requests for Assistance

NSW SES
132 500

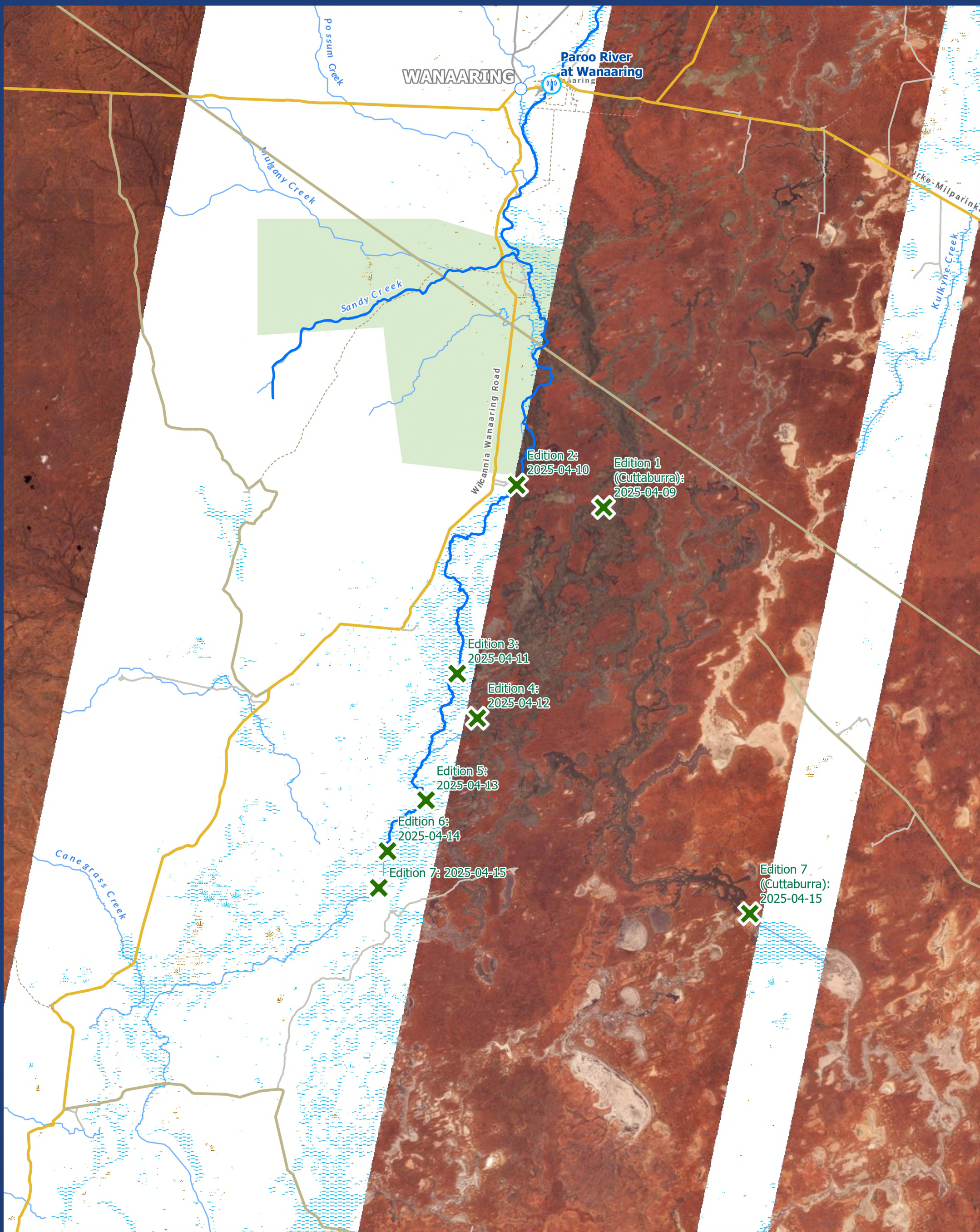
Agriculture & Animal Services Function Area (AASFA)
1800 814 647

Access the latest warnings
and information via
www.hazardwatch.gov.au



Contact us

For more information, please contact Western Zone via:
E: wtz.ops@ses.nsw.gov.au
W: www.ses.nsw.gov.au



Water NSW Temp Gauge



Paroo Flood Head



BOM River Gauge

