



Candidate Information

Contents

From the General Manager	4
History of the Shire	5
Services Available.....	7
Wilcannia	7
Menindee.....	7
Ivanhoe	8
White Cliffs.....	8
Statistics on the Shire.....	8
The Council Logo	9
Council's Community Strategic Plan	9
Our Vision.....	9
Our Core Values	10
Organisational Structure	10
Our workplaces	13
Our Expectations.....	13
Customer Service / Our Brand	14
Code of Conduct	14
Conflict of Interest	14
Secondary Employment	14
Award / Policies / Procedures.....	14
Hours of Work.....	15
Staff Uniforms	15
Probationary Period	15
Inductions	15
Salary System	16
Job Evaluation	16
Annual Staff Assessment.....	16
Pay.....	16
Higher Grade Pay	16
Superannuation	17

Completion of Timesheet	17
Pay Advice Slip	17
Pay Deductions	17
Overtime	17
Study Assistance	18
Work Health and Safety	18
Injury and Workers Compensation	18
Alcohol and other Drugs	18
Respectful Workplace	20
Smoking in the Workplace	20
Employee Assistance Program	20

From the General Manager

Thank you for expressing an interest in working with us here at Central Darling Shire Council.

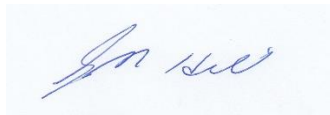
Our collective role is to assist in improving the lifestyle of the people of Central Darling Shire.

It is important to be aware that your primary commitment is – and always will be – to the community. Irrespective of the position that is held, everyone is a part of the Council team.

This information book has been prepared to provide you with information about Council, employment conditions and benefits that relate to working with us.

If you have any questions regarding the content of this booklet, please contact our HR Officer on (08) 8083 8815.

Again, thank you for expressing an interest in working with us and I look forward to hearing from you.

A handwritten signature in blue ink, appearing to read 'Greg Hill'.

Greg Hill
General Manager

History of the Shire



Australia has been inhabited by the Aboriginal people for some 40,000 years. Lake Mungo to the south of Wilcannia and Mutawintji to the north-west give evidence of long occupation. Because of this, the Aboriginal people have a unique place in our Australian society. The **Central Darling Shire** area around Wilcannia was held by the Barkindji tribe (from barka meaning a river). Many of the Aboriginal people living in Wilcannia today belong to the Barkindji tribe.

Captain Charles Sturt was the first European to map the Murrumbidgee River and the Murray River to its mouth in 1830. In 1835 Major Thomas Mitchell followed the Bogan and Darling Rivers down to Menindee. He named Mt Murchison on the Darling. Settlement commenced prior to 1850 along the Darling, but it was 1855 before the Central Darling runs were consolidated. Captain Francis Cadell's Steamer Albury entered the Darling on 27 January 1859 and reached Mt Murchison in 8 days. Later the name was changed to Wilcannia meaning 'a gap in the bank where flood waters escape'.

The township of **Wilcannia** was notified on 26 June 1866. In 1880 it had a population of 3000 with 13 hotels and was known as 'The Queen City of the West'. Wilcannia became one of the major ports of the Murray Darling system and the paddle steamer trade flourished for 70 years. In 1887 218 steamers and their barges unloaded stores weighing 36,170 tons, and 222 loaded wool and other produce weighing 26,552 tons at the port of Wilcannia. At one time there were 30 steamers loading or unloading. There were 90 steamers plying the Darling in 1890. The total distance from Wilcannia to Goolwa at the mouth of the Murray is 1110 river miles. Eventually rail and road transport killed the river boats and Wilcannia lost its former glory. Many fine buildings from the era remain in good condition making Wilcannia one of the best preserved historic towns in Australia.



The name '**White Cliffs**' seems to have come from the smudgy white cliffs easily seen by passengers travelling the road from the river port of Wilcannia and the Mt Brown gold fields. From the first there were problems with lack of water and extreme heat in summer. These conditions made for considerable hardship in the opal fields and led to the town's characteristic underground dwellings, not the first in Australia but the first on any opal field.



Ivanhoe was originally situated on a well-used route across flat, western New South Wales between Wilcannia and both Balranald and Booligal. George Williamson purchased the first land in the area between 1869 and 1873 and became a central figure in the town's development. He established a branch store with a liquor license in 1870. At that stage the store and a bark hut constituted the town. The Ivanhoe Hotel came into existence by 1872 and a Post Office opened on January 1, 1874.

Menindee has a history that is full of colour and characters. A quiet townshihp which sits between the Darling River and Lake Menindee, Menindee was 'discovered' by the aborigines of the Barkindji Tribe. Their fossilised skeletons remain in the dry sand dunes around the Menindee lakes and have provided some of the most prolific and consistently early remnants of human existence anywhere in the world. Thus far archaeologists have positive evidence of occupation dating back 26,000 years - not much younger than the now famous neighbouring site, Lake Mungo.



Menindee was the first town on the Darling River and it played an important role in NSW's pastoral, riverboat and rail history.

Major Thomas Mitchell, Edward John Eyre, Captain Charles Sturt and Burke and Wills all camped near Menindee.

Services Available

Wilcannia

- Post Office
- Services NSW
- Wilcannia Central School
- St Therese's Community School
- TAFE NSW Campus
- Health Services, including a hospital
- Pharmacy
- Wilcannia Cafe
- Wilcannia Golf Club, including golf course
- Police and Courthouse
- Community Hall
- Swimming Pool
- Wilcannia River Radio
- Wilcannia Outback Store / Supermarket
- Queens Hotel
- Recreation Oval, including bike pump track
- Broken Hill Bus Service

Menindee

- Post Office
- Services NSW
- Menindee Central School
- TAFE NSW Campus
- Health Services, including a hospital
- Pharmacy
- Police
- Community Hall
- Darling River Supermarket
- Menindee Café
- Redsands Takeaway
- Maidens Hotel
- Albermarle Hotel
- Auto Repairs
- Recreation Oval, Tennis Courts, Swimming Pool and bike pump track
- Childrens Centre (Day Care)



Ivanhoe

- Post Office
- Services NSW
- Police
- Ivanhoe Central School
- Ivanhoe PreSchool
- Community Hall
- Recreation Oval and Swimming Pool
- Outdoor Gym- and Bike Pump Track
- Ivanhoe Hotel
- Café and Mini Supermarket

White Cliffs

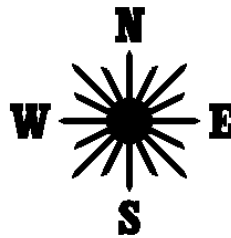
- Post Office
- White Cliffs Public School
- White Cliffs Hotel
- Health Services
- Recreation Oval and Swimming Pool
- Outback Store

Statistics on the Shire

Central Darling Shire Council is a rural shire in the Far West Region of New South Wales encompassing the communities of Wilcannia, Menindee, Ivanhoe, Tilpa, White Cliffs, Darnick, Sunset Strip, Copi Hollow and Mossiel.

Total Full Time Staff:	53
Shire Population (2016 Census):	1833
Principal Town:	Wilcannia
Longitude:	143°22'E
Latitude:	31°34'S
Population of Principal Town:	900
Height above Sea level:	75 metres
Area of Shire:	53,511 Km²
January Mean Minimum Temperature:	19.70 C
January Mean Maximum Temperature:	35.20 C
July Mean Minimum Temperature:	4.20 C
July Mean Maximum Temperature:	17.10 C
Average Annual Rainfall:	262mm

The Council Logo



Our Logo incorporates the geographical locations of the four (4) main townships in our Shire, each represented by a compass point.

Council's Community Strategic Plan

The Community Strategic Plan seeks to identify the various needs of the people living in and visiting the Central Darling Shire, it determines whether it is Council's responsibility to take an action to meet their needs and also recommend action plans which are designed to meet these needs.

Take a look at our Community Strategic Plan on our website.

From this, Council develops its Delivery Program and Operational Plan to identify our work and activities for our community each year.



Our Vision

Respecting our country, culture, people and river by building a better future for all generations.

Our Core Values

Through a collaborative approach and strong commitment, the values that will support and guide us in achieving our vision are:

- Ethical and responsible behaviour
- Harmony
- Working together
- Caring for individuals
- Diversity of opinion and respect for others
- Commitment to improved performance
- Achieving tangible results
- Commitment to do what we said we will do
- Energising leadership
- Customer service and contribution to community
- Innovation and continuous improvement



Organisational Structure

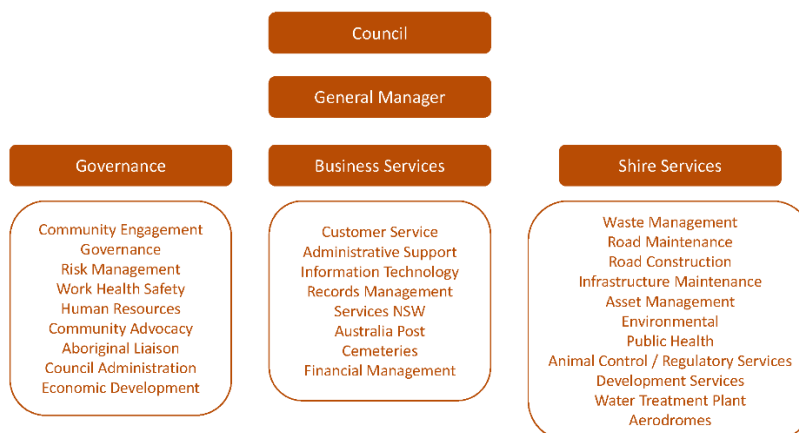
The Administrator is the head of the Council who regularly plans visits to our Shire and meets with community members on a regular basis.

Staff are under the leadership of the General Manager who is responsible for the planning and delivery of many different services and functions.

There are three (3) divisions within Council's structure.

May 2022

Organisational Structure



Shire Services Activities and Functions

- Water Supply
- Stores
- Plant and Fleet Management
- Sewer and Septic Infrastructure
- Water Filtration Plant
- Works Depots
- Town Works
- Bushfire and Emergency Management
- Sewer, Drainage, Water diagrams
- Wilcannia Weir
- Wilcannia Production Bore
- Construction Contract Management
- Road Design and Construction
- Bridges
- Town Cleaning/Maintenance
- Footpaths
- Kerb and Guttering
- Airstrips
- Public Amenities Cleaning
- Water Testing
- Onsite Sewerage Management Approvals
- Building Approvals
- Development Approvals
- Swimming Pool Management
- Mapping/Surveying
- Waste Management
- Building and Health Orders and Notices
- Cemeteries
- Planning/Zoning
- Animal Control
- Environment Protection
- Caravan Parks
- Council Housing
- Television Re-transmission
- Food Premises Approvals
- Playgrounds and Public Amenities



Business Services Activities and Functions

- Financial Management
- Payroll
- Superannuation
- Accounting
- Creditors
- Debtors
- Investments
- Insurance
- Administrative Support
- Council Support
- Records Management and Archives
- Rates Administration
- Computer Support
- Uniforms - Indoor Staff
- Land Title Information
- Wilcannia Post Office
- ServicesNSW Agency
- Trainlink Agency
- Community Services
- Rural Transaction Centres
- Ivanhoe Multi Service Outlet
- Public Halls
- Tourism
- Section 355 Committees of Council



Governance Activities and Functions

- Corporate Governance
- Community Engagement
- Human Resources
- Corporate Risk
- Work Health Safety
- Administrator/Council and Executive Support

Our workplaces

The primary location for our office staff is the Council Chambers located at 21 Reid Street, Wilcannia – Phone (08) 8083 8900.

We also have the following locations where our staff are located:

- Wilcannia Post Office
- Wilcannia Depot
- Menindee Rural Transaction Centre
- Menindee Depot
- Ivanhoe Multi Service Outlet (or MSO)
- Ivanhoe Depot
- White Cliffs Depot

We also have a number of staff who work remotely across Australia and who come into our offices on a regular basis to work and connect with staff.

Our Expectations

All staff are expected to:

- demonstrate a commitment to Council's Vision and Core Values; and
- act with the highest principles of professionalism, ethics, integrity and honesty. Dishonesty in any dealings reflects badly on Council and will not be tolerated. Vested interests, personal gain or personal bias can have no part in the performance of duties.
- Ensure that the requirements set out in Council's policies and procedures relating to security of information/privacy are followed at all times, that procedures are implemented to prevent the unlawful or willful damage or loss of assets.
- Raise any issues and/or concerns with the requirements of the Local Government State Award. Staff are not permitted to lobby or raise concerns with the Administrator.

Customer Service / Our Brand

The prime objective of the Council is to provide a service to the Community. This becomes the responsibility of every staff member because to the public, each employee is representing the Council image and brand. Whatever you do or say directly affects the public image of the Council, so staff are expected to ensure that the public image is a good one.

Code of Conduct

We operate under the Code of Conduct that has been issued by the Office of Local Government. The purpose of the Code is to set the minimum requirements of conduct for all Council staff in undertaking Council business. It is designed so that all staff understand the standards of conduct that are expected, and importantly, act in a way that enhances public confidence in the integrity of Local Government.

All staff are required to conduct themselves in a manner that does not bring the council or holders of civic office into disrepute.

Conflict of Interest

The Local Government Act 1993 and the Code of Conduct place significant obligations on all employees to disclose circumstances where our private interests come into conflict with our public responsibilities.

Where employees believe that there is a potential conflict, they are required to disclose this to the General Manager as soon as reasonably practicable.

Secondary Employment

We recognise that staff hold positions outside of their work with Central Darling Shire.

Where employees are considering any outside employment or contract work that relates to the business of Council, or that might conflict with your Council duties and are receiving remuneration, you are required to notify in writing and seek written approval of the General Manager in writing before commencing such work.

Award / Policies / Procedures

Your employment will be governed by the Local Government (State) Award, your employment contract and our organisational policies and procedures.



Hours of Work



The hours our main administration office is open to the public are 8:45am – 5pm, Monday – Friday.

Staff who work in the administration centres work from 8.45am to 5pm Monday to Friday with a 54-minute lunch break. This allows for the accrual of 1.75 hours per week for a Rostered Day Off (RDO) each month for fulltime staff.

Staff (both administration and outdoor) who work in the Engineering Department work a 9 day fortnight as follows:

- Week one – Monday to Friday 7.30am to 4.30pm with 30 minutes for lunch
- Week two – Monday to Thursday 7.30am to 4.00pm with a 30 minutes for lunch with a Rostered Day off Friday

Outdoor staff generally start between 7-8am and finish between 3-4pm, Monday-Friday with a 30 minute lunch break and an RDO each fortnight.

Post Office staff work a 9 day fortnight. Staff work between 8am and 5pm with a one hour lunch break. The RDO's are taken at alternative times to ensure that the Post Office remains open and accessible to the community.

Staff Uniforms

While not a requirement, Central Darling Shire Council does have a corporate uniform that staff are able to access.

Probationary Period

All staff are employed on a probationary basis for up to six months, depending upon the position held.

- Positions reflective of Grades 1 to 4 – three (3) months
- Positions reflective of Grades 5 and above – six (6) months

Inductions

All new staff are required to participate in an induction program, with the aim of assisting them to be successful in their role.

During your probation period, the employee will be taken through all areas that are critical to the person and their role.

This is an opportunity to ask as many questions as possible to ensure that you have the information that you require.

Salary System

Council's salary system is underpinned by evaluating all positions and assigning a Grade from our salary structure. Our Salary System has 22 grades, each containing 4 steps.

Progression through the steps is based on meeting the competencies for the relevant step as part of the Annual Staff Assessment.

Progression between each Grade is subject to an individual job evaluation undertaken by the HR Officer using the information contained in the approved position description.

Job Evaluation

Staff wishing to have their pay grade reviewed are required to submit their request in writing, including an updated position description and a completed Job Evaluation Form.

Upon receipt of the documents, the HR Officer will undertake the job evaluation process and present the outcomes to the General Manager. Any questions or concerns with the information provided will be discussed with the respective manager/director.

Annual Staff Assessment

Progression through the steps within the Salary System are subject to the completion of an Annual Staff Appraisal. This appraisal is undertaken in line with the requirements of the Local Government (State) Award.

The appraisal comprises an assessment of your competencies against those identified for the position.

Pay

Our pay week commences each Monday morning and goes for the entire week to conclude Sunday evening. The pay is paid directly into your nominated account every second Thursday.



Higher Grade Pay

There may be occasions when an employee is required to undertake duties at a high pay grade at the request of their Supervisor/Manager/Director. In these circumstances, the high pay grade will be applied in accordance with the requirements of the Award.

Superannuation

You have the choice to elect a superannuation fund. If you do not nominate a fund, you will have your superannuation paid into a Local Government Superannuation Accumulation Fund which we establish when you start employment with us.

Completion of Timesheet

All staff are required to complete a timesheet for all hours worked. At the end of the week, staff are required to total the hours worked and attach any leave forms for leave taken throughout the week. Timesheet are required to be submitted by 4pm Friday of each week.



Pay Advice Slip

Pay Advice Slips are emailed each fortnight to the employee's nominated email address.

Pay Deductions

There are many deductions that can be taken directly from your pay simply by completing an authorisation form. The deductions may include:

- Health funds
- Additional superannuation
- Union fees

Overtime

At times, staff may be required to work outside the agreed spread of hours for their position to meet the reasonable needs of the organisation. If this occurs, the employee may elect to be paid overtime rates or may take time in lieu on an hour for hour basis of those hours worked.

Overtime is not able to be worked without the prior authority of the relevant Director.

Study Assistance

We encourage staff in their efforts toward self-development. Council's goal is to assist employees to further their knowledge and skills, thereby improving the employee's confidence and overall value to the organisation.

For approved courses, Council will pay employees a contribution towards the cost of study. Any financial assistance provided is intended as a contribution rather than a reimbursement of costs.



Council's contribution towards the cost of study assistance will be reviewed annually. The amounts that shall be paid for the academic semesters will depend on the level of course undertaken.

Recommended study assistance contributions are as listed below.

All claims for assistance are conditional on satisfactory completion of each subject.

<u>TAFE</u>	Certificate & Advanced Certificate	Annual Fee \$300
		Per Semester \$150
<u>TAFE</u>	Associate Diploma/Diploma	Annual Fee \$700
		Per Semester \$350
<u>UNIVERSITY</u>	Post Graduate, Degree, Diploma or Certificate	Per Subject \$1,350
		Maximum \$8,000 per employee

Work Health and Safety

We are committed to providing and maintained work environments and systems of work that are safe and without undue risk to people's health.



Injury and Workers Compensation

All staff are covered by StateCover for any injury/illness sustained at work.

Alcohol and other Drugs

To safeguard the work health and safety of our staff, we require that no employee presents for work, resumes duties, or during work, ingest, inhale or be under the influence of alcohol or other drugs.

We also undertake random drug and alcohol testing of our staff. This is undertaken by our WHS and Risk Management Officer in accordance with our Drug and Alcohol Procedure.

Candidate Information – Version 1.0

Created: July 2023

Updated: N/A

Respectful Workplace

We are committed to providing a workplace free from discrimination, harassment and bullying for all staff.

We promote a culture of dignity and respect.

We encourage you to resolve any issues by yourself in the first instance by approaching the staff member and asking that the offending behavior stops.

We will not tolerate any form of discrimination, harassment, bullying, workplace violence or victimisation.

All incidents will be investigated and subject to the outcome, may lead to disciplinary action which can include termination of employment for serious or repeated breaches.



Smoking in the Workplace

Smoking is prohibited in all of our workplaces, buildings and amenities. Our Council vehicles and plant are considered workplaces and therefore smoking is not allowed in Council supplied vehicles and items of plant.

Employee Assistance Program

Council has in place an Employee Assistance Program that can assist you in the following areas.

The service is free of charge for employees and their immediate family.